

# Prospectus

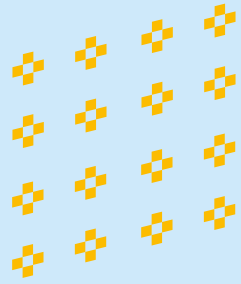
2020/21



**Longley Park**  
SIXTH FORM

[longleypark.ac.uk](http://longleypark.ac.uk)





# Welcome to PROJECT

At Longley Park, we do more than simply get you through exams – we help you define your unique goals. Whether you're aiming for university, or are ready to train for a career, it's time to start working on you.

# YOU



The best  
project you'll  
ever work on



# Student Welcome

**As you walk in through the modern Longley Park Sixth Form building, you will not only find excellent facilities and equipment for learning but will also be welcomed as a valuable addition to Longley's diverse, inclusive and welcoming learning environment. On top of that, you will be mentored by professional staff who take on your success as their project, work day in and day out to help you achieve and play a major role behind Longley's growing success.**

After reflecting over the valuable lessons I received, I know that here at Longley Park, you have the power to shape your own educational journey by taking on challenges that will take you one step closer to the person you want to become.

My advice? Always seek challenges, take on opportunities available to you and learn from your mistakes because there is always room for improvement.

Wishing you the best of luck and welcome to Longley Park Sixth Form!

**Blansh**  
Student at Longley Park

# Mo's Welcome

## WELCOME TO PROJECT YOU!

**Choosing where to study after GCSEs is a big decision. At Longley Park we understand that everyone has their own unique goals and it's our job to make sure that you achieve yours.**

That's why we talk about Project You – we help you to be the best possible version of yourself. You might be aiming for a place at a top university or planning to train for a career straight away. Whatever you want to achieve, we'll support you every step of the way. Project You starts now.

Exam results are important, and we'll make sure you get the best possible teaching to inspire you. But Project You is about more than exams. It's about broadening your horizons, learning new skills, finding out what your ambitions really are – and how to achieve them.

## A step up from school

As a Sixth Form, we're all about providing an amazing place for 16-19 year olds to study. It's a place to meet new friends from lots of different backgrounds, and to work

with people who share your passion for your chosen subjects.

Most importantly it's a place to take control of your future and make your own decisions. It's more independent than school, but with lots of support to help you do your very best.

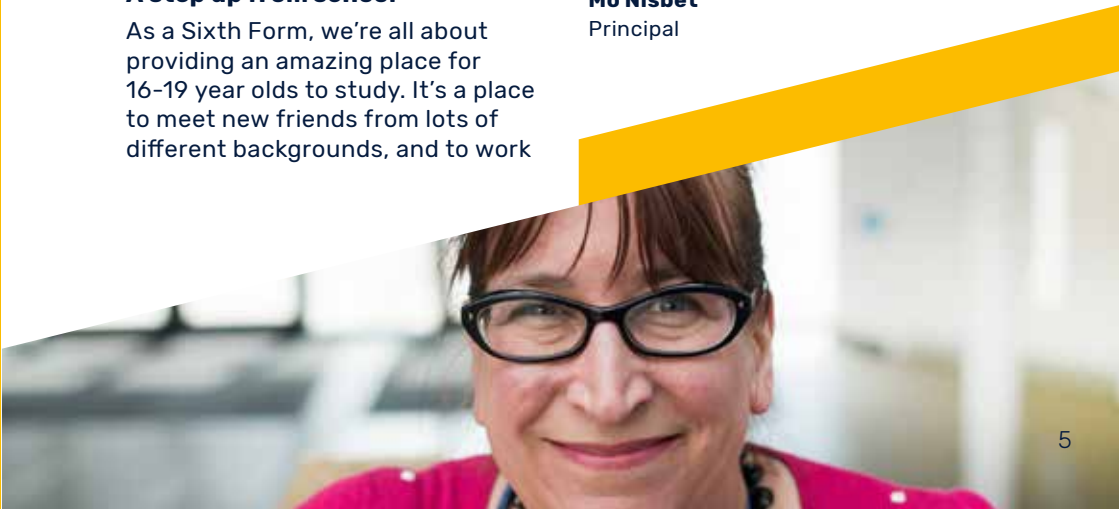
## Learn outside the classroom

Longley Park is an exciting mix of ideas, beliefs, cultures and languages – just like the world. It's a perfect example of the great ideas that can come to life when we listen to each other, share opinions and work together. We'd love you to join us.

This guide includes details of our courses. If you like what you see and want more information then visit our website, come along to an open event or give us a ring to arrange a visit and take your first step in planning your future.

We really look forward to meeting you!

**Mo Nisbet**  
Principal



# Why study with us?

## Our Results

- 98% Advanced Level Pass Rate overall
- 210 passes at A\* and Distinction\*
- Over 85% of students attending university

## Our Key Values

- Support
- Results
- Diversity

## OPEN DAYS

Saturday 19th October  
10am-2pm

Saturday 18th January  
10am-2pm

## What our students say about us...

**"The support from staff was phenomenal and I enjoyed my experience at Longley greatly."**

Daniel - A Level student

"I loved my courses, the teachers were all excellent in helping me to achieve the grades I needed for university."

Emily - A Level student

"Longley Park has really made me realise my potential, it is a calming, safe environment which provided many opportunities for me."

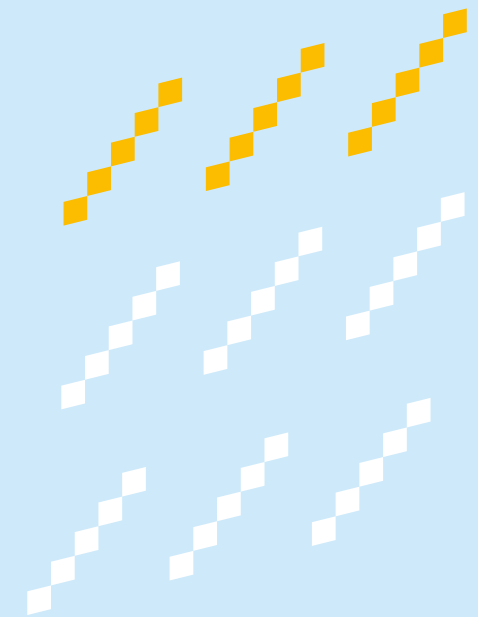
Jodie - A Level student

## What Ofsted say about us...

"Teachers have high expectations of students and teaching, learning and assessment are now consistently good."

**"There is a strong culture of valuing the individual; students respect each other and their teachers. Their behaviour is exemplary."**

**"Leaders and managers have been successful in developing a culture of high aspirations and achievement throughout the college."**



# Project you starts now.

# Academic Tutorial Programme

**To make Project You a success, you will work closely with an Academic Tutor who will guide and support you in your studies.**

## Support

Your Tutor will assist you throughout your journey, including barriers to your learning like stress, attendance and managing your workload. Regular one-to-one support will help you track your grades and develop a learning plan to maximise your potential.

## Engagement

The Student Achievement team oversees our engagement programme. We invite speakers, organise conferences, facilitate Q&A panels and run national and international trips, all to help you develop wider skills and cultural awareness. Recent trips include New York, Berlin and London.

## Progression

Our expectation is that all students progress to meaningful destinations. Whether this is university, employment or apprenticeship, students receive bespoke guidance in application processes such as UCAS. This includes writing personal statements and making course choices. We also work closely with Sheffield Futures to provide students with further advice.

## Academic Tutorial Sessions

- We have a strong focus on equality and diversity. We encourage debate and discussion on topics such as LGBT, health and wellbeing and British values.
- We have excellent links with universities, with regular guest talks, interactive sessions and open day opportunities.
- We develop your confidence in writing CVs, applying for jobs, preparing for interviews and boosting self-esteem.
- We have individual one-to-one meetings, focusing on specific needs to help you achieve your goals.

# Wider Opportunities

**Project You is about more than just academic success. It's about exploring new opportunities and developing key skills which help you stand out from the crowd.**

## High Achievers

Your opportunity to take part in university and national mentoring schemes and build a pathway to Russell Group and Oxbridge Universities.

## Duke of Edinburgh

Duke of Edinburgh is a great way to meet new people, gain voluntary experience, develop key life skills and strengthen your progression application through the award.

## Volunteering

We will help you to find relevant opportunities to gain experience and skills, enabling you to access careers. This might be in areas including sport, health and science. You will find out more about the different opportunities available at our volunteering fair.

## Student Council

Our Student Council represent the student body to influence positive changes at Longley Park. Recent successful proposals are gender neutral toilets and the multi-faith contemplation space.

## Debating Society

A great way to develop your confidence and skills through research and verbal reasoning, as well as public speaking – crucial to success.

## Community

It's important to understand the make up of the Longley Park community and the challenges we all face in the modern world.

## Student and Brand Ambassadors

This is open to all students and is a fantastic way to earn money alongside your studies. Ambassadors have a very important role at Longley Park and are positive role models to current and prospective students, in the local community and online.

# UK Career Ready Programme

**Longley Park is the only provider in the area to be a part of the prestigious UK Career Ready programme. This is an exciting scheme designed to give students studying a wide range of advanced level courses extra experience with local employers and businesses in order to help with their future careers.**

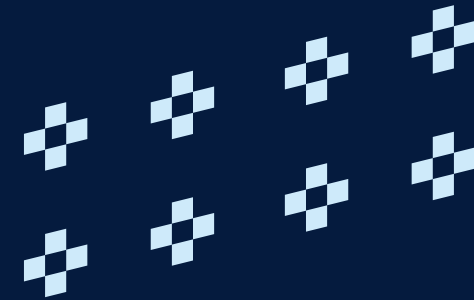
Our graduates from the scheme have secured places at some of the UK's top universities, as well as careers with prestigious companies.

**We offer programmes in the following areas:**

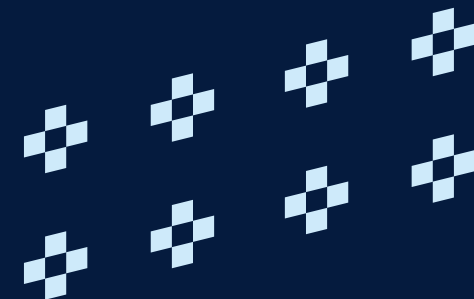
- Business and Finance
- Creative and Digital Arts and Media
- STEM subjects (Science, Technology, Engineering and Mathematics)

If you are following any advanced level courses related to these areas, you will be able to apply for the programme. It is a competitive application process and as the programme is supported by a wide network of national and local businesses and entrepreneurs then you will need to demonstrate a real drive to succeed.

You will get more information about Career Ready when you arrive at Longley Park through your advanced level courses.



**We're not here to hold your hand. But we'll support you every step of the way.**



# Learning Support

**Here at Longley Park Sixth Form, we have an experienced and dedicated learning support team that treats every student as an individual. Meaning you get the support you need.**

**We can support students who have a range of needs, including:**

- Dyslexia
- Dyspraxia
- Autism or Asperger Syndrome
- ADHD
- Learning difficulties or disabilities
- Sensory impairments
- Physical difficulties
- Medical conditions

Our team will work with you to find your individual strengths and discuss any parts of your sixth form experience that you might find difficult. We will provide you with the suitable support to help you excel and meet the demands of your chosen course. This might include support in the classroom or getting around the building, individual study sessions or access to drop-in sessions.

If you have an EHC Plan, you will be supported through transition to us. Support will be planned with you, your parents/carer and any other relevant professionals. You will be supported to achieve the agreed outcomes on your EHC Plan alongside your academic progress.

We have more details of the specific support you are entitled to in our Local Offer. If you would like to find out more about the support we can offer, please contact the Learning

**Support Team on:**

**Tel:** 0114 262 5762 or 0114 262 5781

**Email:** lauren.kellar@longleypark.ac.uk

**“I’ve had lots of help from the support team, thanks to them my spelling and grammar has improved and I’ve been able to grow massively as a person”**

# Financial Support

**We’ll do all we can to support you throughout your time here. This may involve working to identify any barriers to learning and providing you with the best support to help you overcome them.**

**Making sure you know about the financial support available to you will help get you off on the right foot.**

**Free for all students:**

- Your courses
- Textbooks
- Specialist equipment
- If you’re aged 16–18, in full-time education and living in South Yorkshire, you’re entitled to a student travel pass

**You could be entitled to financial support:**

**Longley Park Guaranteed Bursary**

If you’re aged 16–18 and currently receiving Income Support/Universal Credit, Personal Independence Payment and Employment Support Allowance, are in care or are leaving care, you could be eligible for a bursary of up to £1,200 per year.

**Longley Park Bursary Fund**

If your household income is less than £16,190, you could be eligible for financial support from the Bursary Fund to help with:

- Travel
- Printing costs
- Trips
- Emergency situations

**Further Education Free Meals**

You may be entitled to free meals, you can apply via the Bursary Fund application form.

**Care to Learn**

If you’re a young parent (aged under 20) you can apply for Care to Learn for help with your childcare costs.

You will receive a guide to the financial support available at Longley Park in your Student Finance Pack that will be sent out to you before you enrol.

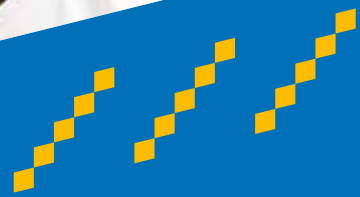
**Any queries?**

You’ll find the Student Finance Office in the Plaza.

**Tel:** 0114 262 5793 or 0114 262 5794

**Email:**

[vbark@brigantiatrust.net](mailto:vbark@brigantiatrust.net)



## Our Wellbeing Space

**At Longley Park, we have a dedicated Wellbeing Space where you can access wellbeing support from our specialist team whenever you need it. In this space, you can access the drop-in service, 1-1 support sessions and if needed, be referred for further support with a counsellor or therapist.**

### **You might use this space if...**

- You would like support with the emotional side of adjusting to sixth form life
- There are issues which are affecting your studies

- Things are happening in your life outside of Longley Park and you would like to learn some strategies to deal with them
- You are dealing with a specific mental health issue such as anxiety or depression
- You're having a bad day and would just like someone to talk to. We all need someone to talk to sometimes.

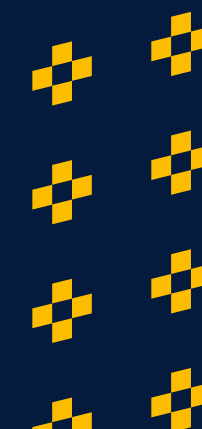
It is normal and natural to experience things in our lives which mean we need some extra support.

Feeling healthy and happy at Longley Park is integral to your success in your studies.

The Wellbeing Space is in room G05 towards the bottom of the Art Corridor on the ground floor.



**Dream big.  
Aim high.  
Reach further.**





# Find the right course for you

## A Levels

A Levels are Level 3 qualifications and are assessed by examinations, so it is important that you are confident in academic study. You will need 5 GCSEs at grade 4 (C) or above to study A Levels. You will usually need a grade 4 (C) in English and Maths. You will normally choose three subjects to study at A Level.

- Architecture, Interior and Product Design
- Art and Design - Fine Art
- Biology
- Business Studies
- Chemistry
- Economics
- English Language
- English Literature
- Geography
- Government and Politics
- History
- Mathematics
- Mathematics - Further Mathematics
- Media Studies
- Photography
- Physics
- Psychology
- Religious Studies
- Sociology

## BTEC Level 3 Extended Certificates, Diplomas, Certificates

Like A Levels, you will need 5 GCSEs at grade 4 (C) or above. You will usually need a grade 4 (C) in English and Maths. You will normally take other A Levels or BTECs alongside.

- Applied Human Biology
- Applied Psychology
- Applied Science
- Business
- Children and Young people, Care and Education
- Computing
- Core Maths
- Criminology
- Engineering
- Financial Studies
- Health and Social Care
- Information Technology
- Law
- Sports Development, Coaching and Fitness

## Level 3 Extended Diplomas, Diplomas: BTEC, CACHE, UAL

These are vocational courses that take up the whole of your timetable. Each Extended Diploma is the equivalent of 3 A Levels and can be used for university entry as well as for job applications. You will need 4 GCSEs at grade 4 (C) or above to study at Level 3. You will usually need a grade 4 (C) in English and Maths. There is a strong emphasis on coursework with some external testing. These are graded as Pass, Merit, Distinction and Distinction\*.

- Applied Science
- Art and Design (UAL)
- Business
- Childcare and Education (CACHE)
- Creative Media Production and Technology
- Games Design
- Health and Social Care
- Information Technology
- Sports Development, Coaching and Fitness

## Level 2 Diplomas, Certificates: BTEC, CACHE, CERTA, UAL, OCR

These Level 2 courses are equal to four GCSE grades. You will need at least 2 GCSEs at grade 3 (D) including English and Maths to study at Level 2. Each of the Diplomas will take up most of the time on your timetable and will have a strong emphasis on coursework.

- Applied Science
- Art and Design - Visual Arts and Media
- Business Studies
- Business Workskills
- Health and Social Care

- Information and Creative Technology
- Sport
- Working in Early Years and Primary School Setting

## Level 1 Diplomas: Pathways to Success, UAL

These courses take up most of the time on your timetable and will give you a good grounding for further study or work. To study at Level 1 you will need GCSEs at grade 2 (E) or grade 1 (F). There is a strong emphasis on coursework and developing important skills with numbers, communication and IT.

- Art, Design and Media - Visual Arts and Creative Media
- Health and Social Care
- IT and Business (Vocational Pathway)
- Vocational Studies

## English, Maths and Science GCSEs, ESOL and Functional Skills

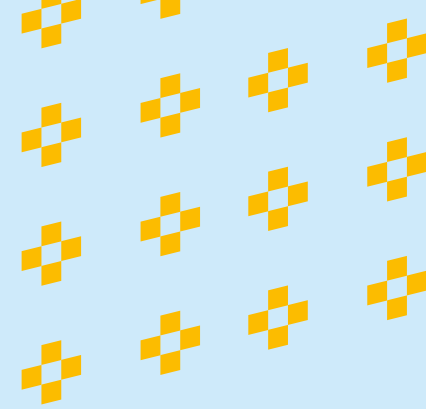
You will need to take Maths or English if you do not already have a GCSE grade 4 (C). You will also need a grade 4 (C) in GCSE Science for certain career routes.

Although you will be familiar with these courses, they will be very different at Longley Park. Our aim is to get you the vital passport qualifications in English, Maths and Science which are so important to employers and universities. You might take a GCSE in one or two years or you might work towards this by taking other qualifications along the way.

- Biology
- English
- Mathematics

# Find the right course for you

These are examples only. Your actual programme of study will be agreed with us at enrolment.



### LEVEL 3 PLUS

A Level	OR	BTEC Extended Diploma or CACHE Diploma Level 3	At least 5 grade 7-9 (As/A*s) For A Level, you will usually need at least a grade 4/C in English Language and Maths
A Level			
A Level			
A Level   Extended Certificate			
A Level   Extended Certificate		A Level   Extended Certificate	

### LEVEL 3

A Level	OR	BTEC Extended Diploma or CACHE Diploma Level 3	At least 5 Grade 4/Cs Non-GCSE qualifications like BTEC Level 2 in a related subject can count towards this total but we will also look at your overall academic profile. For A Level, you will usually need at least a grade 4/C in English Language and Maths
A Level			
A Level   Extended Certificate			
GCSE or Equivalent English, Maths or Science			
GCSE or Equivalent English, Maths or Science		GCSE or Equivalent English, Maths or Science	

YOUR LIKELY GCSE GRADES

### LEVEL 3

BTEC Extended Diploma or CACHE Diploma Level 3	GCSE or Equivalent English, Maths or Science	4 Grade 4/Cs Non - GCSE qualifications like BTEC Level 2 in a related subject can count towards this total but we will also look at your overall academic profile
--	--	--

### LEVEL 2

BTEC Level 2 Certificate or CACHE Diploma Level 2	OR	BTEC Level 2 Certificate or CACHE Diploma Level 2	At least 2 grade 3/Ds, up to 2 Grade 4/Cs You will normally need a grade D/3 in English Language and Maths
Functional Skills Qualifications e.g. English or Maths		GCSE or Equivalent English, Maths or Science	

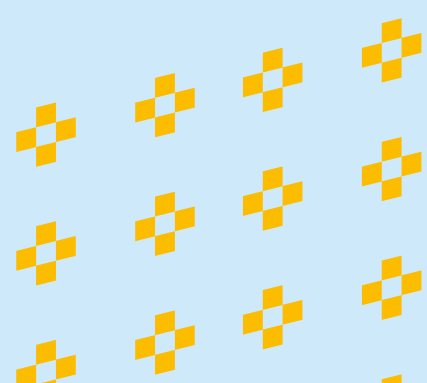
### LEVEL 1 PLUS

Level 1 Pathways	GCSE or Equivalent English, Maths or Science	Grade 3/D in English Language or Maths, mostly 2/Es
------------------	--	---

### LEVEL 1

Level 1 Pathways	Functional Skills Qualifications e.g. English or Maths	Mostly Grade 2/Es and 1/Fs and some other grades
------------------	--	--

YOUR LIKELY GCSE GRADES



# How to apply

**If your school is using Sheffield Progress you can use this to apply to Longley Park. Your school will work with you to take you through this process.**

**Alternatively, you can apply directly through the Longley Park website [www.longleypark.ac.uk](http://www.longleypark.ac.uk)**

## **Advisory interviews and getting started**

Once we have your application we'll arrange an advisory interview at Longley Park. This is so we can discuss what courses would be right for you.

We will look at your career interests, and plans for further study alongside how you have been doing at school. If you have questions about courses or about us, we'll answer them.

At the end of the process, we record the courses that you're interested in. Parents and guardians are very welcome at the interviews. In the summer, we'll send you and your parents more information about starting at Longley Park. This will include details of your enrolment appointment.

# Contents

**Business 23**

**Childcare 33**

**Creative Arts & Media 39**

**English 51**

**Health & Social Care 55**

**Humanities 63**

**Information Technology & Computing 73**

**Law 79**

**Maths 83**

**Science 89**

**Sport 99**

**GCSEs, Functional Skills & ESOL 105**

Full course information is available on our website at [longleypark.ac.uk](http://longleypark.ac.uk)

Courses are subject to approval by awarding bodies and therefore are subject to change. Our course offer may vary depending on number of applications received.

If you require this prospectus in a different format, for example in large text or braille, please contact us on **0114 262 5757**.

# Business

A Business qualification is highly desired by many employers as these qualifications will give you the skills and knowledge to be successful either to progress on to industry or to university. You have the opportunity to gain an interesting insight into the ever changing world of businesses and an understanding of how you can be a part of the growth of this field. As a Business student, you will also get the fantastic opportunity to be part of the Career Ready programme. Turn to page 10 for more information.

## James

Curriculum Leader

## Careers and progression

- Higher Education
- Management training courses
- Accountant
- Business
- Banking
- Retail
- Management

“Through the career talks, university visits and opportunities for voluntary work I realised the path I would like to go down”

# Business Studies

## A LEVEL - 2 YEARS

Entry Requirements: 5 GCSEs at grade 4-9 (A\*-C) including English + Maths

### What will I study?

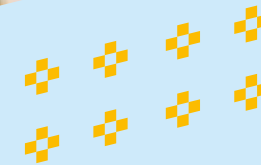
You will learn about what businesses do and how they do it, what factors are likely to make businesses successful, and practical information about the legal and financial requirements of the business world. In the first year you will look at how to plan and finance a business and techniques for successful management. In the second year you will study strategies for business success, the environment in which businesses operate and how they manage change.

### How will I be assessed?

Written examinations.

### What can I do next?

A Level Business Studies can provide a stepping stone into another field, perhaps onto a totally unrelated course. If you want to specialise, you could choose further study in business studies, marketing or accounting. The skills and knowledge developed by the course are highly valued by employers, and would be useful for progression to management training courses in banking, other financial institutions and retailing.



# Economics

## A LEVEL - 2 YEARS

Entry Requirements: 5 GCSEs at grade 4-9 (A\*-C) including English + Maths

### What will I study?

Economics is the study of the way society organises, produces, distributes, regulates and consumes resources. It covers areas such as employment, inflation, interest rates, currency exchange rates, and the way in which the government and other regulatory bodies manage and run the economy. In the first year you will study how competitive markets work and why they fail and will investigate how the economy is managed. In the second year you will study Business Economics and Economic Efficiency and the Global Economy.

### How will I be assessed?

Written examinations.

### What can I do next?

A Level Economics provides an excellent background for further study and careers in a wide range of areas. If you want to specialise there is a wide choice of Higher Education courses in economics and business related subjects.





# Financial Studies

## LEVEL 3 DIPLOMA 2 YEARS

Entry Requirements: 4 GCSEs at grade 4-9 (A\*-C) including English + Maths

### What will I study?

This London Institute of Banking and Finance qualification has been developed with the input of leading firms from the financial sector to ensure it gives you the essential knowledge and skills that companies are looking for. You will look at a range of topics such as how to investigate business financial performance by constructing profit and loss accounts, balance sheets and using ratio analysis to measure success.

### How will I be assessed?

Examinations + assignments.

### What can I do next?

You can advance onto university courses in accounting, finance or a related subject. Alternatively, the transferable skills gained throughout the course can make you very employable in a number of different business areas.

# Business

## BTEC LEVEL 3 EXTENDED CERTIFICATE - 2 YEARS

Entry Requirements: 4 GCSEs at grade 4-9 (A\*-C) including English + Maths.

### What will I study?

You will study different types of businesses and how they operate. This includes developing a marketing campaign, personal and business finance, recruitment and selection process and investigating customer service.

### How will I be assessed?

Examinations + assignments

### What can I do next?

A variety of options are available to you following study of business. The skills and knowledge developed by the course would be useful for progression to management training courses in banking, other financial institutions and retailing. If you want to go on to higher education there are degree courses available in business studies, marketing and accounting.



# Business

## **BTEC LEVEL 3 EXTENDED DIPLOMA - 2 YEARS**

Entry Requirements: 4 GCSEs at grade 4-9 (A\*-C) including English + Maths

### **What will I study?**

You will study different types of businesses and how they operate. This will include developing a marketing campaign and digital marketing, finance, principles of management and decision making, managing an event, customer service, human resources and international business.

### **How will I be assessed?**

Examinations + assignments.

### **What can I do next?**

A variety of options are available to you following study of business. The skills and knowledge developed by the course would be useful for progression to management training courses in banking, other financial institutions and retailing. If you want to go on to higher education there are degree courses available in business studies, marketing and accounting.



# Business Studies

## **BTEC LEVEL 2 CERTIFICATE - 1 YEAR**

Entry Requirements: GCSE at grade 3 (D) in English + Maths plus 2 other GCSEs at grade 4 (C)

### **What will I study?**

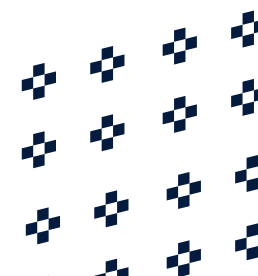
You will gain a good knowledge of business in general with a particular focus on key areas such as selling skills and entrepreneurial skills. The course covers different types of businesses, how to provide excellent customer service and what is involved in running a business. Projects and assignments are based on realistic workplace situations so you get a real insight into the kind of jobs and career routes that are available. In addition to the main programme, you will complete a BTEC Workskills qualification.

### **How will I be assessed?**

Examinations + assignments.

### **What can I do next?**

Students from this course have gone on to study BTEC qualifications in Business and Business Finance at Level 3 or a combination of A Levels and BTEC Subsidiary Diplomas. Many of them have then gone on to university to develop the skills to secure a job in industry or start up their own business.



# Business Workskills

## **BTEC LEVEL 2 CERTIFICATE - 1 YEAR**

Entry Requirements: GCSE at grade 3 (D) in English + Maths plus 2 other GCSEs at grade 4 (C)

### **What will I study?**

You will gain a good knowledge of general skills needed to work within a business with a particular focus on key areas such as working in an office environment and providing administration support to client and customers. The course covers different types of business roles and skills needed within an everyday office. You will develop employability skills and knowledge to allow you to work within different types of business. You will be expected to develop your skills within a one day placement in an office environment.

### **How will I be assessed?**

Assignments.

### **What can I do next?**

Students from this course could go on to study BTEC qualifications in Business. Many of them have then gone on to secure a job in industry or start up their own business or work within a business degree courses available in business studies, marketing and accounting.



# IT and Business (Vocational Pathway)

## **LEVEL 1 DIPLOMA - 1 YEAR**

Entry Requirements: 2 GCSEs at grade 2 (E) and 1 GCSE at grade 1 (F)  
Students without GCSEs will be asked to complete a diagnostic assessment

### **What will I study?**

You will find out about opportunities for work in the IT and Business industry and develop transferable skills, attributes and behaviours needed for learners to progress to further study and ultimately to employment. This course is all about improving your confidence and personal skills. It is a personalised learning programme which means that it is tailored to what you need in order to progress on to further training, employment or study.

### **How will I be assessed?**

Assignments, practical observations, logs, diaries + verbal presentations.

### **What can I do next?**

Successful students may progress to a Level 2 course in a related subject.







# Childcare and Education

We have high expectations for all of our students and provide a stimulating learning environment that blends practical skills with theory. We will help you achieve the best grades and will work closely with you to ensure you fulfil your potential. You will have the opportunity to attend different placements in order to build your practical skills and apply the lesson based theory. All of our recent Year 2 leavers have left Longley Park either with a place at university or with the offer of paid employment from their placement providers. A positive outcome for all!

**Maxine**  
Curriculum Leader

## Careers and Destinations

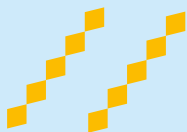
- Higher Education and further study
- Early Years Educators
- Practitioner in day nurseries and nursery schools
- Practitioner in reception classes in primary schools
- Pre-school worker and Nanny
- Teaching Assistant



# Childcare & Education

## CACHE LEVEL 3 - 2 YEARS

Entry Requirements: 4 GCSEs at grade 4-9 (A\*-C) including English + Maths



### What will I study?

Completing this qualification will show that you have been trained to the highest of standards, equipping you with the best early years training available. This qualification is now the must-have qualification and leads to a licence to practise and the status of being an Early Years Educator. It will enable you to work with children from birth to 5 years and gain knowledge of children aged 5 to 7 years. You will also have the opportunity to gain additional qualifications such as Paediatric First Aid. This is a work-related course so work placements are a key part of your study. You will take part in placements working with children of different ages in a variety of settings for two days per week as well as longer block placements during the year.

### How will I be assessed?

Assignments, portfolio tasks, case studies, external controlled assessments, reflective diaries + observations.

### What can I do next?

Upon achievement of this qualification learners will be able to enter the workforce as Early Years Educators or access Higher Education. Job roles in the statutory, voluntary or private sectors include, early year's practitioner in day nurseries, nursery schools, and in primary schools, pre-school worker, community nursery nurses and nanny.

# Children & Young People: Care and Education

## LEVEL 3 DIPLOMA - 2 YEARS

Entry Requirements: 4 GCSEs at grade 4-9 (A\*-C) preferably including English + Maths

### What will I study?

You will study 2 different pathways:

#### Supporting Teaching and Learning (The Education Pathway)

You will cover units focussing on supporting children and young people in schools as a teaching assistant.

#### Children and Young people's workforce (Social Care)

You will complete different units to understand how to work with children and young people in social care.

### How will I be assessed?

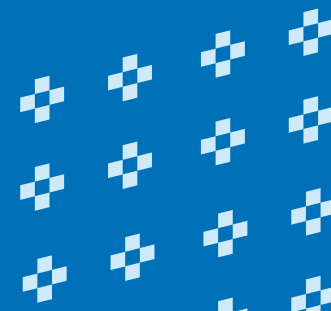
Observation, portfolio, written assignments + tasks. 400 hours of placement over 2 years.

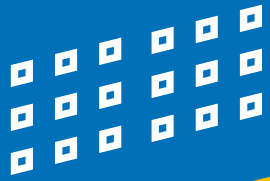
### Other study options

You can study this course with another A Level or single BTEC where you do not have to study additional GCSE English and Maths.

### What can I do next?

Students will be able to progress to Foundation Degrees if studied with another Level 3 course or employment.





# Working in Early Years and Primary School Settings

## CACHE LEVEL 2 - 1 YEAR

Entry Requirements: GCSE at grade 3 (D) in English + Maths plus 2 other GCSEs at grade 4 (C)

### What will I study?

This qualification has been designed to support learners as they develop their knowledge, understanding and skills when caring for and supporting the learning and development of children aged 0 to 11 years 11 months. You will learn about children at different stages in their growth and development, how to care for and educate them and how to work with parents, carers and other professionals. This includes communication, positive behaviour, safeguarding and welfare, health and safety and creating positive environments for children and young people. This is a work-related course so work placements are a key part of your study. You will take part in placements working with children of different ages in a variety of settings.

### How will I be assessed?

Assessment will be through assignments, external short answer examination and you will also be assessed on your work placement.

### What can I do next?

The Certificate trains you to work in a job as an assistant in settings such as nursery assistant, crèche worker, childminder assistant. Students from this course have also gone on to study the CACHE Level 3 Diploma in Childcare & Education / Early Years Educator, Supporting Teaching and Learning, Children and Young people's Workforce and Health & Social Care.





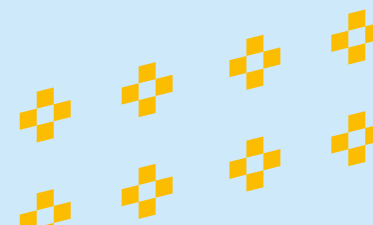
# Creative Arts & Media

I am always amazed by the high standard of creative work our students produce. Our ethos is to help you become more independent and confident when expressing your creativity. There are some amazing opportunities for you to get involved in. Previous years have seen our students exhibit their work in London, taking part in live projects to enhance the local environment and produce professional video work for clients. We'll treat you as an adult and expect you to behave as professionals working in the creative industry. We'll help you to achieve the best grades. In return, we expect excellent attendance and punctuality and the willingness to engage in new and exciting ways of working.

**Rob**  
Curriculum Leader

## Careers and Destinations

- Higher Education
- Artist
- Curator
- Photographer
- Architect
- Interior Designer
- Graphic Designer
- Journalist/Public Relations
- TV Producer
- Film Maker



# Architecture, Interior & Product Design - 3D Design

## A LEVEL - 2 YEARS

Entry Requirements: 5 GCSEs at grade 4-9 (A\*-C) including English + Maths.

### What will I study?

Throughout the course you will explore a wide range of fundamental design skills providing you with the tools needed to be in control of your own design future. The course focuses on three main areas of design (Architecture, Interior and Product Design) however there are many other areas that you may wish to explore throughout the course. Throughout the course, you will have opportunities to work alongside professional designers to give you a greater understanding of the creative industries.

### How will I be assessed?

Examinations + assignments.

### What can I do next?

There is a large range of associated courses running at universities and colleges around the country, covering specialisms such as product design, interior design and architecture.

# Art & Design – Fine Art

## A LEVEL - 2 YEARS

Entry Requirements: 5 GCSEs at grade 4-9 (A\*-C) including English + Maths

### What will I study?

The course will introduce you to new concepts and ways of working within art and will allow you to explore and gain confidence to express your own ideas. The emphasis is on practical work and the development of your own portfolio. You will also learn about the role art has played in history and in society today through visits to galleries, working with practising artists and your own independent research. Throughout the course, you will have opportunities to work alongside professional artists and designers to give you a greater understanding of the creative industries.

### How will I be assessed?

Examinations + assignments.

### What can I do next?

A Level Art and Design is widely recognised for developing an enquiring and critical mind as well as developing creative and technical potential, and is a useful qualification for applying for further study in a wide range of areas. You may wish to use your portfolio to support applications for a pre-degree foundation course or a higher course at degree level.

# Media Studies

## A LEVEL - 2 YEARS

Entry Requirements: 5 GCSEs at grade 4-9 (A\*-C) including English + Maths

### What will I study?

This course allows you to find out what goes on behind the scenes of media production, as well as looking at the ways in which the media try to influence you. You will investigate the ways in which the television, film, web and publishing industries work, learn to analyse media texts, and produce practical projects using media. You will have access to our state of the art specialist equipment to support practical work, including a suite of highspec Apple iMacs and a MacBook Pros, green-screen, 3D screening, digital SLR cameras and professional video-editing software.

### How will I be assessed?

Examinations + assignments.

### What can I do next?

The range of practical and analytical skills developed during the course make A Level Media Studies an excellent preparation for higher education courses in any area. If you want to specialise there are a wide range of higher education media courses available, leading to employment opportunities in public relations, journalism, advertising, radio, film, television and digital media.



# Photography

## A LEVEL - 2 YEARS

Entry Requirements: 5 GCSEs at grade 4-9 (A\*-C) including English + Maths.

### What will I study?

You will develop both creative and technical camera and digital skills and build up a substantial portfolio of your own photography inspired by the work of established artists and photographers. You will be introduced to digital photography and explore creative ways to manipulate images, including use of Adobe Photoshop and hands-on image manipulation. You will also look at the work of other photographers and learn how to analyse and evaluate images using specialist terms and vocabulary.

### How will I be assessed?

Examinations + assignments.

### What can I do next?

At the end of the course you will have a full and interesting portfolio of photographic work. Photography is particularly useful if you want to go on to further study in art and design, media and film, photography and digital imaging, as well as being a valuable practical skill. You may wish to use your portfolio to support applications for a Foundation Diploma in Art & Design or specialist Degree level courses.



# Art & Design

**UAL LEVEL 3 EXTENDED DIPLOMA - 2 YEARS**

Entry Requirements: 4 GCSEs at grade 4-9 (A\*-C)  
including English + Maths

## What will I study?

You will have opportunities to work alongside professional artists and designers to give you a greater understanding of the creative industries. You will experiment with a variety of both traditional and experimental techniques, materials and processes, learn new skills, build up a substantial portfolio of work, and gain an insight into the various specialisms that you could follow at a higher level. The course covers areas such as drawing and painting, graphic design, fashion design and textiles, 3D design, fine art, photography, ceramics and design crafts.

## How will I be assessed?

Presentations of sketchbooks + portfolio work.

## What can I do next?

Students from this course have gone on to pre-degree foundation and degree courses in art and design, fine art, textiles, graphic design, architecture, photography, fashion studies and interior design. The portfolio you produce over the course will enable you to show a wide range of relevant experience and skills for future interviews.



# Creative Media Production & Technology

**UAL LEVEL 3 EXTENDED DIPLOMA - 2 YEARS**

Entry Requirements: 4 GCSEs at grade 4-9 (A\*-C)  
including English + Maths

## What will I study?

You will learn a range of digital media production skills including cinematography, sound-design, editing and web-design, and based on those skills you will choose a specialism for your final major project. You will have access to our state of the art specialist equipment, including a suite of Apple iMacs and MacBook Pros, green screen, 3D screening, digital SLR cameras, and expert video equipment.

## What can I do next?

The range of practical and analytical skills developed during the course make this course an excellent preparation for higher education courses in any area. If you want to specialise there are a wide range of higher education media courses available, leading to employment opportunities in public relations, journalism, advertising, radio, film, television and digital media. This course is perhaps best suited to students wanting to focus on a career in creative media production.

## How will I be assessed?

Final project each year. Choose between a website, a music video or similar project.



# Art & Design - Visual Arts & Creative Media

## UAL LEVEL 2 DIPLOMA - 1 YEAR

Entry Requirements: GCSE at grade 3 (D) in English + Maths plus 2 other GCSEs at grade 4 (C)

### What will I study?

The course covers drawing, film making, graphics, photography and painting and 3D areas such as modelling and ceramics. You will complete projects which allow you to learn new skills and explore your own ideas using a range of art and design media. Assignments are based on real-life design briefs and you will find out about how professional artists and designers work.

### How will I be assessed?

Presentation of your sketch books + portfolio.

### What can I do next?

Students from this course can progress onto the UAL Level 3 Extended Diploma in Art & Design or UAL Level 3 Extended Diploma in Creative Digital Media Production. You could study A Levels in subjects such as Art, Media Studies, 3D Design or Photography.

# Games Design (Concept Art & Character Design)

## UAL LEVEL 3 EXTENDED DIPLOMA - 2 YEARS

Entry Requirements: 4 GCSEs at grade 4-9 (A\*-C) including English + Maths

### What will I study?

To create innovative, exciting games, the industry needs more than just computer programmers. It needs artists and storytellers. This course will prepare you for working in the creative side of the games industry, and give you the skills to explore one of the world's most exciting new art-forms. Areas you will study will include concept art, character design and world building, 3D modelling, creating games and visual language and storytelling.

### How will I be assessed?

Portfolio work.

### What can I do next?

The portfolio you produce over the course will enable you to demonstrate a wide range of relevant experience and skills for future interviews. Our Creative and Digital Arts Career Ready programme will provide opportunities for you to gain work-experience and to connect in other ways with real professionals.





# Art & Design - Visual Arts & Creative Media

## UAL LEVEL 1 DIPLOMA - 1 YEAR

Entry Requirements: 2 GCSEs at grade 2 (E) and 1 GCSE at grade 1 (F)  
Students without GCSEs will be asked to complete a diagnostic assessment

### What will I study?

This course has been designed to provide students with an introduction to the creative sector. This will enable you to make informed future progression choices while developing and applying your knowledge and acquiring a range of relevant practical, communication and personal development skills. The course covers drawing, film making, graphics, photography, painting, animation and 3D design. You will complete projects which allow you to learn new skills and explore your own ideas using a range of art and design media.

### How will I be assessed?

Presentation of sketchbooks + portfolio.

### What can I do next?

Students from this course can progress onto the UAL Level 2 Art and Media course or another L2 course in another subject offered at Longley Park.



# English

Studying A Level English will give you the opportunity to develop your understanding of the ways writers communicate across many different genres and forms. You will explore the influence of linguistic, literary, cultural and socio-historical contexts. You will develop your analytical skills and expertise, giving you the ability to delve beneath the surface meaning of words, to explore hidden and intended meanings at another level. You will learn about how the English Language has developed and changed and how it can be used for many different purposes. Studying English at A Level will help you to develop skills in research, presentation, written communication, debate and discussion.

**Simon**  
Curriculum Leader

## Careers and Destinations

- Higher Education
- Communications
- Public Relations/ Journalism
- Writing
- Speech and Language Therapist
- Linguistics
- Marketing
- Teaching
- Management
- Librarian

# English Literature

## A LEVEL - 2 YEARS

Entry Requirements: 5 GCSEs at grade 4-9 (A\*-C) including English + Maths

### What will I study?

You will read, discuss, analyse and write about a wide range of literature. You will develop your critical skills and learn how to present your ideas effectively. You will read widely and independently, engage creatively and apply your knowledge of literary analysis and evaluation in speech and writing. You'll explore the contexts of the texts you're reading and deepen your understanding of the changing traditions of literature in English. The course features a fascinating mix of texts from across the genres.

### How will I be assessed?

Examination + coursework.

### What can I do next?

The critical, analytical and communication skills developed during the course make English Literature an excellent preparation for higher education in any area. If you want to specialise, there are a wide range of courses in English, journalism, media and cultural studies.



# English Language

## A LEVEL - 2 YEARS

Entry Requirements: 5 GCSEs at grade 4-9 (A\*-C) including English + Maths

### What will I study?

This course combines a critical and creative approach. You will analyse and produce texts, demonstrating understanding and skill in how the English language works across a variety of contexts. You will learn about how language works on many different levels. The course will involve studying how we communicate in written and spoken texts according to our social group, region, occupation, gender and ethnicity. You will also learn about how children learn to speak, read, and write, and about how language has changed across time.

### What can I do next?

The study of English Language will develop your confidence in writing and analysis and is, therefore, a valued subject for both university-level study and employment. Some students choose to specialise in areas such as language, linguistics, phonetics and speech and language therapy at university; others go on to further study and work in areas such as teaching, journalism, law, marketing, librarianship and management.

### How will I be assessed?

Examination + coursework.



# Health & Social Care

In Health and Social Care there are some amazing opportunities for you to become involved with. Previous years have seen students visit local universities including Sheffield Hallam and Sheffield University. Students participated in a Health and Social Care Taster Day where there was a carousel of Health Professionals available to meet and receive advice about various professions within the Health Sector. We also provide additional qualifications such as First Aid and our students have the opportunity to be part of the NHS cadet placement scheme. We are really proud of the achievements of our students when they leave us to either progress onto university, Apprenticeships or employment.

**Maxine**  
Curriculum Leader

## Careers and Destinations

- Higher Education
  - Further professional study
  - Nursing
  - Paramedic
  - Occupational Therapy
  - Social Worker
  - Adult or child social care
  - Mental Health Nursing
- Plus many more...**

# Health & Social Care

## **BTEC LEVEL 3 EXTENDED CERTIFICATE - 2 YEARS**

Entry Requirements: 4 GCSEs at grade 4-9 (A\*-C)  
including English + Maths

### **What will I study?**

This course covers health, care of older people, individuals with specific needs and also early years (care and education). You will find out about the needs of different client groups and how they are supported in different Health and Social Care settings. This course includes essential work placement so you develop practical skills and work alongside Health and Social Care Professionals.

### **How will I be assessed?**

Examinations + assignments.

### **What can I do next?**

This qualification will help you to progress to Higher Education on diploma or degree courses related to social work, nursing, paramedic or occupational therapy. We work in partnership with Sheffield Hallam University, and they will guarantee an interview for nursing courses provided you meet the entry requirements. If you do not already have Grade C in GCSE English, Maths or Science, it is important that you re-take these to make sure that you have the qualifications you need for applications to HE and health-related career routes.



# Health & Social Care

## **BTEC LEVEL 3 NATIONAL EXTENDED DIPLOMA - 2 YEARS**

Entry Requirements: 4 GCSEs at grade 4-9 (A\*-C)  
including English + Maths

### **What will I study?**

You will learn about the care needs of different groups, including the elderly, young children and people with disabilities and how care professionals meet these needs. Assignments and projects are based on realistic workplace situations and you will learn about the standards expected in care settings. The course includes essential work placements so you can develop your practical skills and work alongside Health and Social Care professionals.

### **How will I be assessed?**

Examination, assignments + work placement observation.

### **What can I do next?**

Students from this course have gone on to university to study social work, adult social care, child social care, nursing, paramedic studies, mental health nursing and occupational therapy. We work in partnership with Sheffield Hallam University, Sheffield University and many others who offer a range of courses in related areas. Some students go on to employment in a health and social care setting.



# Health & Social Care

## **BTEC LEVEL 2 CERTIFICATE - 1 YEAR**

Entry Requirements: GCSE at grade 3 (D) in English + Maths plus 2 other GCSEs at grade 4 (C)

### **What will I study?**

You will learn about the care needs of different groups including the elderly, young children and people with disabilities and how care professionals meet these needs. This includes human body systems and care of disorders, nutrition and healthy living, human lifespan and development and communication. Assignments and projects are based on realistic workplace situations and you will learn about the standards expected in care settings. Work experience is an essential part of the course.

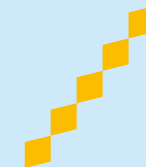
In addition to the main programme you will also complete an additional BTEC work skills qualification.

### **How will I be assessed?**

Examinations + assignments.

### **What can I do next?**

Students from this course have gone on to study the BTEC Level 3 Extended Certificate in Health and Social Care, the BTEC Level 3 Extended Diploma in Health and Social Care course or other Level 3 qualifications such as Childcare. With further training or study you could go on to a career in areas such as residential or health care or teaching support.



# Health & Social Care

## **BTEC LEVEL 1 INTRODUCTORY DIPLOMA - 1 YEAR**

Entry Requirements: 2 GCSEs at grade 2 (E) and 1 GCSE at grade 1 (F)  
Students without GCSEs will be asked to complete a diagnostic assessment

### **What will I study?**

You will find out about opportunities for work in the Care sector and develop the personal skills you need to care for people. Some of the units include healthy lifestyles, communication and care services. This course is all about improving your confidence and personal skills. It is a personalised learning programme - which means that it is tailored to what you need in order to progress on to further training, employment or study.

### **How will I be assessed?**

Practical projects, written assignments, tasks + observations.

### **What can I do next?**

Students from this course have gone on to Level 2 courses including sports, art and design, media, business, health, childcare and science. Some students have then gone on to advanced study and to university. Others have chosen employment or apprenticeships.





# Vocational Studies

## **BTEC LEVEL 1 INTRODUCTORY DIPLOMA - 1 YEAR**

Entry Requirements: 2 GCSEs at grade 2 (E) and 1 GCSE at grade 1 (F)

Students without GCSEs will be asked to complete a diagnostic assessment

### **What will I study?**

This course is all about improving your confidence and personal skills. It is a personalised learning programme - which means that it is tailored to what you need in order to progress on to further training, employment or study.

### **How will I be assessed?**

Practical projects, written assignments, tasks + observations.

### **What can I do next?**

Students from this course have gone on to Level 2 courses including sports, art and design, media, business, health, childcare and science. Some students have then gone on to advanced study and to university. Others have chosen employment or apprenticeships.

# Humanities

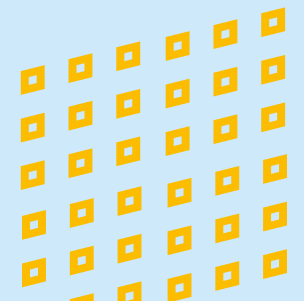
Humanities subjects allow students to understand the world around them, where we have been and where we are going. Understanding how humans interact with their environment and each other is central to developing a better world to live in. Whether you study Humanities alongside an alternative subject area, or you combine more than one Humanities subject, they give you the advantage of a deeper comprehension of these themes and will help you stand apart when applying for universities or employment. Humanities students are viewed favourably because of the unique skills they develop. Moral, ethical, cultural and ideological approaches are central to the analytical and critical evaluation of sources.

## Ian

Achievement Leader

## Careers and Destinations

- Higher Education
- Teaching
- Journalism
- Public Services
- Researcher
- Government
- Politician
- Historian
- Care Professional
- Lawyer





# Geography

## A LEVEL - 2 YEARS

Entry Requirements: 5 GCSEs at grade 4-9 (A\*-C) including English + Maths

### What will I study?

You will learn about how we shape the world we live in, and how we can manage the big issues facing humanity, such as population growth, climate change and increasing demand for limited resources such as water. You will learn about the geography of the local area, in the UK and around the world. You will explore new human environments such as world megacities, alongside dynamic physical environments such as those created by earthquakes and volcanoes. Fieldwork is an important part of the course, and you will have the opportunity to carry out your own study allowing you to develop a wide range of skills which are valued by employers and universities.

### How will I be assessed?

Examinations + fieldwork investigation.

### What can I do next?

Geography is an extremely versatile subject which is a valuable foundation for Science, Humanities and Arts subjects at Higher Education. Geography students are highly sought after both by universities and employers due to the unique range of skills they develop and their in depth understanding of the world. There are a wide range of university courses which value Geography as an A Level and the subject is particularly useful for students interested in further study, or work, in the areas of journalism, travel and tourism, civil engineering, surveying, environmental science, environmental law, economics, architecture, local and central government, the police, global development, scientific research and meteorology.



# Government & Politics

## A LEVEL - 2 YEARS

Entry Requirements: 5 GCSEs at grade 4-9 (A\*-C) including English + Maths

### What will I study?

Why do we have rules in Society? What is the point of the Government system? How does our system work and how does everyone play a part in it? Who holds the power to make things happen and create change? If you are interested in how our society functions then Government and Politics may be right up your street. You will learn about the way decisions made by government influence people's lives, and the way that people can participate in local, national and global politics.

### How will I be assessed?

Written examination.

### What can I do next?

As well as offering you insights into the ways in which the British and American political systems work, A Level Politics will help you to develop an enquiring and critical mind. The course provides an excellent background for careers in law, journalism, the caring professions, teaching and a range of management and business areas. It teaches you to think analytically and philosophically. As such it is well respected by universities and employers alike.



# Psychology

**A LEVEL - 2 YEARS**

Entry Requirements: 5 GCSEs at grade 4-9 (A\*-C) including English, Maths + Science

## What will I study?

Psychology is the scientific study of mind and behaviour, attempting to explain why people behave in the ways they do. You will discover and analyse what psychologists have found out about key issues such as the structure of memory, understanding social influence and the cause of mental illness. You will study major perspectives in the areas of biological and cognitive, behavioural psychology as well as research methods, data handling and statistics. You will also study clinical, health and criminal psychology.

## What can I do next?

Psychology is one of the fastest growing subjects in Higher Education. A Level Psychology is not a requirement for a degree but will give you a useful insight into the subject. Psychology graduates are highly sought after due to their unique mix of skills in literacy, numeracy and science. Psychology is also beneficial for work in marketing, education, nursing, advertising, social work, HR and public services.

## How will I be assessed?

Examination.

# History

**A LEVEL - 2 YEARS**

Entry Requirements: 5 GCSEs at grade 4-9 (A\*-C) including English + Maths

## What will I study?

You will study the French Revolution, arguably the most significant event in world history, looking in detail at the reasons for it, the main events of it and the events that followed it. You will also study British history between 1851 and 1974 and will learn how the British society we see today was formed including how it was influenced by, and further developed, the principles of the French Revolution.

## How will I be assessed?

Written examination + coursework.

## What can I do next?

History is an excellent subject for the study of a wide range of university courses including law, economics, business studies, philosophy, English, archaeology, politics and social sciences. If you choose to specialise in History there are a wide range of courses available leading to employment in all sorts of fields, including law, journalism, business, teaching and the museum and heritage sector.



# Religious Studies

**A LEVEL - 2 YEARS**

Entry Requirements: 5 GCSEs at grade 4-9 (A\*-C) including English + Maths

## What will I study?

Religion is a powerful force in our world, influencing the way people conduct their lives and shaping the way that people think. You will explore philosophical and ethical perspectives of belief, from faith, scientific, agnostic and atheist positions. You will also compare and contrast all major traditions; Islam, Christianity, Judaism, Hinduism and Buddhism.

## How will I be assessed?

Examination.

## What can I do next?

An A Level in Religious Studies is really useful for studying wider Humanities, English and Social Science subjects at university, such as history, sociology, politics, law, anthropology and philosophy. The course develops analytic, interpretation and argument skills. Also, having a contextual understanding of alternative world perspectives provides a solid grounding when it comes to interpreting wider academic theory and concepts. As such, these skills, and the wider understanding of moral issues, can be particularly useful for students keen to study medicine, caring and the media. Ultimately, having a deeper understanding of the world demonstrates an ability to be tolerant and empathetic to those within society, which is very attractive to prospective employers in the future.



# Sociology

**A LEVEL - 2 YEARS**

Entry Requirements: 5 GCSEs at grade 4-9 (A\*-C) including English, Maths + Science

## What will I study?

Sociology is the study of the individual and society and will appeal to students who are interested in investigating how our everyday lives are shaped by factors such as class, gender and ethnicity. Sociology will develop your research skills and your ability to weigh up evidence and arguments. You will look at human behaviour by studying social groups and the influences on their actions, ideas and beliefs. You will also look at the different methods used by sociologists to collect information and you will study the various theoretical perspectives that aim to explain why society is organised the way it is.

## How will I be assessed?

Examination.

## What can I do next?

A Level Sociology is a valuable subject for a wide range of careers and higher education courses. You may wish to look specifically at areas which involve an understanding of people and social relationships, such as journalism, health care, social work, education, the public services, marketing and management.



# Criminology

**WJEC LEVEL 3 DIPLOMA - 2 YEARS**

Entry Requirements: 5 GCSEs at grade 4-9 (A\*-C)  
including English + Maths

## What will I study?

Criminology is the study of crime and criminal behaviour. You will learn about different types of crime and how perceptions of crime may differ. You will also gain an understanding of why people commit crime and how the criminal justice system works. You will study real life situations and cases and apply criminological theories to evaluate the effectiveness of social control and criminal justice policies.

## What can I do next?

Studying Level 3 Criminology will help you gain access to a wide range of higher education courses, including Criminology, Psychology, Sociology and Law. The qualification also provides students with valuable skills and understanding that can lead to a career in a number of areas, such as journalism, law, social work, education and the public services.

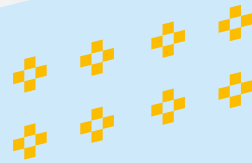
## How will I be assessed?

Examination + controlled assessment.

# Applied Psychology

**BTEC LEVEL 3 EXTENDED CERTIFICATE - 2 YEARS**

Entry Requirements: 5 GCSEs at grade 4-9 (A\*-C)  
including English, Maths + Science



## What will I study?

Psychology is the scientific study of mind and behaviour, attempting to explain why people behave in the ways they do. You will discover approaches in psychology including biological, social and cognitive explanations of behaviour. This course combines fascinating content with scientific rigour, statistical analysis and combines equally well with science or humanities subjects. You will study major perspectives in psychology and see how research has been applied to the areas of business, gender and criminological psychology. You will also look at the application of psychology to health and wellbeing with an emphasis on addiction, gambling and stress.

## How will I be assessed?

Examination + assignments.

## What can I do next?

Studying Psychology at Level 3 is not a requirement for a degree but will give you a useful insight into the subject. Psychology graduates are highly sought after due to their unique mix of skills in literacy, numeracy and science. Psychology is also beneficial for work in marketing, education, nursing and the health care sector, social work, HR and public services.





# Information Technology & Computing

Information Technology and the Computing qualifications are highly sought after by many employers. These qualifications will not only give you the practical skills and knowledge needed but will allow you to gain the analytical skills to be successful, either to progress into industry or on to university. You have the chance to design and create working products that can affect our everyday life. We have a variety of BTEC qualifications at all levels to suit your desired progression route.

**James**  
Curriculum Leader

## Careers and Destinations

- Higher Education
- Training or Apprenticeship
- e-Business
- Software Engineer
- Information Security
- Network Management and Design
- IT Practitioner

# Information Technology

## **BTEC LEVEL 3 EXTENDED CERTIFICATE - 2 YEARS**

Entry Requirements: 4 GCSEs at grade 4-9 (A\*-C)  
including English + Maths

### **What will I study?**

You will improve your knowledge and practical skills in IT, including web design and e-commerce, data communications, expert systems and computing. You'll find out about how computer systems work and learn how to use different applications. Assignments are based on workplace situations so you will get a real insight into the careers available in IT and what it is like to work in industry.

### **How will I be assessed?**

Examinations + assignments.

### **What can I do next?**

Students from this course have gone on to university to study computing, e-Business, IT for practitioners and software engineering. The course develops valuable skills for other higher level courses and employment.



# Computing

## **BTEC LEVEL 3 EXTENDED CERTIFICATE - 2 YEARS**

Entry Requirements: 4 GCSEs at grade 4-9 (A\*-C)  
including English + Maths

### **What will I study?**

Alongside core units in communication and employability and computer systems, this course is designed specifically for those students interested in computing rather than ICT in general. Additional units of study on this pathway will include a range from databases, programming, networking and mathematical concepts.

### **How will I be assessed?**

Examinations + assignments.

### **What can I do next?**

Students from this course will go on to university to study computing, e-Business, IT for practitioners and software engineering. The course develops valuable skills for other higher level courses and employment.

# Information Technology

**BTEC LEVEL 3 EXTENDED DIPLOMA - 2 YEARS**

Entry Requirements: 4 GCSEs at grade 4-9 (A\*-C) including English + Maths

## What will I study?

You will develop knowledge and practical skills in the field of information and communications technology, including web design and e-commerce, data communications, expert systems and computing. You will complete practical projects and assignments based on realistic workplace situations and find out about career routes in IT.

## How will I be assessed?

Examinations + assignments.

## What can I do next?

Students from this course have gone on to university to study information technology management, business information technology, computer and information security, software engineering and network management and design. Some go directly into employment with training.



# Information & Creative Technology

**BTEC LEVEL 2 CERTIFICATE - 1 YEAR**

Entry Requirements: GCSE at grade 3 (D) in English + Maths plus 2 other GCSEs at grade 4 (C)

## What will I study?

You will learn about computer and information systems, web design, working in the IT industry, database and communications technology. You will learn by completing projects and assignments that are based on realistic workplace situations and find out about jobs in the IT sector. Students will have access to the latest in IT resources, both for lessons and for private study. In addition to the main programme, you will complete a BTEC Work skills qualification.

## How will I be assessed?

Examinations + assignments.

## What can I do next?

Students from this course have gone on to study the Level 3 Extended Diploma in IT or a combination of A Levels and Level 3 Subsidiary Diplomas. Others have chosen to follow an Apprenticeship route.



# Law

A Law qualification is highly desired by many employers as this qualification will give you the skills and knowledge to be successful, either to progress in to employment or onto university. You have the opportunity to gain an interesting insight into the ever changing world of Law by studying a variety of subjects related to the current legal system. The route we offer is a BTEC pathway.

**James**  
Curriculum Leader

## Careers and Destinations

- Higher Education
- Solicitor
- Barrister
- Journalism
- Public Relations
- Teaching
- Management





# Law

## BTEC LEVEL 3 EXTENDED CERTIFICATE - 2 YEARS

Entry Requirements: 5 GCSEs at grade 4-9 (A\*-C)  
including English + Maths

### What will I study?

You will find out about the English legal system and how law influences our daily lives. Assignments are designed to give you a real sense of what it is like to work in the legal professions and visits to courts in session and discussions with guest speakers will be part of the course. The skills you will develop on the course, such as being able to see both sides of an argument, effective research skills and solving complex legal problems will be of value to you in other areas of life.

### How will I be assessed?

Examination + assignments.

### What can I do next?

You may go on to study Law at university with a view to becoming qualified as a Solicitor or Barrister. Law also provides a good basis for further study of any subject at a higher level, and is valued by employers in a range of areas such as journalism, public relations, teaching and a range of management and business areas.



# Maths

Maths is a really exciting subject which opens many doors for progression; it is highly respected by employers and Universities. We emphasise the problem solving skills required for applying mathematics to the real world. You will be given the opportunity to take part in both individual and team mathematics competitions, competing against students from across the country. If you achieve a really high result you could even be invited to compete at the very prestigious British Mathematics Olympiad. Mathematics is an extremely rewarding subject and we will support you to achieve your potential at whichever level you are working. Our extensive range of workshops will provide you with the extra individual support required for you to achieve the highest grade possible.

## **Sharon**

Curriculum Leader

## Careers and Destinations

- Higher Education
- Engineering
- Computer Science
- Medicine
- Social Science
- Business
- Accounting
- Science

# Mathematics

## A LEVEL - 2 YEARS

Entry Requirements: 5 GCSEs at grade 4-9 (A\*-C) including English plus a grade 6(B) in Maths

### What will I study?

You will study pure mathematics which will extend your knowledge of topics such as algebra, coordinate geometry and trigonometry. You will also learn new concepts such as calculus. Alongside pure mathematics you will study mechanics and statistics. Statistics will build on and extend your data and probability knowledge, mechanics looks at the physics of motion and forces.

### How will I be assessed?

Examinations.

### What can I do next?

A Level Maths is essential for Higher Education courses in computer science, engineering, physics or mathematics itself. It is also highly desirable for science and social sciences, any medically-related qualification, business and accounting.

# Further Mathematics

## A LEVEL - 2 YEARS

Entry Requirements: 5 GCSEs at grade 4-9 (A\*-C) including English plus a grade 8(A) in Maths.

### What will I study?

You will study A Level Mathematics in your first year and then study A Level Further Mathematics in your second year. As well as allowing you to study mathematics in more depth, Further Mathematics gives you a much broader mathematical background ensuring you are highly employable in all mathematical fields. You will study pure mathematics which will extend your knowledge of topics such as algebra, coordinate geometry and trigonometry. You will also learn new concepts such as calculus. Alongside pure mathematics you will study mechanics and statistics.

### How will I be assessed?

Examinations.

### What can I do next?

Further Mathematics students are particularly well prepared for degree level courses in mathematics, engineering, science, medicine, dentistry, computing, finance, economics and other mathematics based subjects.

# Core Maths

## LEVEL 3 CERTIFICATE - 1 YEAR

Entry Requirements: 4 GCSEs at grade 4-9 (A\*-C)  
including English + Maths

### What will I study?

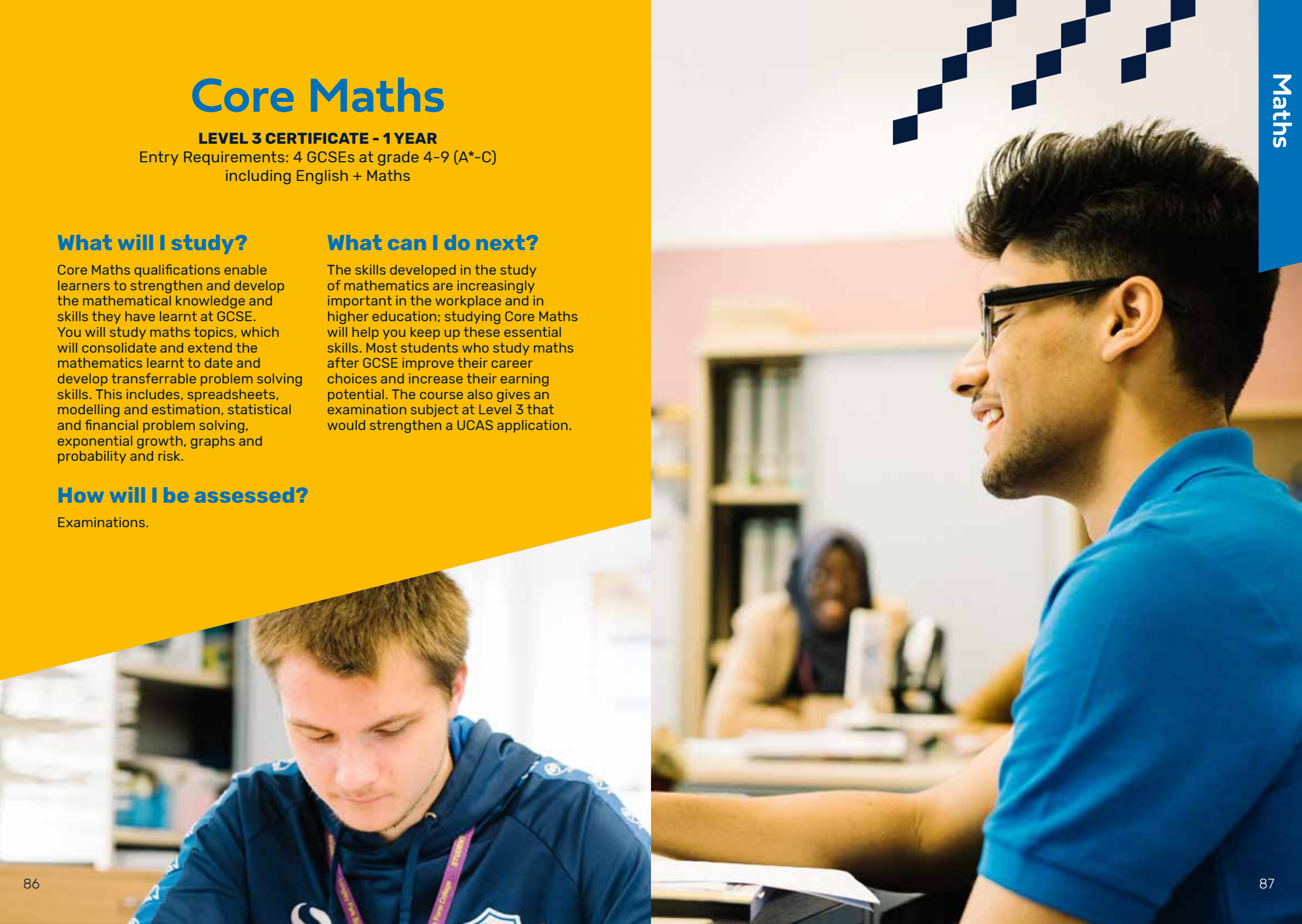
Core Maths qualifications enable learners to strengthen and develop the mathematical knowledge and skills they have learnt at GCSE. You will study maths topics, which will consolidate and extend the mathematics learnt to date and develop transferrable problem solving skills. This includes, spreadsheets, modelling and estimation, statistical and financial problem solving, exponential growth, graphs and probability and risk.

### How will I be assessed?

Examinations.

### What can I do next?

The skills developed in the study of mathematics are increasingly important in the workplace and in higher education; studying Core Maths will help you keep up these essential skills. Most students who study maths after GCSE improve their career choices and increase their earning potential. The course also gives an examination subject at Level 3 that would strengthen a UCAS application.



# Science

We are extremely proud of the work our students produce and the wide range of scientific skills they develop as our courses are taught in a very practical way. Our teachers come from a wide range of industrial backgrounds and are able to offer students real-life context to learning. Graduating students have gone on to study Medicine; Veterinary Science; Pharmacy; Radiography; Electrical, Aerospace, Automotive and Mechanical Engineering; Biomedical Sciences and lots of other courses, many at Russell Group universities. We encourage our students to take up a range of opportunities, including NHS experience through our volunteering links; becoming part of national data collection on climate change with the Peak District National Parks or gaining one of the prestigious placements or with the Nuffield Foundation working with university professionals on real projects.

## **Fran**

Curriculum Leader

## **Careers and Destinations**

- Higher Education
- Medicine
- Dentistry
- Physiotherapy
- Veterinary Medicine
- Forensic Science
- Pharmacy
- Biochemistry
- Psychologist
- Radiography

# Chemistry

## A LEVEL - 2 YEARS

Entry Requirements: 5 GCSEs at grade 4-9 (A\*-C) including English, plus Maths + 2 Science GCSEs at 6 (B)

### What will I study?

Chemistry allows you to learn more about the structure of the world around you through experiments and find out about the chemical reactions that we encounter every day, whether it be in breathing, baking or driving a car. You will study atomic structure, bonding and the periodic table. Other key topics studied include chemical kinetics, equilibrium and molar calculations. You will develop new practical skills in organic synthesis, extraction and analysis whilst being introduced to new topic areas such as Transition Metals.

### How will I be assessed?

Examination + practical endorsement.

### What can I do next?

Chemistry develops lots of skills that are relevant for employment or study at a higher level, such as problem solving, scientific method, practical work and use of number. Chemistry is essential if you want to study medicine, dentistry, pharmacy, forensic science or veterinary science at a higher level. Other popular choices for progression include chemistry, chemical engineering and biochemistry. Chemistry is often a desired choice for entrance to other science-based courses and occupations.

# Biology

## A LEVEL - 2 YEARS

Entry Requirements: 5 GCSEs at grade 4-9 (A\*-C) including English, plus Maths + 2 Science GCSEs at 6 (B)

### What will I study?

Biology gets in to many areas of our life including food safety, agriculture, medicine, sport and scientific research. You will learn about the nature of life from the molecules and chemicals that life is built upon to the way populations of the world's living organisms develop and live together. Biology is a very hands-on subject and there will be regular practical work in class. Your study will involve some dissection of animal and plant material. Data analysis also forms an integral part of the course so you need to be confident using Maths. If you are not studying A Level Chemistry, you will need to work with your Biology teachers to cover the basic biochemistry needed for this course.

### How will I be assessed?

Examination + practical endorsement.

### What can I do next?

Biologists can be found in many places, including medicine, dentistry, physiotherapy, veterinary medicine, laboratory work, forensics, pathology and nursing. Biology is also a well respected A Level for a wide range of non-science related courses and careers because it helps you to develop analytical, practical and investigative skills.

# Physics

## A LEVEL - 2 YEARS

Entry Requirements: 5 GCSEs at grade 4-9 (A\*-C) including English, plus Maths + 2 Science GCSEs at 6 (B)

### What will I study?

Physics gives you the opportunity to investigate and understand some of the fundamental laws of the universe, ranging from the tiniest particles of matter to vast star systems. You will cover topics such as mechanics, subatomic particle physics, electricity and theory of waves. You will also study topics which include gravitational, electrical and magnetic forces, nuclear and thermal physics and oscillations.

### How will I be assessed?

Examination + practical endorsement.

### What can I do next?

A Level Physics is a good starting point for further study of natural science and engineering related courses. It also supports progression into subjects such as medicine and radiography and is a good background for courses in many other fields, especially those that rely on numeracy and logical thought.



# Applied Human Biology

## BTEC LEVEL 3 EXTENDED CERTIFICATE - 2 YEARS

Entry Requirements: 5 GCSEs at grade 4-9 (A\*-C) including English, Maths + Science

### What will I study?

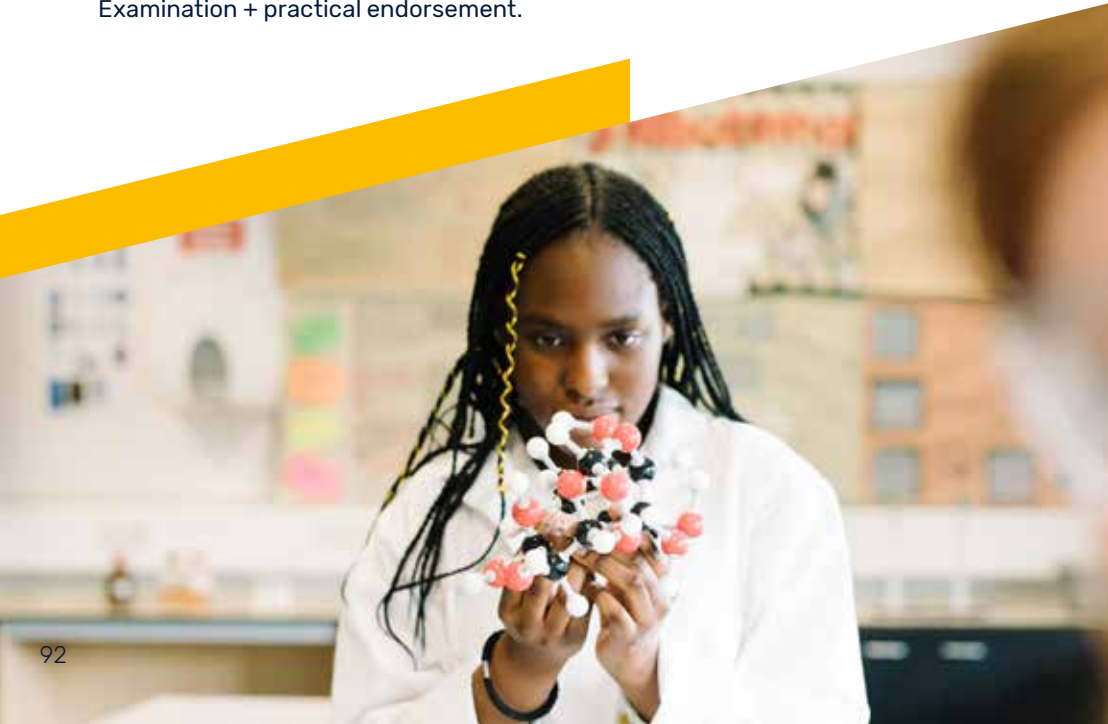
How the human body works, in good and poor health. Functioning at a genetic, cellular and tissue level. You will gain understanding of how this knowledge can be applied in order to improve diagnostic and health outcomes as well as the effects of microorganisms on human health.

### How will I be assessed?

External assessments + internal assignments.

### What can I do next?

Students can go on to university to study biomedical science, medical genetics, health and human sciences, human biology, biochemistry, podiatry, forensic science, biology, biosciences, genetics and molecular biology, microbiology and molecular biology, veterinary science, wildlife conservation, radiotherapy, radiography and a range of other courses.



# Applied Science

## BTEC LEVEL 3 DIPLOMA - 2 YEARS

Entry Requirements: 4 GCSEs at grade 4-9 (A\*-C) including English, Maths + Science

### What will I study?

You will study all of the main sciences, Chemistry, Biology and Physics in detail. You will learn about how science knowledge and skills are used in a variety of scientific workplaces, analytical sciences and biomedical sciences.

### How will I be assessed?

Examinations + assignments.

### What can I do next?

Our BTEC Applied Science students have gone on to university to study gateway to medicine, chemical engineering, pharmaceutical science biomedical science, medical genetics, health and human sciences, human biology, biochemistry, podiatry, forensic science, biology, biosciences, genetics and molecular biology, microbiology and molecular biology, veterinary science, wildlife conservation, radiotherapy and radiography. Many of these students have gone to the prestigious Russell Group Universities. Students have also taken up apprenticeships including microbiology and surgical instrumentation.



# Engineering

## BTEC LEVEL 3 EXTENDED CERTIFICATE - 2 YEARS

Entry Requirements: 5 GCSEs at grade 4-9 (A\*-C) including English, Maths + Science

### What will I study?

You will learn about mechanical and electrical engineering principles and applications and how to solve real life engineering problems. The course involves practical work on electrical circuits, forces, materials testing and servicing engineered components.

### What can I do next?

You can progress to study engineering at university or apply for technical apprenticeships or technician jobs in the engineering industry.

### How will I be assessed?

External assessments + internal assignments.





# Applied Science

**BTEC LEVEL 3 EXTENDED DIPLOMA - 2 YEARS**

Entry Requirements: 4 GCSEs at grade 4-9 (A\*-C) including English, Maths + Science

## What will I study?

You will study all of the main sciences, Chemistry, Biology and Physics in detail. You will learn about how science knowledge and skills are used in a variety of scientific workplaces, analytical sciences and biomedical sciences.

## How will I be assessed?

Examinations + assignments.

## What can I do next?

Our BTEC Applied Science students have gone on to university to study chemical engineering, pharmaceutical science biomedical science, medical genetics, health and human sciences, human biology, biochemistry, podiatry, forensic science, biology, biosciences, genetics and molecular biology, microbiology and molecular biology, veterinary science, wildlife conservation, radiotherapy and radiography. Many of these students have gone to the prestigious Russell Group Universities. Students have also taken up apprenticeships including microbiology and surgical instrumentation.



# Applied Science

**BTEC LEVEL 2 EXTENDED CERTIFICATE - 1 YEAR**

Entry Requirements: GCSE at grade 3 (D) in English + Maths plus 2 other GCSEs at grade 4 (C)

## What will I study?

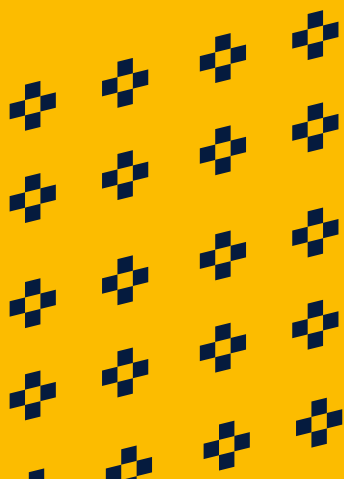
You will carry out experiments and learn how science is used in different jobs. The course covers Biology, Chemistry and Physics and the skills needed by scientists to collect, analyse and interpret data. Assignments are based on real applications of science in areas such as forensic science, food technology and environmental science.

## How will I be assessed?

You will be assessed through practical projects and assignments and two external exams.

## What can I do next?

Students from this course have gone on to do the BTEC Level 3 Extended Diploma in Applied Science.



# Sport

We continue to be impressed by the goals that our students aim for and achieve. We will help you to develop the skills and qualities needed for your chosen profession. Through links with employers and the local community you will be given the opportunity to enhance your skills, knowledge and experience in a variety of sports based contexts. These include links with professional sports clubs such as Sheffield Wednesday FC, National Governing Bodies, charities, voluntary organisations and local schools. We also has a fantastic enrichment programme that you can also get involved in, either by playing, coaching, umpiring and scoring or volunteering. Sports you get involved in and play include football, basketball, table tennis, badminton, tennis, handball, indoor cricket and dodgeball. We also has a fully functional gym that sport students will be able to use for some assignments, and also to train outside of lesson times free of charge. You will also have the opportunity to gain additional qualifications such as First Aid, Fitness Instructors qualification plus more.

**Maxine**  
Curriculum Leader

## Careers and Destinations

- Higher Education
- Sports Coaching
- Sports Science
- Fitness and Wellbeing
- PE Teaching
- Sports Therapy
- Leisure Management
- Sports Psychology
- Sports Journalism
- Sports Development

# Sports Development, Coaching & Fitness

**BTEC LEVEL 3 NATIONAL EXTENDED CERTIFICATE - 2 YEARS**

Entry Requirements: 4 GCSEs at grade 4-9 (A\*-C)  
including English + Maths

## What will I study?

You will cover topics like anatomy, fitness testing, sports leadership, and sports psychology. Throughout the course you will be involved in both theoretical and practical work. You will explore sports development and become involved in community sports and organise events such as coaching sessions for school children. Projects and assignments are designed so that you find out what it is really like to work in the industry.

## How will I be assessed?

Examinations, practical projects, assignments + presentations.

## What can I do next?

Students from this course have gone on to university to study sports coaching, sports science, sport psychology, sport journalism, fitness and wellbeing, PE teaching, sports therapy and leisure management, sport development as well as employment in the sports and leisure industries. Students have also gone on to study non-sport related courses, which we would be happy to discuss with you.



# Sports Development, Coaching & Fitness

**BTEC LEVEL 3 NATIONAL EXTENDED DIPLOMA - 2 YEARS**

Entry Requirements: 4 GCSEs at grade 4-9 (A\*-C)  
including English + Maths

## What will I study?

You will cover topics like anatomy, sport psychology, fitness testing, sports leadership, and coaching for performance. Throughout the course you will be involved in both theoretical and practical work. You will explore sports development and become involved in community sports and organise events such as coaching sessions for school children. Projects and assignments are designed so that you find out what it is really like to work in the industry.

## How will I be assessed?

Examinations, practical projects, assignments + presentations.

## What can I do next?

Students from this course have gone on to university to study sports coaching, sports science, sport psychology, sport journalism, fitness and wellbeing, PE teaching, sports therapy and leisure management, sport development as well as employment in the sports and leisure industries. Students have also gone on to study non-sport related courses, which we would be happy to discuss with you.

# Sport

## **BTEC LEVEL 2 CERTIFICATE - 1 YEAR**

Entry Requirements: GCSE at grade 3 (D) in English + Maths plus 2 other GCSES at grade 4 (C)

### **What will I study?**

You will study subjects like: Anatomy and Physiology for Sports Performance, Work Experience in Sport, Training for Personal Fitness. You will be working in the community to provide additional experience; your assignments will be vocationally related to help you to understand what you need to complete.

There will be a weekly practical session.

### **How will I be assessed?**

Examinations, practical + written assignments.

In addition to the main programme you will also complete a BTEC work skills qualification.

### **What can I do next?**

You may wish to go on to study the BTEC Extended Diploma in Sport Development Coaching & Fitness or a combination of BTEC Level 3 Subsidiary Diplomas in differing subject areas. Other students have also gone on to complete apprenticeships or employment in the fitness and leisure industry.





# GCSEs, Functional Skills & ESOL

We are committed to helping students develop their skills in English and Maths, as these are essential for success in other subjects. If you do not already have a grade 4/C in English and/or Maths you will work towards these during your time at Longley Park. We will work with you to decide on the right level course for you. For some people the GCSE courses are ideal. In other cases it might be sensible to build up your existing skills before moving on to the next level. GCSE Science is important for career routes in health and teaching.



# English

## GCSE AND PART-TIME ESOL, FUNCTIONAL SKILLS

Entry Requirements: We will use your previous grade and an initial assessment to help us to identify the best course for you. We offer GCSE and Functional Skills courses and Entry Level, Level 1 and Level 2 for students who need more time to develop their skills.

We offer several courses leading to qualifications in English. We will complete a diagnostic assessment with you to find out which course will be most suitable for your needs. If English is not your first language we can tailor the course to help you develop your understanding and confidence.

### What will I study?

On our English courses, we will help you improve your skills in punctuation, spelling and grammar. The GCSE English Language course involves the study of both fiction and non-fiction, texts from different cultures, creative writing and spoken language. You will also learn to analyse the different techniques used in different forms

of writing. The course will also help you to improve your independent study skills. Our Functional Skills and ESOL courses are assessed across three units – Speaking and Listening, Reading and Writing. We will work with you to develop your skills in these areas and support you to progress onto the GCSE course.

### How will I be assessed?

These courses are all assessed by examination.

# Maths

## GCSE AND FUNCTIONAL SKILLS

Entry Requirements: We will use your previous grade and an initial assessment to help us to identify the best course for you. We offer GCSE courses and also Functional Skills for students who need more time to develop their skills.

We offer several courses leading to qualifications in Mathematics. We will work with you to identify your current level at the start of the course. You will study Maths at the right level to develop your skills.

### How will I be assessed?

Examinations.

### What will I study?

You will build on the work you did at your previous school and improve your maths skills.





# Science: Biology

## GCSE - 1 YEAR

Entry Requirements: You should have the equivalent of a GCSE grade 2/E or better in Single or Dual Science, Applied Science or Biology and also in Maths.

### What will I study?

You will build on the biological science you studied at school. The course covers three main areas, understanding ourselves by looking at the structure and main system of the body, understanding our environment including plants and pollution and the world of micro-organisms including bacteria. This is a very hands-on subject and you will take part in practical work and a field trip. Your study will involve some dissection of biological material.

### How will I be assessed?

Examinations.

# Full-Time ESOL

## ENGLISH FOR SPEAKERS OF OTHER LANGUAGES

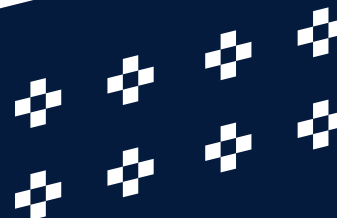
Entry Requirements: Our full time ESOL course is designed to support all abilities from pre-Entry to Entry 3. You do not need any formal qualification as you will be assessed at the beginning of term to check you are studying at the correct level.

### What will I study?

You will work in a supportive environment to develop your English skills in reading, writing, and speaking and listening. Classes are grouped by level so you will be studying with students who are at a similar stage in their learning. We have a mix of nationalities and first languages in the classes. The groups are small and friendly and you will receive lots of individual feedback from your teachers. In addition to your ESOL study, you will also attend classes to improve your skills in ICT and mathematics.

### How will I be assessed?

Examinations.



# Extended Project Qualification (EPQ)

**The EPQ is a Level Three, research driven course that high achieving students take alongside their main areas of study. It is a one year course that is usually taken spanning the first and second year of study.**

Top universities are really keen to see students achieve the qualification, which is awarded at A Level standard, between grades A\* to E, as it demonstrates commitment and a development of crucial academic skills.

## **Skills include:**

- Research technique
- Critical thinking and argument technique
- Time management
- Self-reflection
- Referencing
- Essay structure and source engagement
- Independent study and working with a supervisor
- Academic presentation

Students must complete 120 hours of work over the duration of the qualification and can choose any topic they are passionate about. Many opt to write a 5,000 word essay, however some choose to create an artefact and write a shorter essay alongside it.

Each year, two thirds of students who complete the EPQ achieved a high grade, (A\*, A or B). In four of the last six years, our students have achieved 100% – the highest mark in the country. So if you want to stand out from the crowd, and you are passionate about academia, this is the course for you!



## Safeguarding

### **Be Safe and Feel Safe.**

Your safety and wellbeing is a priority at all times at Longley Park. If you have any personal concerns or worries about a friend, talk to a member of staff. Whatever your concerns and needs, we want to hear them and will work with you to address them. Support includes wellbeing, counselling and referral to external agencies.

### **The Safeguarding Leads at Longley Park are:**

#### **Donald McLean**

Vice Principal (Student Engagement)

#### **Tania Hussey-Yeo**

Assistant Principal  
(Student Achievement)

#### **Vicky Bark**

Student Support Manager

Their offices are designated safeguarding points where you can go to discuss concerns you may have. Please remember any member of staff is there to help you if you have any worries.



# How to find us

Longley Park Sixth Form is on Barnsley Road, opposite Longley Park itself. There are fantastic bus links into the city centre, across Sheffield and to Meadowhall.

Travel information about services, discounts and concessions available to students attending Longley Park Sixth Form is available from Student Services.

For further information, please visit our website at [www.longleypark.ac.uk](http://www.longleypark.ac.uk)



# We are Longley Park.



## Longley Park

SIXTH FORM

Horninglow Road, Sheffield S5 6SG

Tel: 0114 262 5757

[longleypark.ac.uk](http://longleypark.ac.uk)



**BRIGANTIA**  
LEARNING TRUST

Creating excellence together