



# English

Studying A Level English Language or Literature will give you the opportunity to develop your understanding of the ways writers communicate across many different genres and forms. You will explore the influence of linguistic, literary, cultural, social and historical contexts. You will develop your analytical skills and expertise, giving you the ability to delve beneath the surface meaning of texts, to explore hidden and implied meanings at another level. You will learn about how the English language has developed and changed and how it can be used for many different purposes. Studying English at A Level will help you to develop skills in research, written and verbal communication, debate and discussion.

English subjects are highly regarded by universities as they give students the opportunity to develop skills in critical reading, analysis, evaluation and communication. These are skills that are much sought after in the workplace – particularly in areas such as the media, journalism, law, research, social work and education.

## Careers and Destinations

- Higher Education - Degree in Linguistics
- Public Relations/ Journalism
- Writing
- Speech and Language Therapist
- Marketing
- Teaching
- Management
- Librarian
- Speech and Language Therapy Theatre Production
- Creative Journalism
- Law

# English Literature

## A LEVEL - 2 YEARS

Entry Requirements: 5 GCSEs at grade 4-9 (A\*-C) including English + Maths

### What will I study?

You will read, discuss, analyse and write about a wide range of literature. You will develop your critical skills and learn how to present your ideas effectively. You will read widely and independently, engage creatively and apply your knowledge of literary analysis and evaluation in speech and writing. You'll explore the contexts of the texts you're reading and deepen your understanding of the changing traditions of literature in English. The course features a fascinating mix of texts from across the genres.

### How will I be assessed?

Examination + coursework.

### What can I do next?

The critical, analytical and communication skills developed during the course make English Literature an excellent preparation for higher education in any area. If you want to specialise, there are a wide range of courses in English, journalism, media and cultural studies.



# English Language

## A LEVEL - 2 YEARS

Entry Requirements: 5 GCSEs at grade 4-9 (A\*-C) including English + Maths

### What will I study?

This course combines a critical and creative approach. You will analyse and produce texts, demonstrating understanding and skill in how the English language works across a variety of contexts. You will learn about how language works on many different levels. The course will involve studying how we communicate in written and spoken texts according to our social group, region, occupation, gender and ethnicity. You will also learn about how children learn to speak, read, and write, and about how language has changed across time.

### What can I do next?

The study of English Language will develop your confidence in writing and analysis and is, therefore, a valued subject for both university-level study and employment. Some students choose to specialise in areas such as language, linguistics, phonetics and speech and language therapy at university; others go on to further study and work in areas such as teaching, journalism, law, marketing, librarianship and management.

### How will I be assessed?

Examination + coursework.



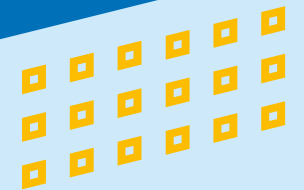
# Humanities

Humanities subjects give students the opportunity to learn more about the world in which we live. As a humanities student you will explore the ways in which people interact with each other and the many varied reasons behind events, beliefs, opinions and actions. You will learn to apply the moral, ethical, cultural and ideological approaches that bring together this fascinating group of subjects. You will need to keep up to date with current affairs and should have a keen interest in how the decisions made in the current moment draw on past events and help to shape the future.

Humanities subjects are highly regarded by universities as they give students the opportunity to develop skills in critical reading, analysis, evaluation and communication. These are skills that are much sought after in the workplace – particularly in areas such as the media, journalism, law, research, social work and education.

## Careers and Destinations

- Higher Education
- Teaching
- Journalism
- Public Services
- Researcher
- Government
- Politician
- Historian
- Care Professional
- Lawyer
- Social Worker
- Forensic Science



# Geography

## A LEVEL - 2 YEARS

Entry Requirements: 5 GCSEs at grade 4-9 (A\*-C) including English + Maths

### What will I study?

You will learn about how we shape the world we live in, and how we can manage the big issues facing humanity, such as population growth, climate change and increasing demand for limited resources such as water. You will learn about the geography of the local area, in the UK and around the world. You will explore new human environments such as world mega-cities, alongside dynamic physical environments such as those created by earthquakes and volcanoes. Fieldwork is an important part of the course, and you will have the opportunity to carry out your own study allowing you to develop a wide range of skills which are valued by employers and universities.

### How will I be assessed?

Examinations + fieldwork investigation.

### What can I do next?

Geography is an extremely versatile subject which is a valuable foundation for Science, Humanities and Arts subjects at Higher Education. Geography students are highly sought after both by universities and employers due to the unique range of skills they develop and their in depth understanding of the world. There are a wide range of university courses which value Geography as an A Level and the subject is particularly useful for students interested in further study, or work, in the areas of journalism, travel and tourism, civil engineering, surveying, environmental science, environmental law, economics, architecture, local and central government, the police, global development, scientific research and meteorology.

# Government & Politics

## A LEVEL - 2 YEARS

Entry Requirements: 5 GCSEs at grade 4-9 (A\*-C) including English + Maths

### What will I study?

Why do we have rules in Society? What is the point of the Government system? How does our system work and how does everyone play a part in it? Who holds the power to make things happen and create change? If you are interested in how our society functions then Government and Politics may be right up your street. You will learn about the way decisions made by government influence people's lives, and the way that people can participate in local, national and global politics.

### How will I be assessed?

Written examination.

### What can I do next?

As well as offering you insights into the ways in which the British and American political systems work, A Level Politics will help you to develop an enquiring and critical mind. The course provides an excellent background for careers in law, journalism, the caring professions, teaching and a range of management and business areas. It teaches you to think analytically and philosophically. As such it is well respected by universities and employers alike.



# Psychology

**A LEVEL - 2 YEARS**

Entry Requirements: 5 GCSEs at grade 4-9 (A\*-C) including English, Maths + Science

## What will I study?

Psychology is the scientific study of mind and behaviour, attempting to explain why people behave in the ways they do. You will discover and analyse what psychologists have found out about key issues such as the structure of memory, understanding social influence and the cause of mental illness. You will study major perspectives in the areas of biological and cognitive, behavioural psychology as well as research methods, data handling and statistics. You will also study clinical, health and criminal psychology.

## What can I do next?

Psychology is one of the fastest growing subjects in Higher Education. A Level Psychology is not a requirement for a degree but will give you a useful insight into the subject. Psychology graduates are highly sought after due to their unique mix of skills in literacy, numeracy and science. Psychology is also beneficial for work in marketing, education, nursing, advertising, social work, HR and public services.

## How will I be assessed?

Examination.

# History

**A LEVEL - 2 YEARS**

Entry Requirements: 5 GCSEs at grade 4-9 (A\*-C) including English + Maths

## What will I study?

You will study the French Revolution, arguably the most significant event in world history, looking in detail at the reasons for it, the main events of it and the events that followed it. You will also study British history between 1851 and 1974 and will learn how the British society we see today was formed including how it was influenced by, and further developed, the principles of the French Revolution.

## How will I be assessed?

Written examination + coursework.

## What can I do next?

History is an excellent subject for the study of a wide range of university courses including law, economics, business studies, philosophy, English, archaeology, politics and social sciences. If you choose to specialise in History there are a wide range of courses available leading to employment in all sorts of fields, including law, journalism, business, teaching and the museum and heritage sector.



# Religious Studies

**A LEVEL - 2 YEARS**

Entry Requirements: 5 GCSEs at grade 4-9 (A\*-C) including English + Maths

## What will I study?

Religion is a powerful force in our world, influencing the way people conduct their lives and shaping the way that people think. You will explore philosophical and ethical perspectives of belief, from faith, scientific, agnostic and atheist positions. You will also compare and contrast all major traditions; Islam, Christianity, Judaism, Hinduism and Buddhism.

## How will I be assessed?

Examination.

## What can I do next?

An A Level in Religious Studies is really useful for studying wider Humanities, English and Social Science subjects at university, such as history, sociology, politics, law, anthropology and philosophy. The course develops analytic, interpretation and argument skills. Also, having a contextual understanding of alternative world perspectives provides a solid grounding when it comes to interpreting wider academic theory and concepts. As such, these skills, and the wider understanding of moral issues, can be particularly useful for students keen to study medicine, caring and the media. Ultimately, having a deeper understanding of the world demonstrates an ability to be tolerant and empathetic to those within society, which is very attractive to prospective employers in the future.



# Sociology

**A LEVEL - 2 YEARS**

Entry Requirements: 5 GCSEs at grade 4-9 (A\*-C) including English, Maths + Science

## What will I study?

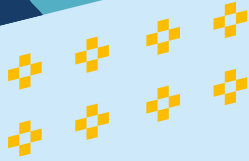
Sociology is the study of the individual and society and will appeal to students who are interested in investigating how our everyday lives are shaped by factors such as class, gender and ethnicity. Sociology will develop your research skills and your ability to weigh up evidence and arguments. You will look at human behaviour by studying social groups and the influences on their actions, ideas and beliefs. You will also look at the different methods used by sociologists to collect information and you will study the various theoretical perspectives that aim to explain why society is organised the way it is.

## How will I be assessed?

Examination.

## What can I do next?

A Level Sociology is a valuable subject for a wide range of careers and higher education courses. You may wish to look specifically at areas which involve an understanding of people and social relationships, such as journalism, health care, social work, education, the public services, marketing and management.



# Applied Psychology

**BTEC LEVEL 3 EXTENDED CERTIFICATE - 2 YEARS**

Entry Requirements: 5 GCSEs at grade 4-9 (A\*-C)  
including English, Maths + Science

## What will I study?

Psychology is the scientific study of mind and behaviour, attempting to explain why people behave in the ways they do. You will discover approaches in psychology including biological, social and cognitive explanations of behaviour. This course combines fascinating content with scientific rigour, statistical analysis and combines equally well with science or humanities subjects. You will study major perspectives in psychology and see how research has been applied to the areas of business, gender and criminological psychology. You will also look at the application of psychology to health and wellbeing with an emphasis on addiction, gambling and stress.

## How will I be assessed?

Examination + assignments.

## What can I do next?

Studying Psychology at Level 3 is not a requirement for a degree but will give you a useful insight into the subject. Psychology graduates are highly sought after due to their unique mix of skills in literacy, numeracy and science. Psychology is also beneficial for work in marketing, education, nursing and the health care sector, social work, HR and public services.

# Criminology

**WJEC LEVEL 3 DIPLOMA - 2 YEARS**

Entry Requirements: 5 GCSEs at grade 4-9 (A\*-C)  
including English + Maths

## What will I study?

Criminology is the study of crime and criminal behaviour. You will learn about different types of crime and how perceptions of crime may differ. You will also gain an understanding of why people commit crime and how the criminal justice system works. You will study real life situations and cases and apply criminological theories to evaluate the effectiveness of social control and criminal justice policies.

## What can I do next?

Studying Level 3 Criminology will help you gain access to a wide range of higher education courses, including Criminology, Psychology, Sociology and Law. The qualification also provides students with valuable skills and understanding that can lead to a career in a number of areas, such as journalism, law, social work, education and the public services.

## How will I be assessed?

Examination + controlled assessment.

