



Longley Park
SIXTH FORM

PROSPECTUS

2023/2024



[longleypark.ac.uk](https://www.longleypark.ac.uk)

WELCOME TO PROJECT YOU!

At Longley Park, we do more than simply get you through exams – we help you define your unique goals. Whether you are aiming for university, or are ready to train for a career, it is time to start working on you.



THE BEST PROJECT YOU WILL EVER WORK ON

CONTENTS

How to Find Us 06

Principal's Welcome 08

What we Offer 09

Why Study with Us? 10

Build Your Project You 12

Academic Tutorial Programme 14

UK Career Ready Programme 15

Additional Learning Support 17

Financial Support 18

Safeguarding 19

Our Wellbeing Space 20

Extended Project Qualification (EPQ) 21

Independent Learning Centre 23

Finding the Right Course for You 24

Introducing T Levels 26

Student Application Journey 28

Business 30

A Level - Business Studies **32**

Level 3 Diploma - Financial Studies **33**

BTEC Level 3 Extended Certificate - Business **34**

BTEC Level 3 Extended Diploma - Business **35**

BTEC Level 2 Certificate - Business Studies **36**

Information Technology & Computing 38

BTEC Level 3 Extended Certificate - Computing **40**

BTEC Level 3 Extended Certificate - Information Technology **41**

BTEC Level 3 Extended Diploma - Information Technology **42**

BTEC Level 2 Certificate - Information & Creative Technology **43**

Languages 44

A Level - Spanish **46**

Law 48

A Level - Law **50**

BTEC Level 3 Extended Certificate - Law **51**

Childcare & Education 52

T Level Technical Qualification - Education and Childcare:

Early Years Educator **54**

Cache Level 2 - Working in Early Years & Primary School Settings **55**

Creative Arts & Media 56

A Level - Art & Design - Fine Art **58**

A Level - Architecture, Interior & Product Design - 3D Design **59**

A Level - Media Studies **60**

A Level - Photography **63**

UAL Level 3 Extended Diploma - Art & Design **64**

UAL Level 3 Extended Diploma - Game Art & Design **66**

UAL Level 2 Diploma - Art & Design - Visual Arts
& Creative Media **67**

English 68

A Level - English Literature **70**

A Level - English Language **71**

Humanities 72

A Level - Geography **74**

Ascentis Level 2 Certificate - Humanities & Social Science **76**

A Level - Government & Politics **77**

A Level - History **78**

A Level - Psychology **79**

A Level - Philosophy, Ethics & Religion **80**

A Level - Sociology **82**

WJEC Level 3 Extended Diploma - Criminology **83**

Health & Social Care 84

BTEC Level 3 Extended Certificate - Health & Social Care **86**

BTEC Level 3 National Extended Diploma - Health & Social Care **87**

BTEC Level 2 Certificate - Health & Social Care **89**

Maths 90

A Level - Mathematics **92**

A Level - Further Mathematics **93**

Level 3 Certificate - Core Maths **95**

Science 96

A Level - Biology **98**

A Level - Chemistry **99**

A Level - Physics **100**

BTEC Level 3 Extended Diploma - Applied Science **101**

BTEC Level 3 Extended Certificate - Applied Science **102**

BTEC Level 2 Extended Certificate - Applied Science **104**

CTEC Level 3 - Engineering **105**

Sport 106

BTEC Level 3 National Diploma - Sport and Exercise Science **108**

BTEC Level 3 Extended Certificate - Sport and Exercise Science **109**

GCSEs, Functional Skills & ESOL 110

GCSE & Part Time ESOL, Functional Skills - English **112**

GCSE & Functional Skills - Maths **113**

GCSE - Biology **114**

Full course information is available on our website at

longleypark.ac.uk

Courses are subject to approval by awarding bodies and therefore are subject to change. Our course offer may vary depending on number of applications received.

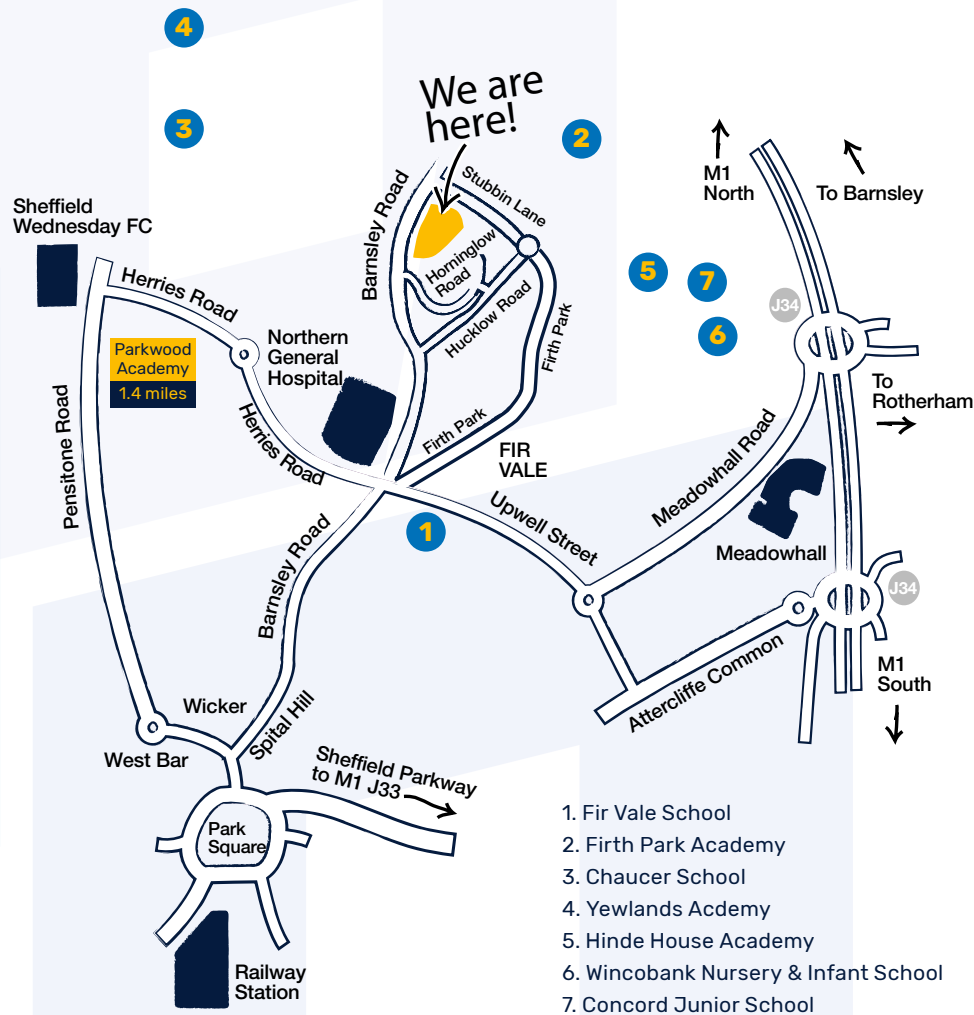
If you require this prospectus in a different format, for example in large text or braille, please contact us on **0114 262 5757**

HOW TO FIND US

Longley Park is on Barnsley Road, opposite Longley Park itself. There are fantastic bus links into the city centre, across Sheffield and to Meadowhall.

Travel information about services, discounts and concessions available to students attending Longley Park is available from Student Services.

For further information, please visit our website at www.longleypark.ac.uk



1. Fir Vale School
2. Firth Park Academy
3. Chaucer School
4. Yewlands Academy
5. Hinde House Academy
6. Wincobank Nursery & Infant School
7. Concord Junior School

DREAM BIG.
AIM HIGH.
REACH FURTHER.

WELCOME TO LONGLLEY PARK SIXTH FORM

As a Sixth Form, we are all about providing an amazing place for 16 to 19-year-olds to study, develop and succeed. We are a community of people from lots of different backgrounds. Here you can work with people who share your passion for your chosen subjects and take the opportunities to develop new skills and contribute to our ambitious, caring and vibrant community. Most importantly, it is a place to take control of your future, make your own decisions and shape your next steps.

At Longley Park we recognise the importance of choice and believe that your study programme should be designed around your abilities and aspirations. We are committed to providing a well-balanced and challenging curriculum for all students, both inside and outside of the classroom. We have courses for students joining us from a variety of different starting points. No matter what courses you choose to study, you will be joining part of our community over almost 1,200 students.

We believe that each student is an individual, is exceptional and should be valued. Our staff are passionate about your learning – they want you to be engaged by your subjects, develop your skills and to succeed. The information contained in this prospectus can only provide a glimpse into what life at Longley Park has to offer. Come to an open day, check out our website or give us a ring to arrange a visit and take your first step in planning your future. Your first step in Project You.



By choosing Longley Park as your next step, you are choosing a genuine Sixth Form experience. You will have more independence over your studies and take greater ownership of your studies. Our team will be there all the way to support and guide you when you need it. In return, we ask that you commit to your studies, work hard and embrace our college community.

Longley Park Sixth Form is an exciting mix of ideas, beliefs, cultures and languages – a place where you will be able to develop confidence, belong and thrive. Our team of staff will challenge you to achieve, be successful and be prepared for the wider world.

I look forward to meeting you and hope you choose Longley Park to be part of your future.

Jamie Davies
Executive Principal

WHAT WE OFFER

Excellent facilities to support your learning

Beyond the classroom you can access our Independent Learning Centre, Careers Hub, Learning Support Centre, Wellbeing Room, Gym and IT suites to get the very best sixth form experience.

An independent study culture

Our Independent Learning Centre gives you access to textbooks and online journals which you can use in our dedicated study spaces and seminar rooms anytime, any day of the week.

A broad and exciting curriculum

We offer a fantastic range of qualifications that you can blend to create a personalised study programme.

Highly qualified staff

All our teaching staff are experts in their subjects. They are highly skilled to give you the knowledge, understanding and skills you need to achieve.

A commitment to your wellbeing

We know learning cannot happen unless you are supported emotionally and physically. Our staff will support you every step of the way. Our team of specialist wellbeing practitioners, counsellors, and support teams will help you to prioritise your wellbeing to allow you to succeed.

Extensive enrichment and wider opportunities

Project You means personalising your experience to see that you can reach your own unique goals and have a fantastic experience along the way. You can access a huge range of wider opportunities to help you explore your own interests and talents, meeting new people along the way.

Expert careers advice

Work with our specialist careers team in our dedicated careers hub, Pathways, to support you in accessing your next steps, whether its university, further training or employment.

An atmosphere where everyone is valued

You will be part of an inclusive, respectful and richly diverse community which values each and every individual.

WHY STUDY WITH US?

98.5% Advanced Level Pass Rate overall

121 passes at A* and Distinction*

99% of Students went on to a Positive Destination

STAND OUT, meet others and explore new interests with our extensive range of **enrichment activities**.

Join our award winning **career ready programme**, which gives you the opportunity to **gain experience** in the working world as well as guest speakers attending the Sixth Form.

You'll get a **dedicated academic tutor** to support you throughout your studies, including a group tutorial and one to one support.

1200 students attend Longley Park, you'll meet lots of new people and make **new friends**.

A **dedicated wellbeing team** to help you when you need them.

Take advantage of our gym, join our **DofE team** or **sports team** to stay healthy.

OPEN DAYS

Saturday
15th October 2022

Thursday
8th December 2022

Thursday
19th January 2023

Also follow us on Instagram & Facebook or visit **longleypark.ac.uk** for extra dates and virtual open days.

What our students say about us...

"You really grow into your own person at Longley."
Areeba

"Life's too short to procrastinate. Your education is a passport to a better future."
Nenneaya

"I came to Longley Park as a kid who didn't know much about the outside world and left as a man ready to be a leader in the outside world."
Tyrone Yeboah
LP Alumni

"As a student I think that Longley is good way to start because they offer variety courses, support workshops and after sixth form clubs."
Amina



Message from our Alumni

Dr Steve Jones.

I attended Longley Park Sixth Form College in 2004-06, the first year it opened. I was able to study Psychology, Biology, Sport and Exercise Development and IT Practitioner. Being able to take these skills forward, to create friendships which I still hold today have been incredibly meaningful to who I am. Since attending Longley I have been able to study for a BSc in Psychology, before going on to an MSc in Applied Cognitive Neuroscience, both at Sheffield Hallam University. Following this I have been able to gain experience working in the NHS before applying for and then completing my Doctorate in Clinical Psychology at the University of Sheffield and now working as a Senior Clinical Psychologist at Sheffield Children's Hospital. Within this I have also been able to publish a book called ACT Made Yorkshire based upon the learning in my studies. All of this was set from a foundation at Longley Park and I look back fondly of my time there - I hope that one day, you will be able to say the same.

Message from our Alumni

Khalid Islam.

I studied for three years at Longley Park and these courses helped me substantially to be prepared what was coming at university level. Because I studied Aerospace engineering at Sheffield Hallam University, some of these courses that I studied at college played a vital role throughout the study of Aerospace engineering especially A level maths, BTEC Engineering and IT. Thanks to all the staffs at Longley Park for believing in me and making my dream come true. Their inspiration for teaching with great passion have now led me to do teaching course (PGCE in Mathematics). I think if someone like myself, who came from a very disadvantaged background could achieve that one never thought of, with a great support and guidance from the staff at Longley Park, I believe everyone can achieve their dreams.

BUILD YOUR PROJECT YOU

Project You is about more than just academic success. It is about exploring new opportunities, discovering interests and talents and developing key skills which will help you stand out from the crowd.

KEEP LEARNING



• Duke of Edinburgh



• Yoga



• Car Maintenance



• Chess Society



• Debating



• Art Therapy



• Mooting



• Film Society



• Creative Writing

MEET OTHERS



• Spanish



• Badminton



• Football



• Philosophy



• Table Tennis



• Creative Thinking

EXPLORE NEW INTERESTS & TALENTS



• Gym Sessions



• Bollywood Dancing



• HIT Training



• Book Club



• Weightlifting Club



• Stem Club



• Clubbercise

BE PART OF SOMETHING



• Student Council



• Longley Singers



• LGBTQand



• Gamers Group



• Roleplay Workshop



• Gardening Society

OUR TUTORIAL PROGRAMME

To make Project You a success, you will work closely with your tutor for support and guidance during your time with us. Your tutorial programme has two elements. Each week you will have a group tutorial, and alongside this you will have an independent support session with your academic tutor.

The Group Tutorial

This weekly session focuses on three key themes:

Health and Wellbeing

- Preparing for the future
- Healthy Lifestyles
- Setting Goals

Healthy Relationships

- Developing Self-Awareness and staying safe
- Ethics and Community Values
- Equality and Diversity

Living in the Wider World

- Careers guidance with labour market information
- Progression research and application support
- Life at university or in employment
- Budgeting and Finance

Independent Support Session

This weekly session includes regular one-to-one meetings with your tutor to support you in your progress with us. In addition to this, you will also be directed to use this time to complete different tasks to develop your wider skills and progression plans. You will be able to request a meeting with your tutor whenever you require it, and your tutor will direct you to additional support where appropriate.

Progression

We strive to ensure that all students have a positive destination beyond our sixth form. Students receive bespoke guidance when researching opportunities and application processes. Although UCAS guidance is central to our support as the majority of our students progress to University, we also offer a full programme of support for apprenticeships, traineeships and employment pathways including advice and guidance from qualified careers professionals.

Wider Engagement

Building your social and cultural awareness will help you develop as an individual. We have established links with universities and employers; engaging with them will allow you to make informed decisions about your future plans. We invite speakers, organise conferences and Q&A panels, and run national and international trips (Paris - London - Rome - Berlin - New York). Beyond this we offer you cultural opportunities whenever we can (Museums - Galleries - Theatre).

UK CAREER READY PROGRAMME

The Career Ready is a unique career development Programme offered across the UK, however Longley Park Sixth Form is the only provider of this amazing programme in South Yorkshire.

Each programme has its own theme and is mapped to enable young people to develop the skills, confidence, and aspirations needed for future career success. We offer two themes, Business & Law and Creative Media & IT and invite applicants from these subjects to apply. The Programme helps students to overcome barriers in education and employment, whose talents often go overlooked and undiscovered.

As part of the Career Ready you will receive all of the following:

- Access to different businesses and business people who will provide you with an awareness of a wide range of careers, companies and sectors, some of which you won't have come across before. This can help you plan your future career path.

- A Business mentor who will meet with you and support you to raise your career awareness, improve your confidence, develop your problem solving skills, increase your research skills, develop your network and expose you to a real work environment.

- Masterclasses. You will attend a range of informative Masterclasses delivered by a professional, this will take place either at college or hosted at a workplace. The sessions are based on a range of topics such as career skills, industry sectors and routes into employment, how to develop yourself as a person, and communication/networking skills.

- Workplace visits / Enterprise activities. These workplace visits often include a masterclass or enterprise activities, information sessions regarding a range of career paths and behind the scene office tours.

- A paid internship which provides invaluable experience of working and developing relevant skills and learning about workplace cultures. This gives students a chance to become a valued team member, put the skills you've learned into practice and find out what work is really all about.

What do we want from you?

Dedication, conscientiousness, full participation in all aspects of the career ready programme, good organisational skills and a willingness to to learn and develop.

Applications will be offered to suitable candidates at the start of the new academic year.



WE'RE NOT
HERE TO HOLD
YOUR HAND.
BUT WE'LL
SUPPORT YOU
EVERY STEP
OF THE WAY.

ADDITIONAL LEARNING SUPPORT



Here at Longley Park Sixth Form, we have an experienced and dedicated learning support team that treats every student as an individual. Meaning you get the support you need.

We can support students who have a range of needs, including:

- Dyslexia
- Dyspraxia
- Autism or Asperger Syndrome
- ADHD
- Learning difficulties or disabilities
- Sensory impairments
- Physical difficulties
- Medical conditions

"I've had lots of help from the support team, thanks to them my spelling and grammar has improved and I've been able to grow massively as a person."

Our team will work with you to find your individual strengths and discuss any parts of your sixth form experience that you might find difficult. We will provide you with the suitable support to help you excel and meet the demands of your chosen course. This might include support in the classroom or getting around the building, individual study sessions or access to drop-in sessions.

If you have an EHC Plan, you will be supported in your transition to us. Support will be planned with you, your parents/carers and any other relevant professionals. You will be supported to achieve the agreed outcomes on your EHC Plan alongside your academic progress.

We have more details of the specific support you are entitled to in our Local Offer. If you would like to find out more about the support we can offer, please contact the Learning Support Team on:

Email: learningsupport@longleypark.ac.uk



FINANCIAL SUPPORT

We will do all we can to support you throughout your time here. This may involve working to identify any barriers to learning and providing you with the best support to help you overcome them.

Making sure you know about the financial support available to you will help get you off on the right foot.

Free for all students:

- Your courses • Textbooks • Specialist equipment
- If you're aged 16-18, in full-time education and living in South Yorkshire, you're entitled to a student travel pass

You could be entitled to financial support: Longley Park Guaranteed Bursary

If you're aged 16-18 and currently receiving Income Support/Universal Credit, Personal Independence Payment and Employment Support Allowance, are in care or are leaving care, you could be eligible for a bursary of up to £1,200 per year.

Longley Park Bursary Fund

If your household income is less than £16,190, you could be eligible for financial support from the Bursary Fund to help with:

- Travel • Printing costs • Trips • Emergency situations

Further Education Free Meals

You may be entitled to free meals, you can apply via the Bursary Fund application form.

Care to Learn

If you're a young parent (aged under 20) you can apply for Care to Learn for help with your childcare costs.

You will receive a guide to the financial support available at Longley Park in your Student Finance Pack that will be sent out to you before you enrol.

Any queries?

You'll find the Student Finance Office in the Plaza.

Email: studentfinance@longleypark.ac.uk

SAFEGUARDING



Be Safe and Feel Safe.

Your safety and wellbeing is a priority at all times at Longley Park. If you have any personal concerns or worries about a friend, talk to a member of staff. Whatever your concerns and needs, we want to hear them and will work with you to address them. Support includes wellbeing, counselling and referral to external agencies.

The Safeguarding Team at Longley Park are:

Yasmin Celik

Assistant Principal, Behaviour and Welfare,
Designated Safeguarding Lead

Rae Nichols

Student Experience and Destinations

Vicky Bark

Student Support Manager

Catherine O'Connor

Student Support Manager

Their offices are designated safeguarding points where you can go to discuss concerns you may have. Please remember any member of staff is there to help you if you have any worries.

OUR WELLBEING SPACE

At Longley Park, we have a dedicated Wellbeing Space where you can access wellbeing support from our specialist team whenever you need it. In this space, you can access the drop-in service, 1-1 support sessions and if needed, be referred for further support with a counsellor or therapist.

You might use this space if...

- You would like support with the emotional side of adjusting to sixth form life
- There are issues which are affecting your studies
- Things are happening in your life outside of Longley Park and you would like to learn some strategies to deal with them



- You are dealing with a specific mental health issue such as anxiety or depression
- You're having a bad day and would just like someone to talk to. We all need someone to talk to sometimes.

It is normal and natural to experience things in our lives which mean we need some extra support.

Feeling healthy and happy at Longley Park is integral to your success in your studies.

The Wellbeing Space is in room G05 towards the bottom of the Art Corridor on the ground floor.

The whole Sixth Form is committed to meeting the needs of young carers so that they can attend and enjoy Sixth Form in the same way as other students and achieve their potential. We have an appointed designated Young Carers lead member of staff. Students are able to access support through our Wellbeing space. The Wellbeing Team also have a referral system in place to Sheffield Young Carers who provide support to young carers and their families.

EXTENDED PROJECT QUALIFICATION (EPQ) GO BEYOND!

The EPQ is a Level 3, research driven course that high achieving students take alongside their main areas of study. It is a one year course that is usually taken spanning the first and second year of study.

Top universities are really keen to see students achieve the qualification, which is awarded at A Level standard, between grades A* to E, as it demonstrates commitment and a development of crucial academic skills and gives you experience of a university style education.

Skills include:

- Research technique
- Critical thinking and argument technique
- Time management
- Self-reflection
- Referencing
- Essay structure and source engagement
- Independent study and working with a supervisor
- Academic presentation

Students must complete 120 hours of work over the duration of the qualification and can choose any topic they are passionate about. Many opt to write a 5,000 word essay, however some choose to create an artefact and write a shorter essay alongside it.

WHY CHOOSE THE EPQ?

Entirely student led; you decide on your project.



INDEPENDENT LEARNING CENTRE

At Longley Park we have our own purpose built Independent Learning Centre that provides the perfect environment for you to study. Our space has been created to emulate a university style learning environment and has study areas designed to accommodate all learning needs.



The ILC staff work closely with teaching staff and academic tutors to provide the research tools and skills necessary to support teaching and independent study.

Our services include:

- A wide range of hard copy resources, including books, journals, magazines and newspapers
- Access to online resources, such as e-books, online journals and newspapers and searchable databases
- A large number of computers available for you to use in your free time
- Group and individual study spaces
- A silent study area
- Bookable seminar rooms for group study
- Printing, photocopying and scanning services
- Dedicated staff available to give help and advice

The ILC is open 5 days a week.

FINDING THE RIGHT COURSE FOR YOU



QUALIFICATION	INFO
Level 3 Advanced Programme	Choose a Core or Mixed Programme with 4th subject/EPQ OR Core Maths
Level 3 Mixed Programme	Choose from a combination of 3 A Levels or equivalent
Level 3 Core Programme	Choose 1 course
Level 2 Foundation Programme	Choose 1 course
Level 2 Entry Programme	Choose 1 course

ENTRY	COURSES																																						
5 GCSEs grade 6 or above inc. English and Maths	EPQ – Extended Project Qualification, Core Maths or all Core and Mixed Courses as below																																						
5 GCSEs grade 4 or above inc. English and Maths	<table> <tr> <td>A Levels</td><td>Applied Generals</td></tr> <tr> <td>Architecture</td><td>Applied Science</td></tr> <tr> <td>Interior & Product Design</td><td>Business</td></tr> <tr> <td>Art and Design</td><td>Care & Education</td></tr> <tr> <td>Biology</td><td>Early Years, Childcare and Education</td></tr> <tr> <td>Business Studies</td><td>Computing</td></tr> <tr> <td>Chemistry</td><td>Criminology</td></tr> <tr> <td>English Language</td><td>Engineering</td></tr> <tr> <td>English Literature</td><td></td></tr> <tr> <td>Further Maths</td><td></td></tr> <tr> <td>Government & Politics</td><td>Financial Studies</td></tr> <tr> <td>History</td><td>Health & Social Care</td></tr> <tr> <td>Law</td><td>Information Technology</td></tr> <tr> <td>Maths</td><td>Law</td></tr> <tr> <td>Photography</td><td>Sports & Exercise Science</td></tr> <tr> <td>Physics</td><td>Sport, Fitness & Personal Training</td></tr> <tr> <td>Psychology</td><td></td></tr> <tr> <td>Sociology</td><td></td></tr> <tr> <td>Spanish</td><td></td></tr> </table>	A Levels	Applied Generals	Architecture	Applied Science	Interior & Product Design	Business	Art and Design	Care & Education	Biology	Early Years, Childcare and Education	Business Studies	Computing	Chemistry	Criminology	English Language	Engineering	English Literature		Further Maths		Government & Politics	Financial Studies	History	Health & Social Care	Law	Information Technology	Maths	Law	Photography	Sports & Exercise Science	Physics	Sport, Fitness & Personal Training	Psychology		Sociology		Spanish	
A Levels	Applied Generals																																						
Architecture	Applied Science																																						
Interior & Product Design	Business																																						
Art and Design	Care & Education																																						
Biology	Early Years, Childcare and Education																																						
Business Studies	Computing																																						
Chemistry	Criminology																																						
English Language	Engineering																																						
English Literature																																							
Further Maths																																							
Government & Politics	Financial Studies																																						
History	Health & Social Care																																						
Law	Information Technology																																						
Maths	Law																																						
Photography	Sports & Exercise Science																																						
Physics	Sport, Fitness & Personal Training																																						
Psychology																																							
Sociology																																							
Spanish																																							
4 GCSEs grade 4 or above inc. English and Maths	Applied Science, Art & Design - Visual Arts & Creative Media, Business, Childcare & Education, Digital Media, Game Art & Design, Health & Social Care, IT																																						
2 GCSEs grade 3 or above	Applied Science Business Studies Health & Social Care Information & Creative Technology Visual Arts & Creative Media Working in Early Years & Primary Setting Humanities (requires 4 in English Language) Social Science (requires 4 in English Language)																																						
1 GCSE grade 3 or above and 2 GCSEs grade 2	Applied Science Business Studies Health & Social Care Information & Creative Technology Visual Arts & Creative Media Working in Early Years & Primary Setting																																						

INTRODUCING T LEVELS AT LONGLY PARK

Designed with businesses and employers, T Levels are two-year, technical qualifications designed to give students the skills that industry needs. They bring classroom learning and an extended industry placement together.

T Levels are equivalent to 3 A Levels and other Level 3 vocational programmes but are structured slightly differently into three main parts.

- **Technical qualification (TQ)** is the main, classroom-based element. Students will learn about their chosen sectors through a curriculum designed with employers.

- **Industry placement** runs for a minimum of 315 hours (45 days) overall and will give students practical insights into their sector and an opportunity to embed the knowledge and skills learned in the classroom.

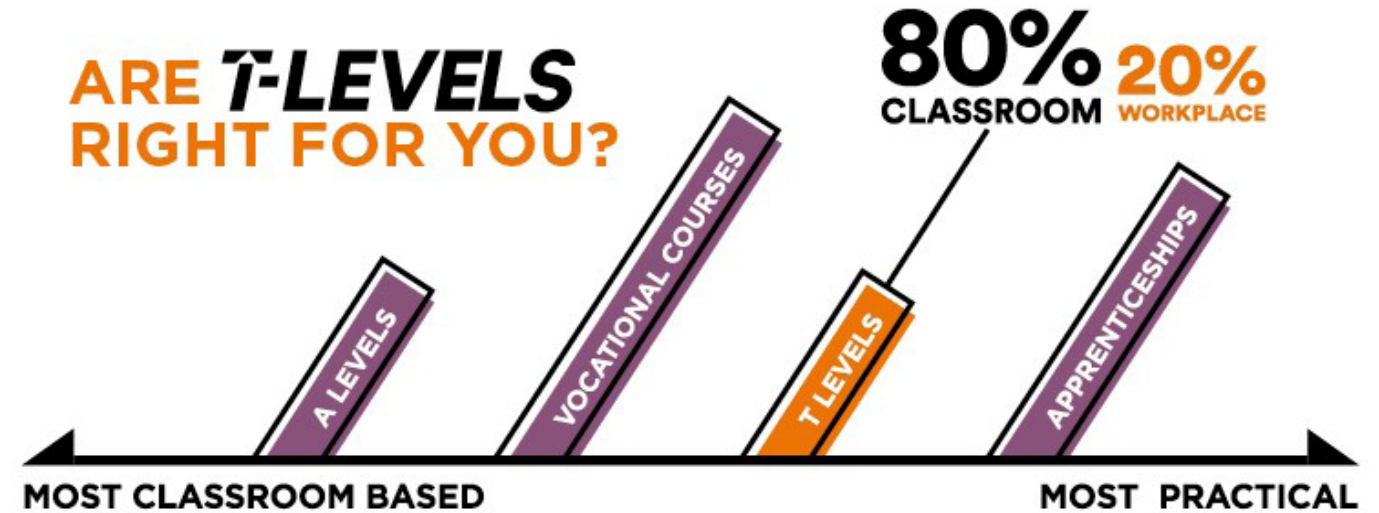
- **English, maths and digital** provision is also built into the classroom-based element of the T Level, meaning students will be given a solid foundation of transferable skills.

Students who achieve a T Level will get a nationally recognised certificate which employers will use as evidence in their recruitment.

What can I do with a T Level qualification?

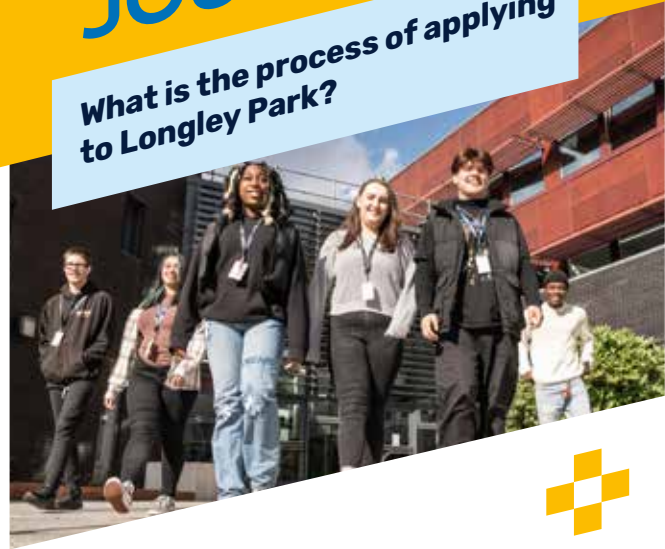
When you have completed a T Level course, you will be able to choose between moving into:

- A skilled occupation.
- Higher or degree level apprenticeships.
- Further study including Higher Technical Qualifications or Higher Education.



STUDENT APPLICATION JOURNEY

What is the process of applying to Longley Park?



YEAR 11

Start thinking about making an application



OPEN DAY

Saturday
15th October

Make an application



Interviews start



Interviews continue



OPEN DAY

Thursday
19th January

Offers sent out via
Sheffield Progress
and post



OPEN DAY

Thursday
8th December



GCSE RESULTS DAY



Offers sent out
via Sheffield
Progress
and post



TASTER DAY
NEXT STEP
LONGLEY



ENROLMENT



JOIN



Longley Park
SIXTH FORM



Business qualifications are highly desired by many employers as these qualifications will give you the skills and knowledge to be successful and either to progress on to industry or to university.

You have the opportunity to gain an interesting insight into the ever changing world of businesses and an understanding of how you can be a part of the growth of this field. As a Business student, you will also get the fantastic opportunity to be part of the Career Ready programme. Turn to page 14 for more information.

Skills and Qualities

- Creative thinking
- Precision
- Problem solving
- Teamwork
- Project management
- Client focused
- Presentation skills

Career Paths

- Business analyst
- Customer Service associate
- Data analyst
- Paralegal
- Solicitor or barrister
- Sales advisor
- Actuary
- Business development manager
- Project Manager
- Events manager

Labour Market Info

South Yorkshire is a growing location in the UK for business, professional and financial service companies. Sheffield City Region is home to 68,000 business employing 700,000 people.

Sheffield has plans has plans for investment in growth areas (e.g. digital), with opportunities to attract more big name employers to the city and support packages for people considering starting their own business.

BUSINESS

BUSINESS

A LEVEL - 2 YEARS

Entry Requirements: 5 GCSEs at grade 4-9 including English and Maths

What will I study?

You will learn about what businesses do and how they do it, what factors are likely to make businesses successful, and practical information about the legal, financial and marketing requirements of the business world. In the first year you will look at how to plan and finance a business and techniques for successful management including Human Resources. In the second year you will study strategies for business success, the global environment in which businesses operate and how they manage change.

How will I be assessed?

Written examinations.

What can I do next?

A Level Business Studies can provide a stepping stone into another field, perhaps onto a totally unrelated course. If you want to specialise, you could choose further study in business studies, marketing or accounting. The skills and knowledge developed by the course are highly valued by employers, and would be useful for progression to management training courses in banking, other financial institutions and retailing.

"If you're looking for a fun and engaging courses, I would recommend business."

Jessica - Springs Academy

FINANCIAL STUDIES

LEVEL 3 DIPLOMA 2 YEARS

Entry Requirements: 4 GCSEs at grade 4-9 including English and Maths

EQUIVALENT TO 1 A LEVEL

What will I study?

This London Institute of Banking and Finance qualification has been developed with the input of leading firms from the financial sector to ensure it gives you the essential and most up-to-date knowledge. You will look at a range of topics such as short term to long term financial needs and investigating the personal financial life cycle recommending suitable financial products to meet individual needs. You will also look at the impact of debt on individuals and explore the ethical and sustainable nature of the financial services industry.

How will I be assessed?

Written examinations.

What can I do next?

You can advance onto university courses in Accounting, Banking, Accounting, Finance, Investment and other related subjects. Alternatively, the transferable skills gained throughout the course can make you very employable in a number of different business areas.

Please note: Equivalent to 1 A Level, must choose 2 other courses of study.

"I always receive great feedback on ways to improve and further develop my work. I have also managed to develop an overall understanding on how to manage my own finances better."

Ali - Outwood Academy

BUSINESS

BTEC LEVEL 3 EXTENDED CERTIFICATE - 2 YEARS

Entry Requirements: 4 GCSEs at grade 4-9 including English and Maths

EQUIVALENT TO 1 A LEVEL

What will I study?

You will study different types of businesses and how they operate. This includes developing a marketing campaign, personal and business finance, recruitment and selection process and investigating customer service.

How will I be assessed?

Coursework and examinations.

What can I do next?

A variety of options are available to you following study of Business. The skills and knowledge developed by the course would be useful for progression to management training courses in Banking, other financial institutions and Retailing. If you want to go on to higher education there are degree courses available in Business Studies, Marketing and Accounting.

"I really like this course because it helps me with my future and it teaches me life skills that I didn't know I needed."

Abdifitah - Firth Park Academy

BUSINESS

BTEC LEVEL 3 EXTENDED DIPLOMA - 2 YEARS

Entry Requirements: 4 GCSEs at grade 4-9 including English and Maths

EQUIVALENT TO 3 A LEVELS

What will I study?

You will study different types of businesses and how they operate. This will include developing a marketing campaign and digital marketing, finance, principles of management and decision making, managing an event, customer service, human resources and international business.

How will I be assessed?

Examinations and assignments.

What can I do next?

A variety of options are available to you following study of Business. The skills and knowledge developed by the course would be useful for progression to Management Training courses in Banking, other financial institutions and Retailing. If you want to go on to higher education there are degree courses available in Business Studies, Marketing and Accounting.

"Amazing workspace with amazing teachers who are determined to ensure their students are ready for any exam or coursework."

Ismaeel - Fir Vale School

BUSINESS

BTEC LEVEL 2 CERTIFICATE - 1 YEAR

Entry Requirements: At least 2 Grade 3s at GCSE

What will I study?

You will gain a good knowledge of business in general with a particular focus on key areas such as selling skills and entrepreneurial skills. The course covers different types of businesses, how to provide excellent customer service and what is involved in running a business. Projects and assignments are based on realistic workplace situations so you get a real insight into the kind of jobs and career routes that are available. In addition to the main programme, you will complete a BTEC Workskills qualification.

How will I be assessed?

Examinations and assignments.

What can I do next?

Students from this course have gone on to study BTEC qualifications in Business and Business Finance at Level 3 or a combination of A Levels and BTEC Subsidiary Diplomas. Many of them have then gone on to university to develop the skills to secure a job in industry or start up their own business.

"This course has improved my communication skills greatly and it has broadened my horizons a lot. I want to be my own boss and I truly believe that this course can make my dream a reality."

Hussein - Sheffield College

Information Technology and Computing qualifications are highly sought after by many employers.

These qualifications will not only give you the practical skills and knowledge needed but will allow you to gain the analytical skills to be successful, either to progress into industry or on to university. You have the chance to design and create working products that can affect our everyday life. We have a variety of BTEC qualifications at all levels to suit your desired progression route.

Skills and Qualities

- Digital skills
- Problem solving
- Communication
- Precision
- Project management

Career Paths

- Associate software developer
- Social media executive
- Head of digital acquisition
- Ethical Hacker
- Data analyst
- Website operational designer
- Software programmer
- Fiber network planner
- Application support specialist
- ICT technician

Labour Market Info

Engineering and technician roles are in high demand in the UK. 124,000 needed each year.

Advanced engineering urgently needs young people. The creative and digital sectors have grown faster in the Sheffield City Region than anywhere else in the UK.

INFORMATION TECHNOLOGY AND COMPUTING

COMPUTING

BTEC LEVEL 3 EXTENDED CERTIFICATE - 2 YEARS

Entry Requirements: 4 GCSEs at grade 4-9
including English and Maths

EQUIVALENT TO 1 A LEVEL

What will I study?

Alongside core units in communication and employability and computer systems, this course is designed specifically for those students interested in computing rather than ICT in general. Additional units of study on this pathway will include a range from databases, programming, networking and mathematical concepts.

How will I be assessed?

Examinations and assignments.

What can I do next?

Students from this course will go on to university to study computing, e-Business, IT for practitioners and software engineering. The course develops valuable skills for other higher level courses and employment.

"This course is taught in a
engaging way that supports
effective and insightful
learning."

Abdullah - Fir Vale School

INFORMATION TECHNOLOGY

BTEC LEVEL 3 EXTENDED CERTIFICATE - 2 YEARS

Entry Requirements: 4 GCSEs at grade 4-9
including English and Maths

EQUIVALENT TO 1 A LEVEL

What will I study?

You will improve your knowledge and practical skills in IT, including web design and e-commerce, data communications, expert systems and computing, social media for businesses, information systems (databases). You'll find out about how computer systems work and learn how to use different applications. Assignments are based on workplace situations so you will get a real insight into the careers available in IT and what it is like to work in industry.

How will I be assessed?

Examinations and assignments.

What can I do next?

Students from this course have gone on to university to study computing, e-Business, IT for practitioners and software engineering. The course develops valuable skills for other higher level courses and employment.

"I am enjoying the Social
Media Unit as it links towards
business and the combination
of the two, go hand in hand."

Abdullah - Fir Vale School

INFORMATION TECHNOLOGY



"The sixth form provides students with quality teaching and a perfect environment in which to study."
Zimran - Hillsborough College

BTEC LEVEL 3 EXTENDED DIPLOMA - 2 YEARS

Entry Requirements: 4 GCSEs at grade 4-9 including English and Maths

EQUIVALENT TO 3 A LEVELS

What will I study?

You will develop knowledge and practical skills in the field of information and communications technology, including web design and e-commerce, data communications, expert systems and computing, social media for businesses, information systems (Databases), programming, cyber security and incident management, IT services delivery, IT project management, computer game development digital 2D and 3D graphics and digital animation and effects. You will complete practical projects and assignments based on realistic workplace situations and find out about career routes in IT.

How will I be assessed?

Examinations and assignments.

What can I do next?

Students from this course have gone on to university to study information technology management, business information technology, computer and information security, software engineering and network management and design. Some go directly into employment with training.

INFORMATION & CREATIVE TECHNOLOGY



BTEC LEVEL 2 CERTIFICATE - 1 YEAR

Entry Requirements: At least 2 Grade 3s at GCSE

What will I study?

You will learn about computer and information systems, web design, working in the IT industry, database and communications technology. You will learn by completing projects and assignments that are based on realistic workplace situations and find out about jobs in the IT sector. Students will have access to the latest in IT resources, both for lessons and for private study. In addition to the main programme, you will complete a BTEC Work skills qualification.

How will I be assessed?

Examinations and assignments.

What can I do next?

Students from this course have gone on to study the Level 3 Extended Diploma in IT or a combination of A Levels and Applied Generals. Others have chosen to follow an Apprenticeship route.

Studying languages really does expand your horizons.

You will find out about the culture and lifestyle of other countries where the language is spoken and being fluent in a language is a huge advantage if you want to travel. In our increasingly global society, language skills are also very much in demand when it comes to careers. Employers in a wide range of sectors are keen to recruit people who can communicate confidently with partners and clients overseas.

As well as learning about other countries, studying a foreign language will improve your communication in general as you find out about how languages work. You will also get a better understanding of English vocabulary and grammar.

Skills and Qualities

- Adaptability
- Communication
- Critical thinking
- Independence
- Problem solving
- Attention to detail

Career Paths

- Business services
- Charity work
- Engineering
- Media
- Museums and libraries
- Civil Service
- Teaching
- Tourism sector

Labour Market Info

In a 'global economy', the ability to speak more than one language and knowledge of different cultures can be very useful in many different job sectors.

LANGUAGES

SPANISH



What will I study?

You will develop the ability to communicate confidently in written and spoken Spanish with a high level of grammatical accuracy. The topics studied will build on your GCSE and move you towards speaking Spanish fluently and cover:

- Education and employment in Spain and the Spanish speaking world
- Family life in Spanish culture
- Literature and film of Spain
- Media
- Equality and Diversity in the Spanish speaking world

A LEVEL - 2 YEARS

Entry Requirements: 5 GCSEs at grade 4-9 including English and Maths and Spanish. Students who have not studied GCSE but have a high level of competence in Spanish will be considered.

You will work in a supportive learning environment where small group tasks build your confidence and teaching staff provide all the help and encouragement you need to excel. You will have dedicated time each week to practice your conversations skills with a fluent speaker.

How will I be assessed?

Examinations. Assessments will include oral, listening, reading and translation and writing.

What can I do next?

There are over 400 million speakers across the world, so studying Spanish language is an excellent way of enhancing your international career prospects. You will also develop linguistic and reasoning skills that are important for any academic route. In addition to studying Languages at university, A Level Spanish is also an asset for degrees in Law, Marketing, PR, Teaching, Journalism and Communications.



A Law qualification is highly desired by many employers as this qualification will give you the skills and knowledge to be successful, either to progress in to employment or onto university.

You have the opportunity to gain an interesting insight into the ever changing world of Law by studying a variety of subjects related to the current legal system.

Skills and Qualities

- Creative thinking
- Precision
- Problem solving
- Teamwork
- Client focused
- Presentation skills
- Communication
- Organised

Career Paths

- Solicitor
- Barrister
- Journalism
- Public relations
- Teaching
- Mediator
- Chartered Legal Executive
- Police
- Data scientist

Labour Market Info

The Legal profession is a growing within the South Yorkshire region and within the UK at an astounding rate.

There are many opportunities to work this sector that have clear links to public services, police, probation services and other allied vocations.

LAW

LAW



A LEVEL - 2 YEARS

Entry Requirements: 5 GCSEs at grade 4-9
Including English and Maths

Optional Topic

Law of contract. We will look at what makes a contract legally binding, what can and cannot be put into a contract and what rights you have when a contract is breached.

OR

Human rights. This topic allows us to delve deeper into what we actually mean by human rights both within the UK and internationally.

How will I be assessed?

Examinations and coursework.

What can I do next?

If you are interested in law your next steps should be to look at how you can become more familiar with the law around you.

Lots of legal professionals and legal academics use Twitter to discuss the changes and topic stories surrounding law and to discuss the legal profession. It is a great way to get an insight into a possible career in law. Are commendation to get you started on Twitter is The Secret Barrister [@BarristerSecret](#) and CrimeLine [@CrimeLineLaw](#).

What will I study?

The nature of law and the English legal system.

This topic explores the fundamental values of the English legal system.

Criminal law. This is a topic that has an entire section on Netflix dedicated to it! A-Level law will provide you with an in-depth understanding of how a person is found criminally liable for their actions and will teach you how this is proven in court.

Tort. Have you had a slip, trip or fall that wasn't your fault!? We've all seen these adverts on the T V, but this topic will give you an understanding of how it can be proven, legally, that someone is liable for losses caused by negligent acts and what the repercussions of breaching a duty of care can be.

LAW



"Law has opened up many opportunities such as work experience, court trips, mock trials and trips to Parliament."
Katie - Bradfield School

BTEC LEVEL 3 EXTENDED CERTIFICATE - 2 YEARS

Entry Requirements: 5 GCSEs at grade 4-9
including English and Maths

EQUIVALENT TO 1 A LEVEL

What will I study?

You will find out about the English legal system and how law influences our daily lives. Assignments are designed to give you a real sense of what it is like to work in the legal professions and visits to courts in session and discussions with guest speakers will be part of the course. The skills you will develop on the course, such as being able to see both sides of an argument, effective research skills and solving complex legal problems will be of value to you in other areas of life.

How will I be assessed?

Examinations and coursework.

What can I do next?

You may go on to study Law at university with a view to becoming qualified as a Solicitor or Barrister. Law also provides a good basis for further study of any subject at a higher level, and is valued by employers in a range of areas such as journalism, public relations, teaching and a range of management and business areas.

We have high expectations for all of our students and provide a stimulating learning environment that blends practical skills with theory.

We will help you achieve the best grades and will work closely with you to ensure you fulfil your potential. You will have the opportunity to attend different placements in order to build your practical skills and apply the lesson based theory. All of our recent Year 2 leavers have left Longley Park either with a place at university or with the offer of paid employment from their placement providers. A positive outcome for all.

Skills and Qualities

- Calm under pressure
- Professional and caring Communication
- Team working
- Decision making
- Professionalism
- Respect
- Problem solving

Labour Market Info

11% of employment in South Yorkshire is in education. That is around 76000 jobs.

Career Paths

- Nursery teacher / assistant
- Childcare

CHILDCARE AND EDUCATION

T LEVEL COURSES

An exciting opportunity for September 2023 – the T Level in **Education and childcare: Early Years Educator**.

T-LEVELS

What will I study?

This Level 3 Technical qualification is split into 2 components.

1 The Core component will build knowledge and underpinning concepts, theories and principles as well as core skills for the education and childcare sector. You will study a variety of elements including supporting education, safeguarding, behaviour, child development and special educational needs and disabilities. You will develop core skills including communicating to engage children, assessing children's progress and managing and assessing risk.

T LEVEL TECHNICAL QUALIFICATION IN EDUCATION AND CHILDCARE: EARLY YEARS EDUCATOR
Entry Requirements: 4 GCSEs at grade 4-9 including English and Maths

2 The Occupational Specialism component will develop your knowledge, skills and understanding of supporting and promoting play, developing relationships with children, planning, providing and reviewing care and working in partnership with colleagues, parents and other professionals.

You will complete 750 hours of industry placement across the 2 year course to develop the competencies required to work as a practitioner in early years settings.

How will I be assessed?

For the core component you will complete 2 written exam papers and an Employer-Set project. For the occupational specialism component you will complete several synoptic assignments.

What can I do next?

Students who achieve this full qualification could progress into employment as an early years practitioner or educator, pre-school worker, worker in community nurseries or nanny, move to higher education or complete an apprenticeship.

WORKING IN EARLY YEARS & PRIMARY SCHOOL SETTINGS



"This course is challenging but very enjoyable. I have developed more awareness around the subject."
Sara - King Egbert School

CACHE LEVEL 2 - 1 YEAR

Entry Requirements: At least 2 Grade 3s at GCSE

What will I study?

This qualification has been designed to support learners as they develop their knowledge, understanding and skills when caring for and supporting the learning and development of children aged 0 to 11 years 11 months. You will learn about children at different stages in their growth and development, how to care for and educate them and how to work with parents, carers and other professionals. This includes communication, positive behaviour, safeguarding and welfare, health and safety and creating positive environments for children and young people. This is a work-related course so work placements are a key part of your study. You will take part in placements working with children of different ages in a variety of settings.

How will I be assessed?

Assessment will be through assignments, external short answer examination and you will also be assessed on your work placement.

What can I do next?

The Certificate trains you to work in a job as an assistant in settings such as nursery assistant, crèche worker, childminder assistant. Students from this course have also gone on to study the CACHE Level 3 Diploma in Childcare and Education / Early Years Educator, Supporting Teaching and Learning, Children and Young people's Workforce and Health and Social Care.

We are always amazed by the high standard of creative work our students produce.

Our ethos is to help you become more independent and confident when expressing your creativity. There are some amazing opportunities for you to get involved in. Previous years have seen our students exhibit their work to enhance taking part in live projects to produce the local environment and produce professional video work for clients. We'll treat you as an adult and expect you to behave as professionals working in the creative industry. We'll help you to achieve the best grades. In return, we expect excellent attendance and punctuality and the willingness to engage in new and exciting ways of working.

Skills and Qualities

- Creative thinking
- Decision making
- Reflection
- Precision
- Client focused
- Time management

Career Paths

- Photographer
- Film/video producer
- Visual effects
- Animator
- Web designer
- Games designer
- Marketing

Labour Market Info

The creative and digital sectors have grown faster in the Sheffield City Region than anywhere else in the UK. This is thanks to competitive property and staff costs, a supportive business environment and a large pool of well qualified staff. The sector employs over 35,000 people and the region benefits from the two universities in terms of research expertise and talented graduates.

CREATIVE ARTS AND MEDIA

ART & DESIGN - FINE ART



"What I enjoyed the most
about art is the liberty we
have to express ourselves."
Lola - High Storrs School

A LEVEL - 2 YEARS

Entry Requirements: 5 GCSEs at grade 4-9
including English and Maths

What will I study?

The course will introduce you to new concepts and ways of working within art and will allow you to explore and gain confidence to express your own ideas. The emphasis is on practical work and the development of your own portfolio. You will also learn about the role art has played in history and in society today through visits to galleries, working with practising artists and your own independent research. Throughout the course, you will have opportunities to work alongside professional artists and designers to give you a greater understanding of the creative industries.

How will I be assessed?

Examinations, coursework and portfolio.

What can I do next?

A Level Art and Design is widely recognised for developing an enquiring and critical mind as well as developing creative and technical potential, and is a useful qualification for applying for further study in a wide range of areas. You may wish to use your portfolio to support applications for a pre-degree foundation course or a higher course at degree level.

ARCHITECTURE, INTERIOR & PRODUCT DESIGN - 3D DESIGN



"3D Design allows you to
take a small simple idea and
develop it into something
unique, something stylish and
something awe-inspiring."
Jamal - Kind Edward's School

A LEVEL - 2 YEARS

Entry Requirements: 5 GCSEs at grade 4-9
including English and Maths.

What will I study?

Throughout the course you will explore a wide range of fundamental design skills providing you with the tools needed to be in control of your own design future. The course focuses on three main areas of design (Architecture, Interior and Product Design) however there are many other areas that you may wish to explore throughout the course. Throughout the course, you will have opportunities to work alongside professional designers to give you a greater understanding of the creative industries.

How will I be assessed?

Examinations, coursework and portfolio.

What can I do next?

There is a large range of associated courses running at universities and colleges around the country, covering specialisms such as product design, interior design and architecture.

MEDIA STUDIES

A LEVEL - 2 YEARS

Entry Requirements: 5 GCSEs at grade 4-9 including English and Maths

What will I study?

Ever wondered about how your favourite media text goes from an idea to being a fully formed product? If so, this course might be for you. A-level Media Studies is an excellent starting point if you want to learn about a vibrant industry that is one of the largest and most exciting employers in the country. A selection of carefully chosen case studies from Film, TV, Games, the internet and Marketing will illustrate different ideologies and influences in the media industry, developing your skills in understanding and writing about media texts. It will open up a new world of knowledge for you about how media texts are planned, financed, produced and advertised and ultimately reach their target audience. You'll even get to create your own Media productions, using our state of the art technology that includes a brand new TV studio for 2021/22.

How will I be assessed?

Examinations, coursework and portfolio.

What can I do next?

Choose this course if you've ever thought about working in the Media as a presenter, journalist, director, youtuber, blogger or any other aspect of the industry. Most of our students go on to study in higher education, often choosing Media or other related courses. Studying A-level Media is an excellent way to prepare yourself for any University course and typically leads onto a variety of employment opportunities. Many of our ex-students choose to find employment directly within the media industry and have worked on productions as diverse as Eastenders, Emmerdale, The Richard Kyle Show and with employers such as the BBC, ITV and Sheffield DocFest, some even become teachers. A massive employer, the Media Industry in the UK is one of the most secure and rewarding areas of employment.

"Studying media at Longley Park is a great way to express and advance my creative skills. It's a very interesting and enjoyable course with friendly, helpful teachers."

Ayana - Hinde House School





"I have had a great time studying photography at Longley Park, refining my photography skills as well as having great opportunities to go on trips to learn new skills and styles."

Emily - Firth Park Academy



PHOTOGRAPHY

What will I study?

Photography is an exciting and excellent choice of study at A-level where you learn about all aspects of the subject, from the rules of composition, to photoshop and digital camera skills. No prior experience is necessary and you don't even need your own camera. During the course of study you will build up a substantial portfolio of work inspired by the work of established photographers and you will experiment with the many and varied styles and genres of photography. A range of practical projects will focus your learning and enable you to explore the techniques and themes associated with photographic genres including landscape, urban, light painting, portrait, still life and abstract photography. You will also look at the work of other photographers and learn how to analyse and evaluate their images using specialist terms and vocabulary. On this busy but rewarding course expect there to be opportunities to take part in photography walks, trips to galleries and to meet professional photographers at work in their own studios.

A LEVEL - 2 YEARS

Entry Requirements: 5 GCSEs at grade 4-9 including English and Maths

How will I be assessed?

Examinations, coursework and portfolio.

What can I do next?

Most Photography students at Longley Park have the chance to progress on to University and study either Photography, Art and Design, Film and Media or Graphics or other related subjects. Progression is an important aim at Longley Park and students will be expected to plan thoroughly for the next step and beyond. Many ex-students have chosen to study Photography as a specialist degree and gone onto establish themselves in the industry whilst others have used the skills they have developed to aid them in their chosen careers paths in other ways. One thing is for sure, studying Photography prepares students for a wide variety of progression options.



ART & DESIGN



"This course has helped me be more creative and explore a range of methods and techniques."
Emma - Chaucer School

What will I study?

Studying this course will enable you to grow as a creative practitioner within your chosen art and design specialism. You will have opportunities to work alongside professional artists and designers to give you a greater understanding of the creative industry. The creative sectors you will be exposed to range span across; Fine art, fashion design and textiles, 3D design, photography, sculpture and digital media.

UAL LEVEL 3 EXTENDED DIPLOMA IN CREATIVE PRACTICE - 2 YEARS

Entry Requirements: 4 GCSEs at grade 4-9 including English or Maths

EQUIVALENT TO 3 A LEVELS

This course will allow you to explore a wide range of traditional and contemporary methods and techniques, alongside a conceptual and theoretical underpinning of your creative practice. You will be assessed through a range of specialised projects and personal projects from which you will develop your own interests and skill set.

How will I be assessed?

Portfolio and completion of a final project each year. There are no exams.

What can I do next?

The two years on this course will culminate in you building a refined, individual portfolio of work. This has allowed previous students to successfully pursue higher education and careers in graphic design, architecture, interior design, fashion and textiles, set design, illustration, art technician and art therapist.



GAME ART & DESIGN



"One of the best concept art courses in Sheffield."
Elisabah - High Storrs School

What will I study?

Interested in working in the games industry? On this course you'll get to learn a wide range of professional skills and software, including 3D digital modelling, concept art, animation and graphic design. You'll also develop your own ideas for video games using character design, world building and storytelling skills. We'll also be exploring how the games industry works and equipping you with essential skills you can take into all kinds of future careers.

UAL LEVEL 3 EXTENDED DIPLOMA IN CREATIVE PRACTICE - 2 YEARS

Entry Requirements: 4 GCSEs at grade 4-9 including English or Maths

EQUIVALENT TO 3 A LEVELS

You'll be able to develop your own specialisms throughout the course and discover your strengths. Where you choose to take these skills is up to you!

How will I be assessed?

Portfolio and completion of a final project each year. There are no exams.

What can I do next?

The games industry is a huge employer, with a diverse range of jobs, including concept artists, character designers, 3D modellers, level designers, animators, and game designers. Alternatively, the skills you learn on this course could also prepare you for other creative industry careers, such as illustration, special effects, graphic design, architecture, and product design. Many of our students have gone on to study game design and other creative courses at university.

ART & DESIGN - VISUAL ARTS & CREATIVE MEDIA



"I enjoyed the opportunity to advance my skills in both art and media and develop my creative ability."
Noor - Hinde House

UAL LEVEL 2 DIPLOMA - 1 YEAR

Entry Requirements: At least 2 Grade 3s at GCSE

What will I study?

The course covers drawing, film making, graphics, photography and painting and 3D areas such as modelling and ceramics. You will complete projects which allow you to learn new skills and explore your own ideas using a range of art and design media. Assignments are based on real-life design briefs and you will find out about how professional artists and designers work.

How will I be assessed?

Portfolio and completion of a final project each year. There are no exams.

What can I do next?

Students from this course can progress onto the UAL Level 3 Extended Diploma in Art & Design or UAL Level 3 Extended Diploma in Creative Digital Media Production. You could study A Levels in subjects such as Art, Media Studies, 3D Design or Photography.

Studying A Level English Language or Literature will give you the opportunity to develop your understanding of the ways writers communicate across many different genres and forms.

You will explore the influence of linguistic, literary, cultural, social and historical contexts. You will develop your analytical skills and expertise, giving you the ability to delve beneath the surface meaning of texts, to explore hidden and implied meanings at another level. You will learn about how the English language has developed and changed and how it can be used for many different purposes. Studying English at A Level will help you to develop skills in research, written and verbal communication, debate and discussion.

English subjects are highly regarded by universities as they give students the opportunity to develop skills in critical reading, analysis, evaluation and communication. These are skills that are much sought after in the workplace – particularly in areas such as the media, journalism, law, research, social work and education.

Skills and Qualities

- Creative thinking
- Critical reading and writing
- Accuracy
- Curiosity
- Attention to detail
- Presentation skills
- Analysis
- Communication

Career Paths

- Journalist
- Copywriter
- Teacher
- Paralegal
- Marketing
- Editor
- Museum curator
- Freelance writer
- Publisher
- Social media manager
- PR manager

Labour Market Info

English graduates are employed in a wide range of sectors, and are well placed to gain highly sought after jobs requiring excellent communication skills, writing, or undertaking research.



ENGLISH

ENGLISH LITERATURE

A LEVEL - 2 YEARS

Entry Requirements: 5 GCSEs at grade 4-9 including English and Maths

What will I study?

You will read, discuss, analyse and write about a wide range of literature. You will develop your critical skills and learn how to present your ideas effectively. You will read widely and independently, engage creatively and apply your knowledge of literary analysis and evaluation in speech and writing. You'll explore the contexts of the texts you're reading and deepen your understanding of the changing traditions of literature in English. The course features a fascinating mix of texts from across the genres.

How will I be assessed?

Examination and coursework.

What can I do next?

The critical, analytical and communication skills developed during the course make English Literature an excellent preparation for higher education in any area. If you want to specialise, there are a wide range of courses in English, journalism, media and cultural studies.

"Studying A Level English Literature at Longley Park has been an exciting and thought-provoking experience."
Hala - Fir Vale School

ENGLISH LANGUAGE

A LEVEL - 2 YEARS

Entry Requirements: 5 GCSEs at grade 4-9 including English and Maths

What will I study?

This course combines a critical and creative approach. You will analyse and produce texts, demonstrating understanding and skill in how the English language works across a variety of contexts. You will learn about how language works on many different levels. The course will involve studying how we communicate in written and spoken texts according to our social group, region, occupation, gender and ethnicity. You will also learn about how children learn to speak, read, and write, and about how language has changed across time.

How will I be assessed?

Examination and coursework.

What can I do next?

The study of English Language will develop your confidence in writing and analysis and is, therefore, a valued subject for both university-level study and employment. Some students choose to specialise in areas such as language, linguistics, phonetics and speech and language therapy at university; others go on to further study and work in areas such as teaching, journalism, law, marketing, librarianship and management.

"If you like being creative and analytical, this is the course for you."
Navin - Hinde House School

Humanities subjects give students the opportunity to learn more about the world in which we live.

As a humanities student you will explore the ways in which people interact with each other and the many varied reasons behind events, beliefs, opinions and actions. You will learn to apply the moral, ethical, cultural and ideological approaches that bring together this fascinating group of subjects. You will need to keep up to date with current affairs and should have a keen interest in how the decisions made in the current moment draw on past events and help to shape the future.

Humanities subjects are highly regarded by universities as they give students the opportunity to develop skills in critical reading, analysis, evaluation and communication. These are skills that are much sought after in the workplace – particularly in areas such as the media, journalism, law, research, social work and education.

Skills and Qualities

- Problem solving
- Curiosity
- Communication
- Leadership
- Precision
- Compassion
- Calm under pressure

Career Paths

- Emergency services
- Teacher
- Social worker
- Council departments
- Psychologist
- Probation worker

Labour Market Info

The public sector makes up for almost 20% of the UK workforce.

HUMANITIES



GEOGRAPHY

A LEVEL - 2 YEARS

Entry Requirements: 5 GCSEs at grade 4-9 including English and Maths

How will I be assessed?

Examinations and fieldwork investigation.

What can I do next?

Geography is an extremely versatile subject and is a valuable foundation for Science, Humanities and Arts subjects at Higher Education. Geography students are highly sought after both by universities and employers due to the unique range of skills they develop and their in depth understanding of the world. There are a wide range of university courses which value Geography as an A Level and the subject is particularly useful for students interested in further study, or work, in the areas of journalism, travel and tourism, civil engineering, surveying, environmental science, environmental law, economics, architecture, local and central government, the police, global development, scientific research and meteorology.

What will I study?

You will learn about how we shape the world we live in, and how we can manage the big issues facing humanity, such as population growth, climate change and increasing demand for limited resources such as water. You will learn about the geography of the local area, in the UK and around the world. You will explore new human environments such as world mega-cities, alongside dynamic physical environments such as those created by earthquakes and volcanoes. Fieldwork is an important part of the course, and you will have the opportunity to carry out your own study allowing you to develop a wide range of skills which are valued by employers and universities.

"Geography empowers you with skills and knowledge which you are able to use in any field and conversation. Being able to understand the human and physical processes creates a clearer image about the planet you reside on."

Tesneem - Fir Vale School



HUMANITIES & SOCIAL SCIENCE



What will I study?

The Level 2 Certificate balances skills-based units with introductory units based around the Humanities and Social Sciences. Learning will be varied to help you develop a wide-range of academic skills, combining written work, discussion, debate, case studies, role plays and fieldwork.

ASCENTIS LEVEL 2 CERTIFICATE – 1 YEAR

Part of our Level 2 Foundation Programme.
Entry Requirements: Students are required to have already achieved a combination of at least 3 3s and 4s at level 2 (GCSE or equivalent), including at least a 4 in English.

Two pathways are available, each taking a focus on different subjects within the fields of Humanities and Social Science –

- Humanities Pathway – History, Geography, Religious Studies
- Social Science Pathway – Sociology, Psychology, Criminology

How will I be assessed?

A combination of written work and skills based tasks which are assessed by teachers, both in examined and non-examined conditions.

What can I do next?

The aims of the qualification are to enable learners to progress to Level 3 study, such as A Levels or Applied Generals. You will develop skills and knowledge in the areas of Social Science and Humanities relevant for courses such as Criminology, Psychology, Sociology, Politics, Geography, History and RS, and more transferable study skills for further study into a wider range of our Level 3 courses.

GOVERNMENT & POLITICS



“With the knowledge of how the UK and US political systems work you can start to understand what you hear and read in the news.”

Kate – Bradfield School

A LEVEL – 2 YEARS

Entry Requirements: 5 GCSEs at grade 4-9 including English and Maths

What will I study?

Why do we have rules in Society? What is the point of the Government system? How does our system work and how does everyone play a part in it? Who holds the power to make things happen and create change? If you are interested in how our society functions then Government and Politics may be right up your street. You will learn about the way decisions made by government influence people's lives, and the way that people can participate in local, national and global politics.

How will I be assessed?

Written examination.

What can I do next?

As well as offering you insights into the ways in which the British and American political systems work, A Level Politics will help you to develop an enquiring and critical mind. The course provides an excellent background for careers in law, journalism, the caring professions, teaching and a range of management and business areas. It teaches you to think analytically and philosophically. As such it is well respected by universities and employers alike.

HISTORY

A LEVEL - 2 YEARS

Entry Requirements: 5 GCSEs at grade 4-9 including English and Maths

What will I study?

You will study the French Revolution, arguably the most significant event in world history, looking in detail at the reasons for it, the main events of it and the events that followed it. You will also study British history between 1851 and 1974 and will learn how the British society we see today was formed including how it was influenced by, and further developed, the principles of the French Revolution.

How will I be assessed?

Examination and coursework.

What can I do next?

History is an excellent subject for the study of a wide range of university courses including law, economics, business studies, philosophy, English, archaeology, politics and social sciences. If you choose to specialise in History there are a wide range of courses available leading to employment in all sorts of fields, including law, journalism, business, teaching and the museum and heritage sector.

"I highly recommend for students to pick this course if they have a passion for how the world came about today and have a strong thirst for knowledge."

Amelia - Clifton Community School

PSYCHOLOGY

A LEVEL - 2 YEARS

Entry Requirements: 5 GCSEs at grade 4-9 including English, Maths and Science

What will I study?

Psychology is the scientific study of mind and behaviour, attempting to explain why people behave in the ways they do. You will discover and analyse what psychologists have found out about key issues such as the structure of memory, understanding social influence and the cause of mental illness. You will study major perspectives in the areas of biological and cognitive, behavioural psychology as well as research methods, data handling and statistics. You will also study clinical, health and criminal psychology.

How will I be assessed?

Examination.

What can I do next?

Psychology is one of the fastest growing subjects in Higher Education. A Level Psychology is not a requirement for a degree but will give you a useful insight into the subject. Psychology graduates are highly sought after due to their unique mix of skills in literacy, numeracy and science. Psychology is also beneficial for work in marketing, education, nursing, advertising, social work, HR and public services.

"Psychology at Longley Park was so fascinating, from learning things like why we obey others to how our childhood experiences affect our daily lives."

Nusaiba - Other

PHILOSOPHY, ETHICS & RELIGION

What will I study?

There are three sections to this course, and across them you will study key thinkers and perspectives from the past 2,500 years.

1 – Philosophy

Where does knowledge come from? What are we able to know for certain? Why are we here? Why is there evil in the world? What is the purpose of life? Does Science explain everything, or nothing? Is a belief in life after death rational?

2 – Ethics

How do we know what is right and wrong? Is there universal truth that applies to us all? How should we treat the environment and others in it? Can war ever be justified? Should medical issues such as abortion and euthanasia be legal?

A LEVEL - 2 YEARS

Entry Requirements: 5 GCSEs at grades 4–9 including Maths and English

3 – Religion

How does religion help humans with their moral codes of conduct? What can we learn from religious history? How does religion fit into the 21st Century? Are different religions still relevant today? Why are religions similar and different at the same time?

How will I be assessed?

Examinations.

What can I do next?

Whether you want to be a doctor, pharmacist, police officer, teacher, social worker, journalist, film maker, lawyer or work in business, you will engage with lots of different types of people, requiring empathy, respect and tolerance. Studying philosophy, ethics and religion is really attractive to employers and universities because you have learned how to think in a different way that helps you better understand people and communities. The course develops analytic, interpretation and argument skills; having a contextual understanding of alternative world perspectives provides a solid grounding when it comes to interpreting wider academic theory and concepts. Universities offering science, medicine, humanities, English, law, media or business will welcome the fact that you have studied what it means to be alive.

"This course fascinates me, especially when we learn about arguments for correct moral action, why we think the way we do, and arguments for and against God's existence."
Iqrah – Firth Park Academy

SOCIOLOGY

A LEVEL - 2 YEARS

Entry Requirements: 5 GCSEs at grade 4-9 including English and Maths

What will I study?

Sociology is the study of the individual and society and will appeal to students who are interested in investigating how our everyday lives are shaped by factors such as class, gender and ethnicity. Sociology will develop your research skills and your ability to weigh up evidence and arguments. You will look at human behaviour by studying social groups and the influences on their actions, ideas and beliefs. You will also look at the different methods used by sociologists to collect information and you will study the various theoretical perspectives that aim to explain why society is organised the way it is.

How will I be assessed?

Examination.

What can I do next?

A Level Sociology is a valuable subject for a wide range of careers and higher education courses. You may wish to look specifically at areas which involve an understanding of people and social relationships, such as journalism, health care, social work, education, the public services, marketing and management.

"I really like the discussions we have in class about social matters in society and the fact we can all respectfully add our opinions is another reason why I love the subject."

Tamanna - Parkwood Academy

CRIMINOLOGY

WJEC LEVEL 3 DIPLOMA - 2 YEARS

Entry Requirements: 5 GCSEs at grade 4-9 including English and Maths

EQUIVALENT TO 1 A LEVEL

What will I study?

Criminology is the study of crime and criminal behaviour. You will learn about different types of crime and how perceptions of crime may differ. You will also gain an understanding of why people commit crime and how the criminal justice system works. You will study real life situations and cases and apply criminological theories to evaluate the effectiveness of social control and criminal justice policies.

How will I be assessed?

Examination and controlled assessment.

What can I do next?

Studying Level 3 Criminology will help you gain access to a wide range of higher education courses, including Criminology, Psychology, Sociology and Law. The qualification also provides students with valuable skills and understanding that can lead to a career in a number of areas, such as journalism, law, social work, education and the public services.

"I like Criminology because it helped me to understand the mindset of criminals, why they commit crimes, and the factors that affect them."

Arshaba - Firth Park Academy

In Health and Social Care there are some amazing opportunities for you to get involved with.

Previous years have seen students visit local universities including Sheffield Hallam and Sheffield University. Students participated in a Health and Social Care Taster Day where there was a carousel of Health Professionals available to meet and receive advice about various professions within the Health Sector. We also provide additional qualifications such as First Aid and our students have the opportunity to be part of the NHS cadet placement scheme. We are really proud of the achievements of our students when they leave us to either progress onto university, apprenticeships or employment.

Skills and Qualities

- Problem solving
- Attention to detail
- Communication
- Accuracy
- Creative thinking
- Professionalism
- Respect
- Communication
- Compassion
- Empathy

Career Paths

- Clinical roles:
Midwife,
Nurse,
Social worker,
Therapist,
Counsellor
- Non clinical roles:
IT,
Finance,
Business or data roles

Labour Market Info

Nationally the Health and Social Care sector will need up to 650,000 more workers by 2035 to meet growing demand for care and support "The Health and Social Care sector which includes the NHS, offers over 300 unique jobs, all in high demand. From catering staff, hospital porters and administrators, to rehabilitation workers, dieticians and doctors, the range of skills sought in health and social care offers incredible scope to find your perfect job."

HEALTH AND SOCIAL CARE



HEALTH & SOCIAL CARE

BTEC LEVEL 3 EXTENDED CERTIFICATE - 2 YEARS

Entry Requirements: 4 GCSEs at grade 4-9 including English and Maths

EQUIVALENT TO 1 A LEVEL

What will I study?

This course covers health, care of older people, individuals with specific needs and also early years (care and education). You will find out about the needs of different client groups and how they are supported in different Health and Social Care settings. This course includes essential work placement so you develop practical skills and work alongside Health and Social Care Professionals.

How will I be assessed?

Examinations and assignments.

What can I do next?

This qualification will help you to progress to Higher Education on diploma or degree courses related to social work, nursing, paramedic or occupational therapy. We work in partnership with Sheffield Hallam University, and they will guarantee an interview for nursing courses provided you meet the entry requirements. If you don't already have a grade 4 (C) or above in English, Maths or Science, these should be studied alongside the course to make sure that you have the qualifications required to apply for HE and health related courses.

"I enjoy my lessons because I learn about the different care approaches I could use with patients for my future career. I particularly enjoy studying human development and the stages of foetus growing."

Aqsa - Fir Vale School

HEALTH & SOCIAL CARE

BTEC LEVEL 3 EXTENDED DIPLOMA - 2 YEARS

Entry Requirements: 4 GCSEs at grade 4-9 including English and Maths

EQUIVALENT TO 3 A LEVELS

What will I study?

You will learn about the care needs of different groups, including the elderly, young children and people with disabilities and how care professionals meet these needs. Assignments and projects are based on realistic workplace situations and you will learn about the standards expected in care settings. The course includes essential work placements so you can develop your practical skills and work alongside Health and Social Care professionals.

How will I be assessed?

Examination, assignments and work placement observation.

What can I do next?

Students from this course have gone on to university to study social work, adult social care, child social care, nursing, paramedic studies, mental health nursing and occupational therapy. We work in partnership with Sheffield Hallam University, Sheffield University and many others who offer a range of courses in related areas. Some students go on to employment in a health and social care setting.

"The building is filled with kind, respectful staff and students who make a pleasant atmosphere here in the sixth form."

Morgan - Sheffield College



"I have really enjoyed this course and got to learn about so many different aspects of health. The teachers are helpful and support students with the learning."
Nicole - Newfield Secondary School

HEALTH & SOCIAL CARE



BTEC LEVEL 2 CERTIFICATE - 1 YEAR

Entry Requirements: At least 2 Grade 3s at GCSE

What will I study?

You will learn about the care needs of different groups including the elderly, young children and people with disabilities and how care professionals meet these needs. This includes human body systems and care of disorders, nutrition and healthy living, human lifespan and development and communication. Assignments and projects are based on realistic workplace situations and you will learn about the standards expected in care settings. Work experience is an essential part of the course.

How will I be assessed?

Examinations and assignments.

What can I do next?

Students from this course have gone on to study the BTEC Level 3 Extended Certificate in Health and Social Care, the BTEC Level 3 Extended Diploma in Health and Social Care course or other Level 3 qualifications such as Childcare. With further training or study you could go on to a career in areas such as residential or health care or teaching support.

Maths is a really exciting subject which opens many doors for progression; it is highly respected by employers and universities.

We emphasise the problem solving skills required for applying mathematics to the real world. You will be given the opportunity to take part in both individual and team mathematics competitions, competing against students from across the country. If you achieve a really high result you could even be invited to compete at the very prestigious British Mathematics Olympiad. Mathematics is an extremely rewarding subject and we will support you to achieve your potential at whichever level you are working. Our extensive range of workshops will provide you with the extra individual support required for you to achieve the highest grade possible.

Skills and Qualities

- Calm under pressure
- Professional and caring
- Communication
- Team working
- Decision making
- Problem solving
- Attention to detail
- Communication
- Accuracy
- Creative thinking

Career Paths

- Engineering
- Technician roles
- Construction
- Educators
- Retail
- Police

Labour Market Info

The Retail sector employs approximately 57,600 people and has an output of £1.6 billion in South Yorkshire.

The public sector makes up a large amount of the UK workforce and has a massive 5.4 million employees across the UK, which accounts for 17.1% of people in employment.

MATHS

MATHEMATICS

A LEVEL - 2 YEARS

Entry Requirements: 5 GCSEs at grade 4-9 including English plus a grade 6(B) in Maths

What will I study?

You will study pure mathematics which will extend your knowledge of topics such as algebra, coordinate geometry and trigonometry. You will also learn new concepts such as calculus. Alongside pure mathematics you will study mechanics and statistics. Statistics will build on and extend your data and probability knowledge, mechanics looks at the physics of motion and forces.

How will I be assessed?

Examinations at the end of the second year.

What can I do next?

A Level Maths is essential for Higher Education courses in computer science, engineering, physics or mathematics itself. It is also highly desirable for science and social sciences, any medically-related qualification, business and accounting.

"Getting the answer of a difficult question right in maths is like winning the lottery; the process finally clicks and you know what you need to do."

Shakirah - Hinde House School

FURTHER MATHEMATICS

A LEVEL - 2 YEARS

Entry Requirements: 5 GCSEs at grade 4-9 including English plus a grade 8(A) in Maths

What will I study?

You will study AS Level Further Mathematics in the first year whilst also studying A Level Mathematics alongside. In the second year you will complete the full A Level in Further Mathematics. As well as allowing you to study mathematics in more depth, Further Mathematics gives you a much broader mathematical background ensuring you are highly employable in all mathematical fields. In Pure you will extend your knowledge of topics such as algebra and calculus, you will also learn new concepts such as complex numbers, matrices and polar coordinates. Alongside Pure you will also be introduced to decision maths and delve further into mechanics or statistics.

How will I be assessed?

Examinations at the end of the first and second years.

What can I do next?

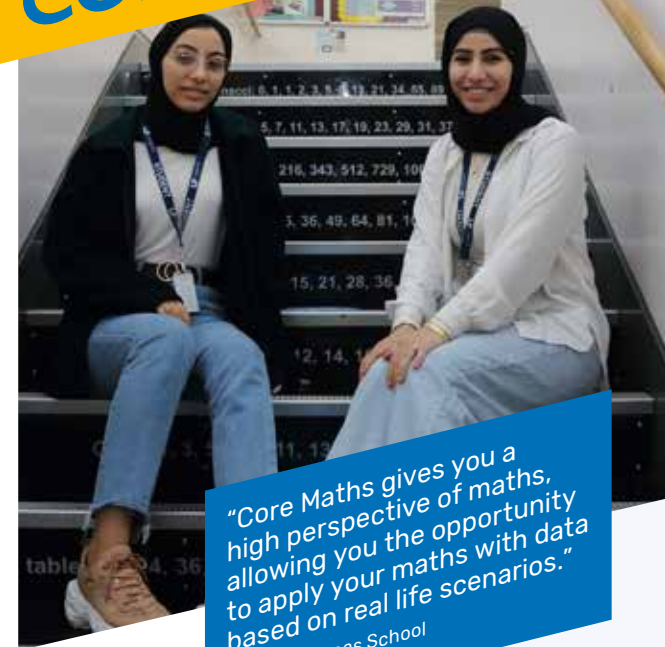
Further Mathematics students are particularly well prepared for degree level courses in mathematics, engineering, science, medicine, dentistry, computing, finance, economics and other mathematics based subjects.

"Further Maths is always challenging what you already know in maths by expanding on past ideas and creating new ones as well."

Ben - Yewlands Academy

$$\begin{array}{r} x^3 + x^2 \\ \hline -x^2 \\ \hline x^2 \end{array}$$

CORE MATHS



"Core Maths gives you a high perspective of maths, allowing you the opportunity to apply your maths with data based on real life scenarios."

Osei - Overseas School

LEVEL 3 CERTIFICATE - 1 YEAR

Entry Requirements: 4 GCSEs at grade 4-9 including English and Maths

EQUIVALENT TO 1 AS LEVEL

Core Maths is a one year course, studied alongside a BTEC Level 3 Extended Diploma or 3 A Levels.

What will I study?

Core Maths qualifications enable learners to strengthen and develop the mathematical knowledge and skills they have learnt at GCSE. You will study maths topics, which will consolidate and extend the mathematics learnt to date and develop transferable problem solving skills. This includes, spreadsheets, modelling and estimation, statistical and financial problem solving, exponential growth, graphs and probability and risk.

How will I be assessed?

Examinations.

What can I do next?

The skills developed in the study of mathematics are increasingly important in the workplace and in higher education; studying Core Maths will help you keep up these essential skills. Most students who study maths after GCSE improve their career choices and increase their earning potential. The course also gives an examination subject at Level 3 that would strengthen a UCAS application.

We are extremely proud of the work that our students produce and the wide range of scientific skills they develop as our courses are taught in a very practical way.

Our teachers come from a wide range of industrial backgrounds and are able to offer students real-life context to learning. Graduating students have gone on to study Medicine; Veterinary Science; Pharmacy; Radiography; Electrical, Aerospace, Automotive and Mechanical Engineering; Biomedical Sciences and lots of other courses, many at Russell Group universities.

We encourage our students to take up a range of opportunities, including NHS experience through our volunteering links; becoming part of national data collection on climate change with the Peak District National Parks or gaining one of the prestigious placements or with the Nuffield Foundation working with university professionals on real projects.

Skills and Qualities

- Problem solving
- Attention to detail
- Communication
- Accuracy
- Creative thinking

Career Paths

- Doctor
- Nurse
- Therapist
- Counsellor
- Engineer
- Technician
- Energy managers Landscape and Forestry managers
- Teacher

Labour Market Info

Engineering and technician roles are in high demand in the UK - 124,000 needed each year (Engineering UK).

Nationally the Health and Social Care sector will need up to 650,000 more workers by 2035 to meet growing demand for care and support.

SCIENCE

BIOLOGY

A LEVEL - 2 YEARS

Entry Requirements: 5 GCSEs at grade 4-9 including English, plus Maths and 2 Science GCSEs at 6

What will I study?

Biology is related to many areas of our life including food safety, agriculture, medicine, sport and scientific research. You will learn about the nature of life from the molecules and chemicals that life is built upon to the way populations of the world's living organisms develop and live together. Biology is a very hands-on subject and there will be regular practical work in class. Your study will involve some dissection of animal and plant material. Data analysis also forms an integral part of the course so you need to be confident using Maths. If you are not studying A Level Chemistry, you will need to work with your Biology teachers to cover the basic biochemistry needed for this course.

How will I be assessed?

Examination and practical endorsement.

What can I do next?

Biologists can be found in many places, including medicine, dentistry, physiotherapy, veterinary medicine, laboratory work, forensics, pathology and nursing. Biology is also a well respected A Level for a wide range of non-science related courses and careers because it helps you to develop analytical, practical and investigative skills.

"After studying biology at Longley Park I gained a genuine interest in exploring the subject, even outside the curriculum."
Katie - Silverdale School

CHEMISTRY

A LEVEL - 2 YEARS

Entry Requirements: 5 GCSEs at grade 4-9 including English, plus Maths and 2 Science GCSEs at 6

What will I study?

Chemistry allows you to learn more about the structure of the world around you through experiments and find out about the chemical reactions that we encounter every day, whether it be in breathing, baking or driving a car. You will study atomic structure, bonding and the periodic table. Other key topics studied include chemical kinetics, equilibrium and molar calculations. You will develop new practical skills in organic synthesis, extraction and analysis whilst being introduced to new topic areas such as Transition Metals.

How will I be assessed?

Examination and practical endorsement.

What can I do next?

Chemistry develops lots of skills that are relevant for employment or study at a higher level, such as problem solving, scientific method, practical work and use of number. Chemistry is essential if you want to study medicine, dentistry, pharmacy, forensic science or veterinary science at a higher level. Other popular choices for progression include chemistry, chemical engineering and biochemistry. Chemistry is often a desired choice for entrance to other science-based courses and occupations.

"Chemistry is amazing. From naming and drawing organic molecules, to maths and equations, this subject has it all."
Abdulsalem - Fir Vale School

PHYSICS

A LEVEL - 2 YEARS

Entry Requirements: 5 GCSEs at grade 4-9 including English, plus Maths and 2 Science GCSEs at 6

What will I study?

Physics gives you the opportunity to investigate and understand some of the fundamental laws of the universe, ranging from the tiniest particles of matter to vast star systems. You will cover topics such as mechanics, subatomic particle physics, electricity and theory of waves. You will also study topics which include gravitational, electrical and magnetic forces, nuclear and thermal physics and oscillations.

How will I be assessed?

Examination and practical endorsement.

What can I do next?

A Level Physics is a good starting point for further study of natural science and engineering related courses. It also supports progression into subjects such as medicine and radiography and is a good background for courses in many other fields, especially those that rely on numeracy and logical thought.

"I chose to study Physics because it is a subject that really interests me. I have always been intrigued by space and how things work and connect and Physics has helped broaden my understanding."

Lucy - Ecclesfield

APPLIED SCIENCE

BTEC LEVEL 3 EXTENDED DIPLOMA - 2 YEARS

Entry Requirements: 5 GCSEs at grade 4-9 including English, Maths and Science

EQUIVALENT TO 3 A LEVELS

Can also be taken as a smaller qualification

What will I study?

You will study all of the main sciences, Chemistry, Biology and Physics in detail. You will learn about how science knowledge and skills are used in a variety of scientific workplaces, analytical sciences and biomedical sciences.

How will I be assessed?

Examinations and coursework.

What can I do next?

Our BTEC Applied Science students have gone on to university to study gateway to medicine, chemical engineering, pharmaceutical science biomedical science, medical genetics, health and human sciences, human biology, biochemistry, podiatry, forensic science, biology, biosciences, genetics and molecular biology, microbiology and molecular biology, veterinary science, wildlife conservation, radiotherapy and radiography. Many of these students have gone to the prestigious Russell Group Universities. Students have also taken up apprenticeships including microbiology and surgical instrumentation.

"Applied science it's a very good course that allow you to learn a wide range of skills. The reason why I chose Applied science is because I have always been passionate about science."

Omar - Tapton School

APPLIED SCIENCE

BTEC LEVEL 3 EXTENDED CERTIFICATE - 2 YEARS

Entry Requirements: 5 GCSEs at grade 4-9
including English, Maths and Science

EQUIVALENT TO 2 A LEVELS

How will I be assessed?

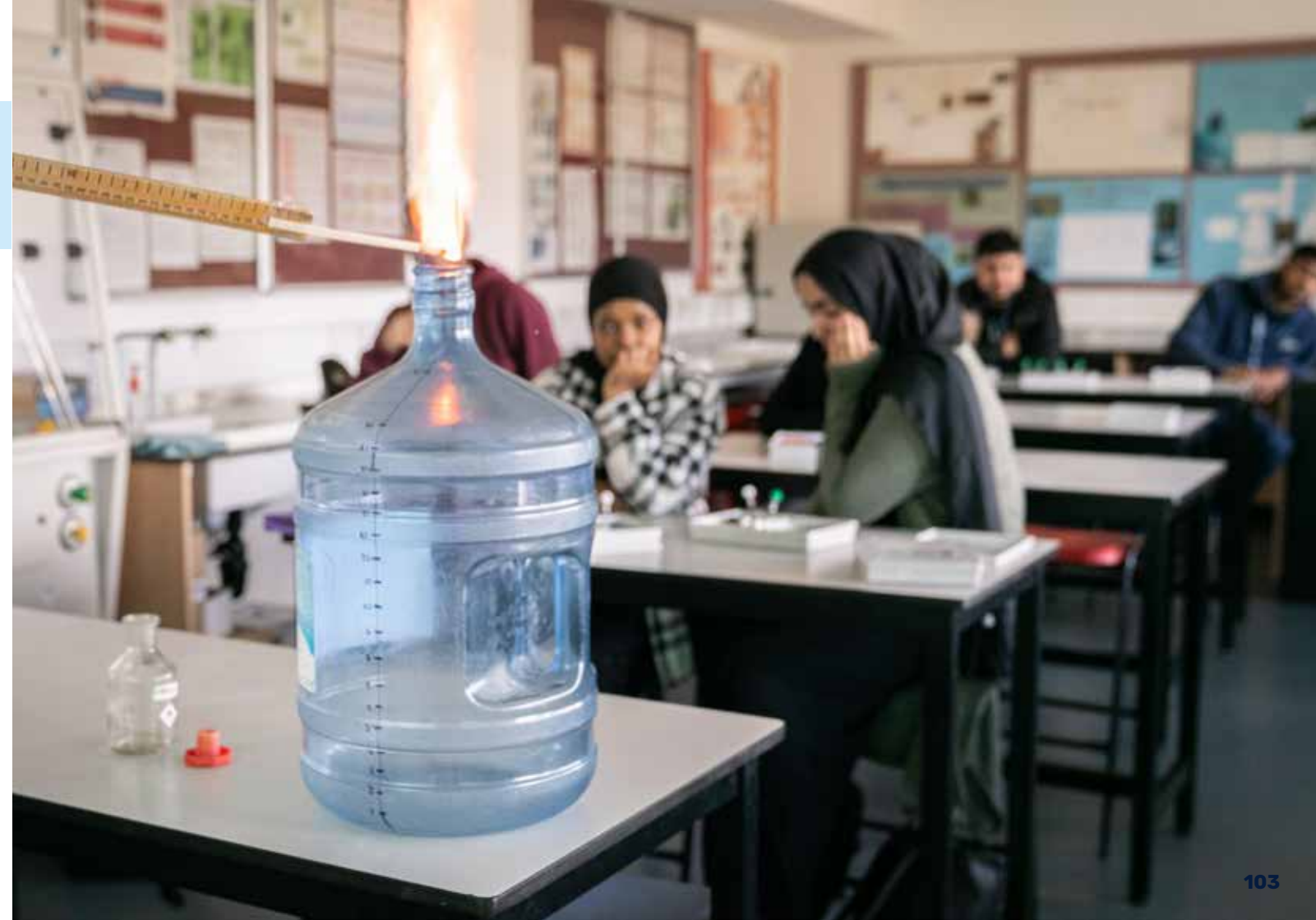
2 course work units and 2 examined units.

What can I do next?

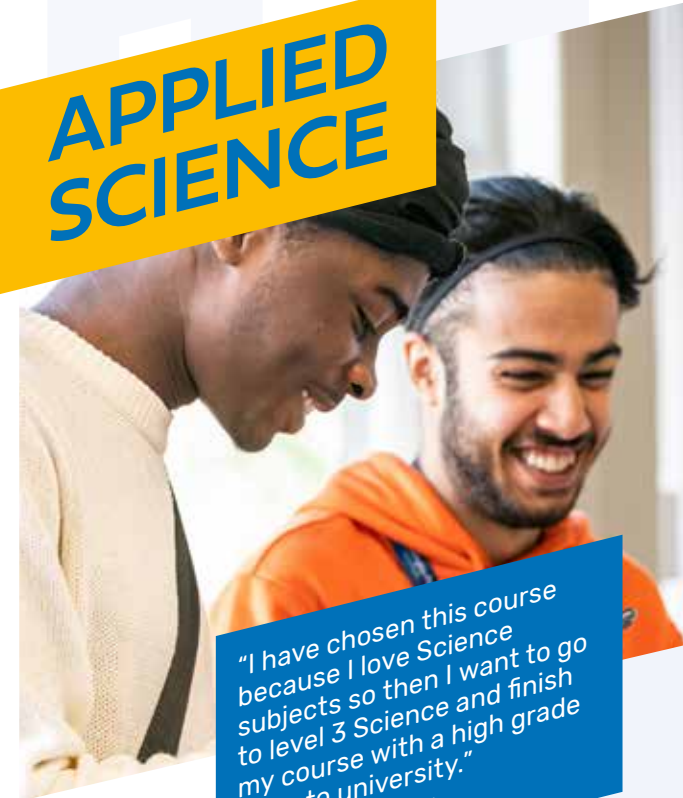
Depending on the combination of courses that you pick alongside this you would be well suited to several pathways. This course develops the transferable and analytical skills which are valued by higher education providers and employers. Typical routes from this course include; Engineering, Sports, Nutrition, Nursing and Healthcare, Biological and Physical sciences, and Environmental and Earth Sciences. Equally this course could be used to gain skills required for careers such as teaching, working in the civil service or public services.

What will I study?

You will study fundamentals of Science and how these are important in the scientific workplace. This course will build on your previous science studies covering aspects of all three Sciences (Biology, Chemistry and Physics). Including cells and tissues; genetics; atomic structure and chemical and physical properties and waves. You will also study a number of practical techniques required for any Science career. This course would be well suited to combine with other level 3 Sciences including; Engineering, Maths and Psychology, or will go alongside other BTEC's to compliment a suite of qualifications.



APPLIED SCIENCE



"I have chosen this course because I love Science subjects so then I want to go to level 3 Science and finish my course with a high grade to go to university."
Alisha - Fir Vale School

BTEC LEVEL 2 EXTENDED CERTIFICATE - 1 YEAR

Entry Requirements: At least 2 Grade 3s at GCSE, including Science

What will I study?

You will carry out experiments and learn how science is used in different jobs. The course covers Biology, Chemistry and Physics and the skills needed by scientists to collect, analyse and interpret data. Assignments are based on real applications of science in areas such as forensic science, food technology and environmental science.

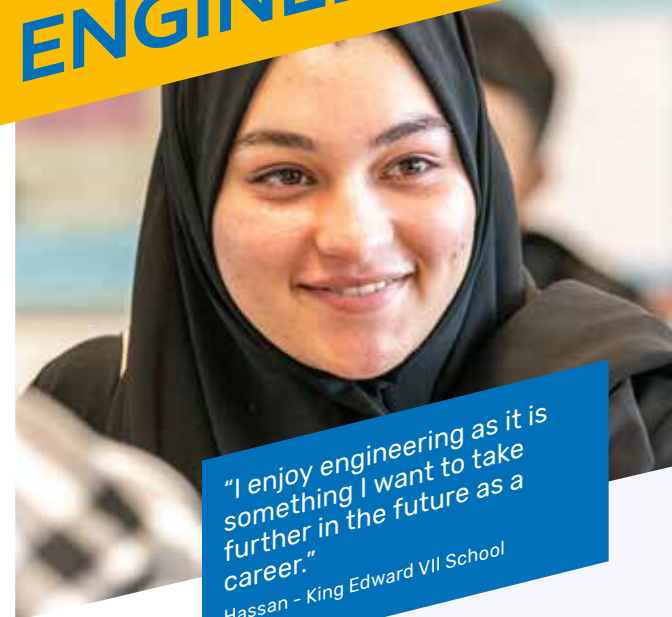
How will I be assessed?

Examinations and coursework.

What can I do next?

Students from this course have gone on to do the BTEC Level 3 Extended Diploma in Applied Science.

CTEC ENGINEERING



"I enjoy engineering as it is something I want to take further in the future as a career."
Hassan - King Edward VII School

CAMBRIDGE TECHNICAL - LEVEL 3 EXTENDED CERTIFICATE - 2 YEARS

Entry Requirements: 5 GCSEs at grade 4-9 including English and Science and At least a grade 6 in Maths

What will I study?

You will learn about mechanical and electrical engineering principles and applications and how to solve real life engineering problems. The course involves practical work on electrical circuits, forces, materials testing and servicing engineered components.

How will I be assessed?

External assessments and internal assignments.

What can I do next?

You can progress to study engineering at university or apply for technical apprenticeships or technician jobs in the engineering industry.

We continue to be impressed by the goals that our students aim for and achieve.

We will help you to develop the skills and qualities needed for your chosen profession. Through links with employers and the local community you will be given the opportunity to enhance your skills, knowledge and experience in a variety of sports based contexts. These include links with professional sports clubs such as Sheffield Wednesday FC, National Governing Bodies, charities, voluntary organisations and local schools. We also has a fantastic enrichment programme that you can also get involved in, either by playing, coaching, umpiring and scoring or volunteering.

Sports you get involved in and play include football, basketball, table tennis, badminton, tennis, handball, indoor cricket and dodgeball. We also has a fully functional gym that sport students will be able to use for some assignments, and also to train outside of lesson times free of charge. You will also have the opportunity to gain additional qualifications such as First Aid and Fitness Instructors qualifications.

Skills and Qualities

- Coaching
- Leading
- Communication
- Determination
- Self-motivated
- Organised

Career Paths

- PE teacher
- Sports Coach
- Sports team manager
- Sport complex manager
- Personal Trainer
- Gym Instructor
- Referee
- Professional sports player
- Event coordinator
- Sports development manager

Labour Market Info

Sheffield is the first National City of Sport, with a range of high quality facilities originally built for the World Student Games in the city in 1991:

- Sheffield Arena
- Ponds Forge International Sports Centre, with its Olympic-sized pool and diving pool
- English Institute of Sport, with an indoor running track and facilities and support for over 20 sports including athletics, diving, cycling, squash and boxing

The World Snooker Championships have been held in the city's Crucible Theatre since 1977.

The world's oldest football club, Sheffield FC, has recently celebrated it's 150th anniversary. The city also has two professional football clubs, Sheffield United and Sheffield Wednesday.

SPORT

SPORT & EXERCISE SCIENCE



BTEC LEVEL 3 NATIONAL DIPLOMA

Entry Requirements: 5 GCSEs grade 4-9 including Maths, English and Science

EQUIVALENT TO 2 A LEVELS

- Specialised fitness training (Optional)
- Physical activity for individual and group-based exercise (Optional)
- Social cultural issues in sport and exercise. (Optional) Or Biomechanics in sport and exercise science. (Optional)

How will I be assessed?

You will be assessed through examinations, practical's and theoretical coursework.

What can I do next?

The qualification carries UCAS points and, when taken alongside another Level 3 qualification, it is recognised by higher education providers as meeting admission requirements for many relevant sport science or related courses, for example: • BSC (Hons) in Sport and Exercise Science, if taken alongside A Levels in Biology and Psychology, • BA (Hons) Physical education, BSC (Hons) Sports coaching • BSC (Hons) in Biology, if taken alongside A levels in Biology and Mathematics • BA (Hons) in Applied Sport Science, if taken alongside an A Level in Mathematics and a BTEC in Applied Science.

What will I study?

Everyone taking this qualification will study six mandatory units and three optional units, covering the following content areas:

- Functional Anatomy (Mandatory)
- Sport and exercise physiology (Mandatory)
- Applied Sport and Exercise Psychology (Mandatory)
- Coaching for performance and fitness. (Mandatory)
- Field and laboratory-based fitness testing. (Mandatory)
- Applied research methods in sport and exercise science. (Mandatory)

SPORT & EXERCISE SCIENCE



BTEC LEVEL 3 EXTENDED CERTIFICATE

Entry Requirements: 5 GCSEs grade 4-9 including Maths, English and Science

EQUIVALENT TO 1 A LEVEL

How will I be assessed?

You will be assessed through examinations, practical's and theoretical coursework.

What can I do next?

The qualification carries UCAS points and, when taken alongside another Level 3 qualification, it is recognised by higher education providers as meeting admission requirements for many relevant sport science or related courses, for example: • BSC (Hons) in Sport and Exercise Science , if taken alongside A Levels in Biology and Psychology • BSC (Hons) in Biology, if taken alongside A levels in Biology and Mathematics • BA (Hons) in Applied Sport Science, if taken alongside an A Level in Mathematics and a BTEC in Applied Science.

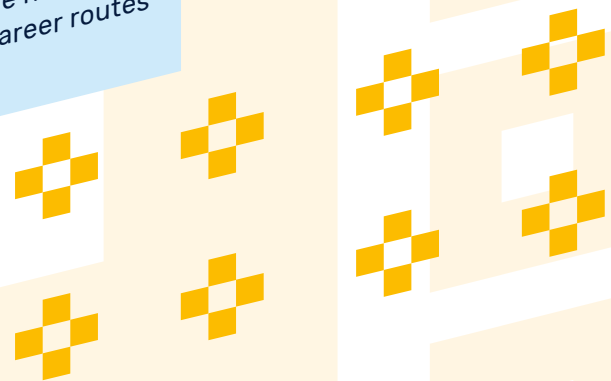
What will I study?

Everyone taking this qualification will study three mandatory units, covering the following content areas:

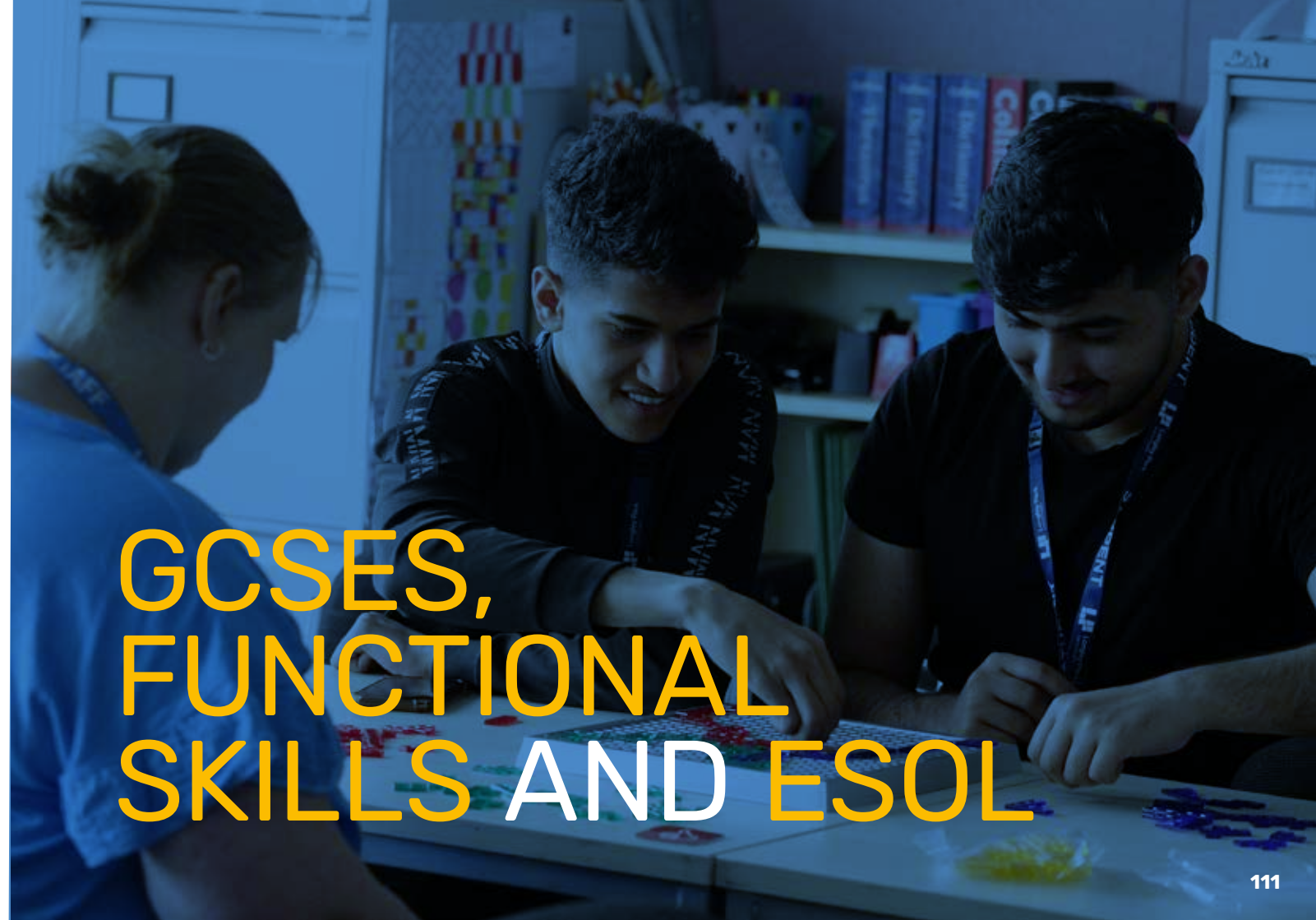
- Functional Anatomy
- Applied Sport and Exercise Psychology
- Coaching for performance and fitness.
- Specialised fitness training

We are committed to helping students develop their skills in English and Maths, as these are essential for success in other subjects.

If you do not already have a grade 4/C in English and/or Maths you will work towards these during your time at Longley Park. We will work with you to decide on the right level course for you. For some people the GCSE courses are ideal. In other cases it might be sensible to build up your existing skills before moving on to the next level. GCSE Science is also important for career routes in health and teaching.



GCSES, FUNCTIONAL SKILLS AND ESOL



ENGLISH

GCSE AND PART-TIME ESOL, FUNCTIONAL SKILLS

Entry Requirements: We will use your previous grade and an initial assessment to help us to identify the best course for you. We offer GCSE and Functional Skills courses and Entry Level, Level 1 for students who need more time to develop their skills.

We offer several courses aimed to support language and literacy development, all leading to qualifications in English. These courses include GCSE English, Functional Skills and ESOL. If English is not your first language our ESOL course will support you to become more confident in reading, writing and speaking in English. We will complete a diagnostic assessment with you to find out which course will suit you best.

What will I study?

On our English courses, we will help you improve your skills in punctuation, spelling and grammar. The GCSE English Language course involves the study of both fiction and non-fiction, texts from different cultures, creative writing and spoken language. You will also learn to analyse the different techniques used in different forms of writing. The course will also help you to improve your independent study skills. Our Functional Skills and ESOL courses are assessed across three units – Speaking and Listening, Reading and Writing. We will work with you to develop your skills in these areas and support you to progress onto the GCSE course.

How will I be assessed?

These courses are all assessed by examinations.

"The staff are very supportive and help you achieve your goal."
Mohammed – Parkwood Academy

MATHS

GCSE AND FUNCTIONAL SKILLS

Entry Requirements: We will use your previous grade and an initial assessment to help us to identify the best course for you. We offer GCSE courses and also Functional Skills for students who need more time to develop their skills.

We offer several courses leading to qualifications in Mathematics. We will work with you to identify your current level at the start of the course. You will study Maths at the right level to develop your skills.

What will I study?

You will build on the work you did at your previous school and improve your maths skills.

How will I be assessed?

These courses are all assessed by examinations.

"Getting support from the sixth form after not being able to pass my GCSE in school has encouraged me to give my best performance."
Iqra – Overseas School

SCIENCE: BIOLOGY

GCSE - 1 YEAR

Entry Requirements: You should have the equivalent of a GCSE grade 2/E or better in Single or Dual Science, Applied Science or Biology and also in Maths.

What will I study?

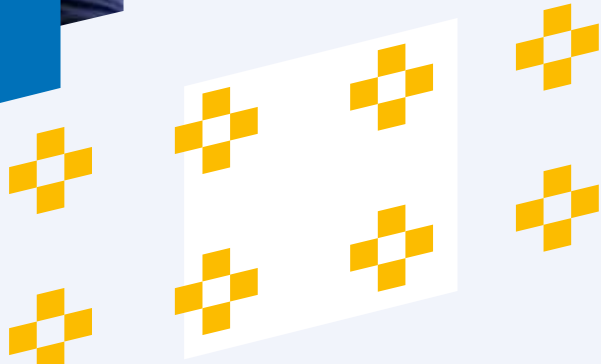
You will build on the biological science you studied at school. The course covers three main areas, understanding ourselves by looking at the structure and main system of the body, understanding our environment including plants and pollution and the world of micro-organisms including bacteria. This is a very hands-on subject and you will take part in practical work and a field trip. Your study will involve some dissection of biological material.

How will I be assessed?

Examinations.

"This course has helped me to still follow my chosen career path."

Aesha - Park Academy



LONGLEY'S STUDENT AMBASSADORS 8 TOP TIPS TO PREPARE YOU FOR LIFE AT LONGLEY PARK

1 When you attend Longley Park, you will receive an **ID badge** attached to a lanyard. Make sure to keep this safe as you will need it to enter the sixth form, to print and more.

2 Longley Park makes use of **Google Classroom** and **Microsoft Teams** for sharing homework and other resources so try to learn how to use it and get the classroom codes from your teachers as early as possible.

3 Longley Park also uses **Microsoft Outlook** for emails. This will be one of the main ways for you to communicate with your teachers and vice versa. Therefore get to grips with it and check it regularly.

4 It is important to keep in mind **Longley Park opening hours**, 8am to 5pm Monday to Thursday and 8am to 4.30pm on Friday.

5 Each of your subjects should run **workshops** – extra help sessions with your teachers – that you should strive to attend like normal classes. This will enable you to work through anything you're not confident with, with your teacher, at your own pace.

6 Remember to regularly check your **online timetable** (in table view) because your timetable can be changed occasionally throughout the academic year.

7 If you feel anxious, overwhelmed etc on your first day or afterwards we have a **wellbeing room** where you can go to receive help from qualified councillors or just calm yourself down.

8 Longley Park prides itself on the **support** it offers. The staff encourage independence from the get-go, so from the beginning of your time at Longley Park, voice your future ambitions, interests etc. with your teachers and tutors.



WE ARE LONGLEY PARK



Longley Park

SIXTH FORM

Horninglow Road, Sheffield S5 6SG

Tel: 0114 262 5757

longleypark.ac.uk



BRIGANTIA
LEARNING TRUST

Creating excellence together