

---

Creating Excellence Together,  
through a culture of care

# SUPPORTING CHILDREN WITH MEDICAL CONDITIONS



**BRIGANTIA**  
LEARNING TRUST

Creating Excellence Together,  
through a culture of care

---

## Document Control

<b>Title:</b>	Supporting Children with Medical Conditions
<b>Policy Lead:</b>	Director of Academies
<b>Category:</b>	Estates & FM
<b>Date Approved:</b>	9 <sup>th</sup> July 2025
<b>Approved by:</b>	Trustees
<b>Review Date:</b>	01/07/2027
<b>Review Period:</b>	2 years
<b>Status:</b>	Statutory
<b>Website:</b>	Yes
<b>Annual Agreement:</b>	No

## Review

Date:	Version:	Author:	Revisions:
22/08/2022	1	SOO	Updated Proformas - IHCP
29/06/2023	1	SOO	No Change
17/06/2025	2	SCOO	Added the following sections: Section 6. Pupils with health needs who cannot attend school Section 10.7 Added detail on administering medications Section 11 – Information on the SharePoint Medical site Annex E – Administering medications Flow Charts



## Contents

1. Introduction .....	4
2. Definition of “medical condition” .....	4
3. Policy implementation .....	4
4. Notification that a pupil has a medical condition .....	5
5. Procedure following notification that a pupil has a medical condition .....	5
6. Pupils with health needs who cannot attend school .....	6
7. Individual Healthcare Plans (IHCP) – see Annex A .....	6
8. Reviewing Individual Healthcare Plans (IHCP) .....	8
9. Staff training .....	8
10. Administering medication .....	8
11. Trust SharePoint Site - Medical .....	10
12. Unacceptable practice .....	10
13. Complaints .....	10
Annex A - Process for developing individual healthcare plans .....	11
Annex B – Individual Healthcare Plan .....	12
Annex C – Parental agreement for setting to administer medicine .....	15
Annex D – Record of medicine administered to an individual child .....	16
Annex E - Administering medications .....	18



## 1. Introduction

- 1.1 As a proprietor of one or more academies, Brigantia Learning Trust has a legal duty to make arrangements for supporting pupils at the academy with medical conditions. The board of Brigantia Learning Trust has delegated this responsibility to the academy.
- 1.2 The academy has adopted this policy to set out the arrangements it has put in place for its pupils with medical conditions.

### Overriding principles

- 1.3 Children and young people with medical conditions are entitled to a full education. The academy is committed to ensuring that pupils with medical conditions are properly supported in school so that they can play a full and active role in school life, remain healthy and achieve their academic potential. We want all pupils, as far as possible, to access and enjoy the same opportunities at school as any other child. This will include actively supporting pupils with medical conditions to participate in school trips/visits and or in sporting activities.

## 2. Definition of “medical condition”

- 2.1 For the purposes of this policy, a medical condition is any illness or disability which a pupil has. It can be:
  - physical or mental
  - a single episode or recurrent
  - short-term or long-term
  - relatively straightforward (e.g. the pupil can manage the condition themselves without support or monitoring) or complex (requiring on-going support, medicines or care whilst at school to help the pupil manage their condition and keep them well)
  - involving medication or medical equipment
  - affecting participation in school activities or limiting access to education

Medical conditions may change over time, in ways that cannot always be predicted.

## 3. Policy implementation

- 3.1 The person with overall responsibility for the successful administering and implementation of this policy is the Principal.

The Principal as overall responsibility for ensuring:

- that sufficient staff are suitably trained to meet the known medical conditions of pupils at the academy
- all relevant staff are made aware of the pupil’s medical condition and supply teachers are properly briefed
- cover arrangements are in place to cover staff absences/turnover to ensure that someone is always available and on site



- risk assessments for school visits, holidays and other school activities outside of the normal timetable are completed
- individual healthcare plans are prepared where appropriate and monitored

## **4. Notification that a pupil has a medical condition**

- 4.1 Ordinarily, the pupil's parent/carer will notify the academy that their child has a medical condition. Parents/carers should ideally provide this information in writing addressed to the Principal. However, they may sometimes pass this information on to a class teacher or another member of staff. Any staff member receiving notification that a pupil has a medical condition should notify the Principal as soon as practicable.
- 4.2 A pupil themselves may disclose that they have a medical condition. The staff member to whom the disclosure is made should notify the Principal (or designated person) as soon as practicable.
- 4.3 Notification may also be received direct from the pupil's healthcare provider or from a school from which a child may be joining the academy. The academy may also instigate the procedure themselves where the pupil is returning to the academy after a long-term absence.

## **5. Procedure following notification that a pupil has a medical condition**

- 5.1 Except in exceptional circumstances where the pupil does not wish their parent/carer to know about their medical condition, the pupil's parents/carers will be contacted by the Principal, or someone designated by them, as soon as practicable to discuss what, if any, arrangements need to be put into place to support the pupil. Every effort will be made to encourage the child to involve their parents while respecting their right to confidentiality.
- 5.2 Unless the medical condition is short-term and relatively straightforward (e.g. the pupil can manage the condition themselves without any support or monitoring), a meeting will normally be held to:
- discuss the pupil's medical support needs
  - identify a member of school staff who will provide support to the pupil where appropriate
  - determine whether an individual healthcare plan (IHCP) is needed and, if so, what information it should contain
- 5.3 Where possible, the pupil will be enabled and encouraged to attend the meeting and speak on his/her own behalf, taking into account the pupil's age and understanding. Where this is not appropriate, the pupil will be given the opportunity to feed in his/ her views by other means, such as setting their views out in writing.
- 5.4 The healthcare professional(s) with responsibility for the pupil may be invited to the meeting or be asked to prepare written evidence about the pupil's medical condition for consideration. Where possible, their advice will be sought on the need for, and the contents of, an IHCP.



- 5.5 In cases where a pupil's medical condition is unclear, or where there is a difference of opinion, the Principal (or designated person) will exercise his/ her professional judgement based on the available evidence to determine whether an IHCP is needed and/or what support to provide.
- 5.6 For children joining the academy at the start of the school year any support arrangements will be made in time for the start of the school term where possible. In other cases, such as a new diagnosis or a child moving to the academy mid-term, every effort will be made to ensure that any support arrangements are put in place within two weeks.
- 5.7 In line with our safeguarding duties, the academy will ensure that pupil's health is not put at unnecessary risk from, for example, infectious diseases. The academy will not accept a pupil into the school at times where it will be detrimental to the health of that child or others.

## 6. Pupils with health needs who cannot attend school

- 6.1 Where a pupil cannot attend school because of health needs, unless it is evident at the outset that the pupil will be absent for 15 or more days, the academy will initially follow the usual process around attendance and mark the pupil as ill for the purposes of the register.
- 6.2 The academy will provide support to pupils who are absent from school because of illness for a period shorter than 15 days. This may include providing pupils with relevant information, curriculum materials and resources.
- 6.3 In accordance with the Department for Education's statutory guidance, as soon as it is clear that a pupil will be away from school for 15 days or more (either consecutive or over the course of a school year) because of their health needs, the local authority should
  - (i) be ready to take responsibility for arranging suitable full-time education for that pupil; and
  - (ii) arrange for this provision to be in place as soon as it is clear that the absence will last for more than 15 days.

The academy will inform and work collaboratively with the local authority to support these responsibilities. Whilst receiving education elsewhere for which the LA is responsible the academy will continue to review in relation to safeguarding and educational provision.

- 6.4 The academy will work collaboratively with the local authority, relevant medical professionals, relevant education provider, parents and, where appropriate, the pupil, to identify and meet the pupil's educational needs throughout the period of absence and to remain in touch with the pupil throughout.
- 6.5 When a pupil is considered well enough to return to full time education at the academy, the Principal or someone designated by them will develop a reintegration plan in partnership with the appropriate individuals/organisations.

## 7. Individual Healthcare Plans (IHCP) – see Annex A

- 7.1 Where it is decided that an IHCP should be developed for the pupil, this shall be developed in partnership between the academy, the pupil's parents/carers, the pupil and the relevant



healthcare professional(s) who can best advise on the particular needs of the pupil. This may include the school nursing service. The local authority will also be asked to contribute where the pupil accesses home-to-school transport to ensure that the authority's own transport healthcare plans are consistent with the IHCP.

- 7.2 The aim of the IHCP is to capture the steps which the academy needs to take to help the pupil manage their condition and overcome any potential barriers to getting the most from their education. It will be developed with the pupil's best interests in mind. In preparing the IHCP the academy will need to assess and manage the risk to the pupil's education, health and social well-being and minimise disruption.

IHCP's may include:

- details of the medical condition, its triggers, signs, symptoms and treatments
- the pupil's resulting needs, including medication (dose, side-effects and storage) and other treatments, time, facilities, equipment, testing, access to food and drink where this is used to manage their condition, dietary requirements and environmental issues e.g. crowded corridors or travel time between lessons
- specific support for the pupil's educational, social and emotional needs – for example, how absences will be managed, requirements for extra time to complete exams, use of rest periods or additional support in catching up with lessons or counselling sessions
- the level of support needed (some children will be able to take responsibility for their own health needs), including in emergencies; if a pupil is self-managing their medication, this will be clearly stated with appropriate arrangements for monitoring
- who will provide this support, their training needs, expectations of their role and confirmation of proficiency to provide support for the pupil's medical condition from a healthcare professional and cover arrangements for when they are unavailable
- who in the academy needs to be aware of the pupil's condition and the support required
- arrangements for written permission from parents/carers for medication to be administered by a member of staff, or self-administered by the pupil during school hours
- separate arrangements or procedures required for school trips or other school activities outside of the normal school timetable that will ensure the pupil can participate, e.g. risk assessments
- where confidentiality issues are raised by the parent/pupil, the designated individuals to be entrusted with information about the pupil's condition
- what to do in an emergency, including whom to contact, and contingency arrangements; some children may have an emergency healthcare plan prepared by their lead clinician that could be used to inform development of their IHCP

- 7.3 The IHCP will also clearly define what constitutes an emergency and explain what to do, including ensuring that all relevant staff are aware of emergency symptoms and procedures. Other pupils in the academy should know what to do in general terms, such as informing a teacher immediately if they think help is needed. If a pupil (regardless of whether they have an IHCP) needs to be taken to hospital, staff will stay with the pupil until the parent/carer arrives, or accompany a pupil taken to hospital by ambulance.



- 7.4 Except in exceptional circumstances, or where the healthcare provider deems that they are better placed to do so, the academy will take the lead in writing the plan and ensuring that it is finalised and implemented.
- 7.5 Where a pupil is returning to the academy following a period of hospital education or alternative provision (including home tuition), the academy will work with the local authority and education provider to ensure that the IHCP identifies the support the pupil will need to reintegrate effectively.
- 7.6 Where the pupil has a special educational need identified in an Education Health and Care Plan (EHCP), the IHCP will be linked to or become part of that EHCP.

## 8. Reviewing Individual Healthcare Plans (IHCP)

- 8.1 Every IHCP shall be reviewed at least annually. The Principal (or someone designated by them) shall, as soon as practicable, contact the pupil's parents/carers and the relevant healthcare provider to ascertain whether the current IHCP is still needed or needs to be changed. If the academy receives notification that the pupil's needs have changed, a review of the IHCP will be undertaken as soon as practicable.
- 8.2 Where practicable, staff who provide support to the pupil with the medical condition shall be included in any meetings where the pupil's condition is discussed.

## 9. Staff training

- 9.1 The Principal is responsible for:
- ensuring that all staff (including new staff) are aware of this policy for supporting pupils with medical conditions and understand their role in its implementation
  - working with relevant healthcare professionals and other external agencies to identify staff training requirements and commission training required
  - ensuring that there are sufficient numbers of trained staff available to implement the policy and deliver against all IHCPs, including in contingency and emergency situations
  - In addition, all members of school staff will know what to do and respond accordingly when they become aware that a pupil with a medical condition needs help.
- 9.2 The academy has in place appropriate levels of insurance regarding staff providing support to pupils with medical conditions, including the administration of medication. Copies of the academy's insurance policies can be made accessible to staff as required.

## 10. Administering medication

- 10.1 Written permission from parents/carers is required for prescription or non-prescription medication to be administered by a member of staff or self-administered by the pupil during school hours. Medicines will only be administered at the academy when it would be detrimental to a pupil's health or school attendance not to do so. Where clinically possible, medicines should be administered in dose frequencies which enable them to be taken outside of school hours.



- 10.2 If a pupil requires medicines or medical devices, such as asthma inhalers, blood glucose testing meters or adrenaline pens, in school it is vital that the parent/carers advise the academy accordingly, so that the process for storing and administering medication can be properly discussed.
- 10.3 The academy will only accept medicines that are in-date, labelled, provided in the original container and include instructions for administration, dosage and storage. The exception to this is insulin which must still be in date but will generally be available inside an insulin pen or a pump, rather than its original container.
- 10.4 The medication must be accompanied by a complete written instruction form signed by the pupil's parent/carers. The academy will not make changes to dosages labelled on the medicine or device on parental instructions.
- 10.5 The pupil and staff supporting the pupil with their medical condition should know where their medicines are at all times and be able to access them when needed. The most appropriate method for storing medicines and medical devices will be discussed with the pupil's parent/carers but the academy will ultimately decide the approach to be taken.
- 10.6 Wherever possible, pupils will be allowed to carry their own medicines and relevant devices or be able to access their medicines for self-medication quickly and easily. Where it is appropriate to do so, pupils will be encouraged to administer their own medication, under staff supervision if necessary. Staff administering medication should do so in accordance with the labelled instructions. Staff who volunteer to assist in the administration of medication will receive appropriate training and guidance before administering medication.
- 10.7 The academy will keep a record, on SharePoint Medical Site, of all medicines administered to individual pupils, stating what, how and how much was administered, when and by whom. Any side effects of the medication will be noted. Administration of Over-the-Counter(OTC) medications will be recorded on Arbor as a medical event. Any telephone communications, giving consent to administer OTC medications, will also be recorded in the Arbor phone logs for the student.

Annex E outlines the process for administering and recording of all medications.

- 10.8 If a pupil refuses to take their medication, staff will not force them to do so, and will inform the parent/carers of the refusal as a matter of urgency. If a refusal to take medicines results in an emergency, the school's emergency procedures will be followed.
- 10.9 It is the parent/carers' responsibility to renew the medication when supplies are running low and to ensure that the medication supplied is within its expiry date.
- 10.10 It is the responsibility of parents/carers to notify the academy in writing if the pupil's need for medication has ceased. When no longer required, medicines will be returned to the parent/carers to arrange for safe disposal. Sharps boxes should always be used for the disposal of needles.



## 11. Trust SharePoint Site - Medical

- 11.1 The Medical SharePoint site provides staff with information on this policy and provides up to date news. It also provides copies of the medical proformas used. It can be accessed from the Trust homepage or Health and Safety area.

[Medical - Home](#)

## 12. Unacceptable practice

- 12.1 Although the Principal and other school staff should use their discretion and judge each case on its merits with reference to the pupil's IHCP, it will not generally be acceptable practice to:
- prevent children from easily accessing their inhalers and medication and administering their medication when and where necessary
  - assume that every pupil with the same condition requires the same treatment
  - ignore the views of the pupil or their parents/carers or ignore medical evidence or opinion (although this may be challenged)
  - send children with medical conditions home frequently or prevent them from staying for normal school activities, including lunch, unless this is specified in their IHCP
  - if the pupil becomes ill, send them to the school office or medical room unaccompanied or with someone unsuitable
  - penalise children for their attendance record if their absences are related to their medical condition e.g. hospital appointments
  - prevent pupils from drinking, eating or taking toilet or other breaks whenever they need to in order to manage their medical condition effectively
  - require parents/carers, or otherwise make them feel obliged, to attend school to administer medication or provide medical support to their child, including with toileting issues; no parent/carer should have to give up working because the academy is failing to support their child's medical needs; or
  - prevent children from participating, or create unnecessary barriers to children participating in any aspect of school life, including school trips, e.g. by requiring parents/carers to accompany the child

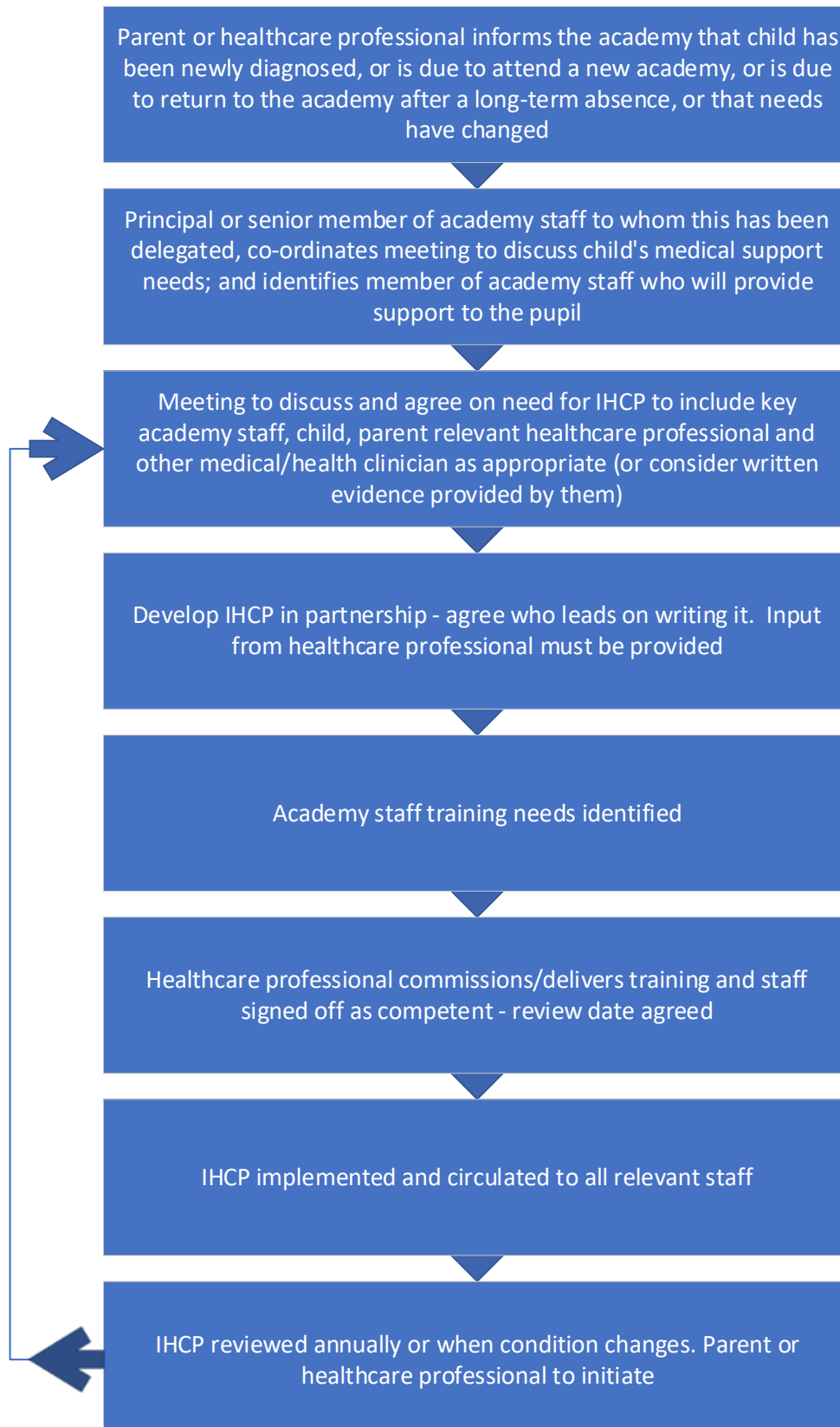
## 13. Complaints

- 13.1 Complaints regarding this policy or the support provided to pupils with medical conditions should be raised under the academy's usual complaints procedure.



## Annex A - Process for developing individual healthcare plans

(Supporting pupils at school with medical conditions)



## Annex B – Individual Healthcare Plan

This form is to be typed and not filled in by hand.

\*Add additional lines as required

Name of school/setting

Child's name

Group/class/form

Date of birth

Child's address

Medical diagnosis or condition

Date

Review date

### Family Contact Information

Name

Phone no. (work)

(home)

(mobile)

Name

Relationship to child

Phone no. (work)

(home)

(mobile)

### Clinic/Hospital Contact

Name

Phone no.

**G.P.**

Name

Phone no.



**Who is responsible for providing support in school:**

1	
2	
3	

**Medical Needs**

Describe medical needs and give details of child's symptoms, triggers, signs, treatments, facilities, equipment or devices, environmental issues etc

--

Name of medication, dose, method of administration, when to be taken, side effects, contra-indications, administered by/self-administered with/without supervision.

Medication Dose Method of administration Side effects Administered by self (Yes/ No) Supervised (Yes/ No)
Medication Dose Method of administration Side effects Administered by self (Yes/ No) Supervised (Yes/ No)

**Daily care requirements**

Diet
Timetable
Activities - i.e. Before or after P.E.
Other requirements
Special educational needs (Please give details)



Specific support for the pupil's educational, social and emotional needs

--

Arrangements for school visits/trips etc

--

**Other information**

--

Describe what constitutes an emergency, and the action to take if this occurs

--

Who is responsible in an emergency (*state if different for off-site activities*)

1.	
2.	

Plan developed with

1	
2	
3	
4	

Staff training needed/undertaken – who, what, when

Name	Training Req.	Date Complete



## Annex C – Parental agreement for setting to administer medicine

The school/setting will not give your child medicine unless you complete and sign this form, and the school or setting has a policy that the staff can administer medicine.

Date for review to be initiated by	
Name of school/setting	
Name of child	
Date of birth	
Group/class/form	
Medical condition or illness	

### Medicine

Name/type of medicine (as described on the container)	
Expiry date	
Dosage and method	
Timing	
Special precautions/other instructions	
Are there any side effects that the school/setting needs to know about?	
Self-administration – y/n	
Procedures to take in an emergency	

**NB: Medicines must be in the original container as dispensed by the pharmacy**

### Contact Details

Name	
Daytime telephone no.	
Relationship to child	
Address	
I understand that I must deliver the medicine personally to	[agreed member of staff]

The above information is, to the best of my knowledge, accurate at the time of writing and I give consent to school/setting staff administering medicine in accordance with the school/setting policy. I will inform the school/setting immediately, in writing, if there is any change in dosage or frequency of the medication or if the medicine is stopped.

Signature(s) \_\_\_\_\_

Date \_\_\_\_\_



## Annex D – Record of medicine administered to an individual child

Name of school/setting	
Name of child	
Date medicine provided by parent	
Group/class/form	
Quantity received	
Name and strength of medicine	
Expiry date	
Quantity returned	
Dose and frequency of medicine	

Staff signature \_\_\_\_\_

Signature of parent \_\_\_\_\_

Date			
Time given			
Dose given			
Name of member of staff			
Staff initials			

Date			
Time given			
Dose given			
Name of member of staff			
Staff initials			



Date  
Time given  
Dose given  
Name of member of staff  
Staff initials


Date  
Time given  
Dose given  
Name of member of staff  
Staff initials


Date  
Time given  
Dose given  
Name of member of staff  
Staff initials


Date  
Time given  
Dose given  
Name of member of staff  
Staff initials




## Annex E - Administering medications

